

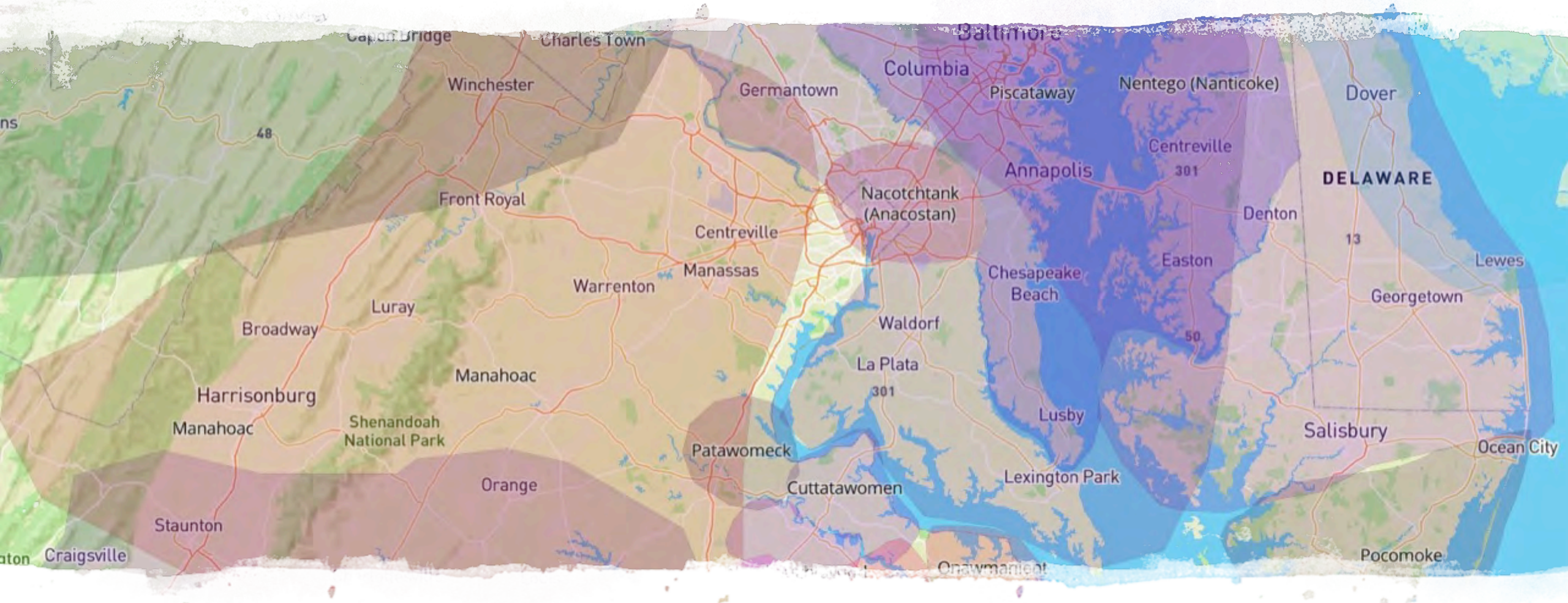
Gaithersburg Sustainability Summit

for Homeowners & Civic Associations

Thursday, March 24, 2022
Via Zoom



ENVIRONMENTAL
FINANCE CENTER



Gaithersburg's Native Land

Agenda

6:30 pm: Welcome from the City of Gaithersburg

6:40 pm: Sustainable Maryland Residential Action Framework

6:55 pm: A Green Team in Practice

7:25 pm: Stretch Break

7:30 pm: Building a Strong Network of Sustainability Champions

7:50 pm: Supporting Sustainability through Community-Driven Stormwater Action

8:10 pm: Expanding Green Teams in Gaithersburg

8:25 pm: Wrap Up/Next Steps





Gaithersburg

A CHARACTER COUNTS! CITY

City Hall

31 South Summit Avenue
Griffith Park

City of
Gaithersburg

Welcome!

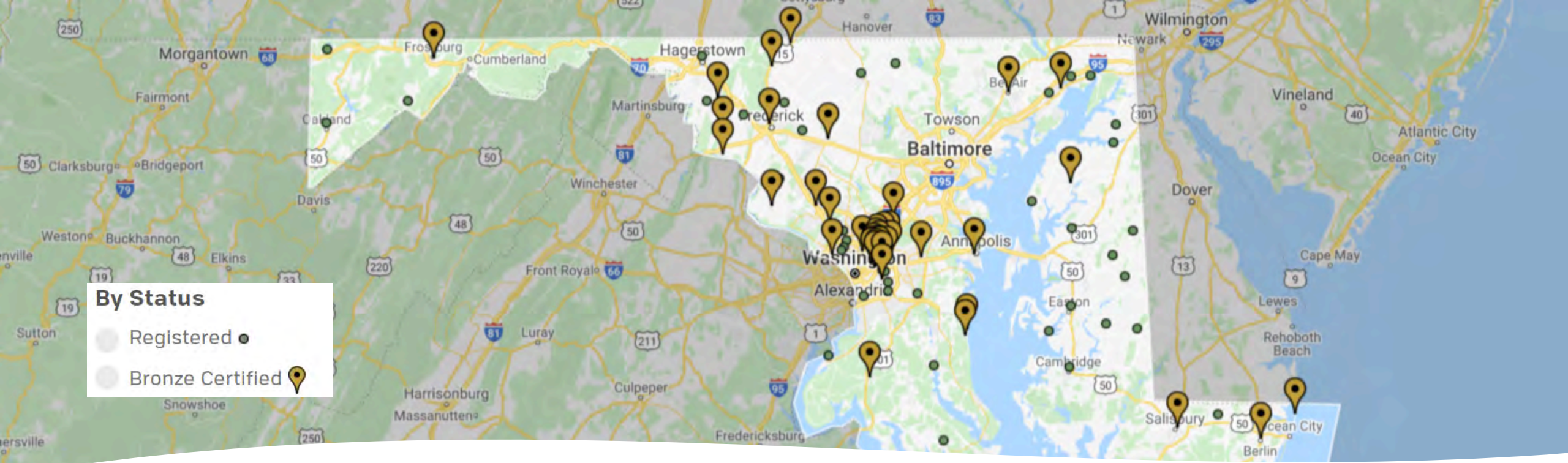
Sustainable Maryland's Residential Action Framework

ENGAGING MARYLAND'S
HOMEOWNERS AND CIVIC ASSOCIATIONS



ENVIRONMENTAL
FINANCE CENTER





- A **Free** and **Voluntary** program for communities that want to go green and save green
- We help communities:
 - Choose a direction for their sustainability efforts
 - Improve access to resources
 - Share successes with other communities
 - Track progress towards and gain recognition for achieving goals



SM Residential Action Framework

TAKING STEPS TOWARDS A MORE SUSTAINABLE FUTURE



1. Establish a Green Team

Present to the HOA

- You can have a formally adopted Green Team or an informal volunteer group

Build On Local Assets

- Engaged community members with their personal passion and/or professional expertise

Recruit Members

- Partnerships with local businesses, schools, congregations, non-profits, public health, arts

Collaborate with other jurisdictions

- Partner with local municipalities, and other neighboring communities



2. Review the SM Residential Action Menu

	A	B	C	D
16		Stormwater Management	Type	Resources
17	SM-1	Promote Stormwater Management Best Practices	Outreach	<ul style="list-style-type: none"> - Stormwater 101 Gaithersburg https://bit.ly/3gHCo14 - Stormwater Pollution Prevention Gaithersburg https://bit.ly/3Bft51z - Types of Stormwater Management Facilities Montgomery County https://bit.ly/3JIHNqF - Rainscapes Reward Program Gaithersburg https://bit.ly/3Hp6Okp
18	SM-2	Promote Stormwater Rebate Program Education and Outreach	Outreach	<ul style="list-style-type: none"> - Rainscapes Reward Program Gaithersburg https://bit.ly/3Hp6Okp
19	SM-3	Schedule Regular Community Cleanup Days	Event	<ul style="list-style-type: none"> - How to Organize & Lead Your Clean Up Alice Ferguson Foundation https://bit.ly/3HkJiEY - Community Clean Up Event Support Gaithersburg https://bit.ly/3rIWMus - City Cleanup Liability Release Form https://bit.ly/3rjhZ8m - Outreach and Restoration grant Chesapeake Bay Trust https://bit.ly/3HwaZek - Community Engagement Mini-grant Chesapeake Bay Trust https://bit.ly/3ojLvJe
20	SM-4	Storm Drain Stenciling	Event	<ul style="list-style-type: none"> - Storm Drain Stenciling Chesapeake Bay Foundation https://bit.ly/3J23WKJ - Storm Drain Art Project Gaithersburg https://bit.ly/3JcTtMD - Keep Montgomery County Beautiful Storm Drain Marking Program Montgomery County https://bit.ly/3ohqBKK - Storm Drain Stenciling Action Project MD Department of Natural Resources https://bit.ly/3okXMx9 - Outreach and Restoration grant Chesapeake Bay Trust https://bit.ly/3HwaZek - Community Engagement Mini-grant Chesapeake Bay Trust https://bit.ly/3ojLvJe
21	SM-5	Adopt-A-Stream	Project	<ul style="list-style-type: none"> - Adopt-a-Stream Alice Ferguson Foundation https://bit.ly/3ukdc8S - Adopt-a-Stream Team Leader Montgomery County Volunteer Center https://bit.ly/3L12MRo - Outreach and Restoration grant Chesapeake Bay Trust https://bit.ly/3HwaZek - Community Engagement Mini-grant Chesapeake Bay Trust https://bit.ly/3ojLvJe - Environmental Volunteer Opportunities Gaithersburg https://bit.ly/3rIWMus - City Cleanup Liability Form Gaithersburg https://bit.ly/3rjhZ8m
				<ul style="list-style-type: none"> - Rainscapes Reward Program Gaithersburg https://bit.ly/3Hp6Okp

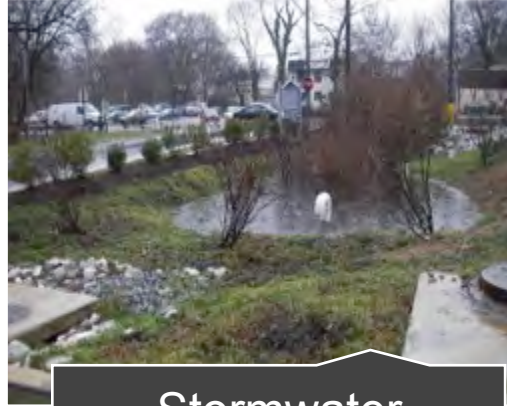
<https://sustainablemaryland.com/resources/homeowners-associations>

2. Review the SM Residential Action Menu

ACTION CATEGORIES



Community Action



Stormwater Management



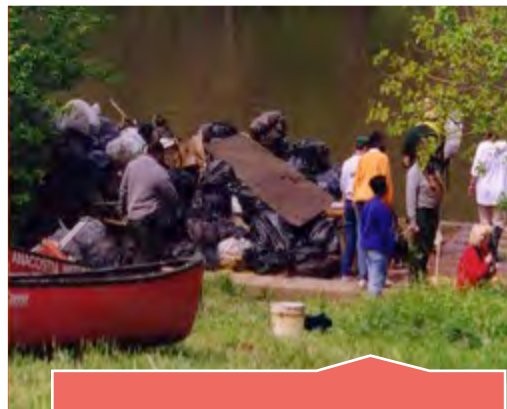
Eco-Friendly Landscaping



Enhancing Wildlife Habitat



Health & Well-Being



Waste Reduction



Clean & Renewable Energy



Transportation

Community Action

Research, Planning, & Policies

- Conduct a Community Survey
- Develop a Green Team Action Plan

Outreach & Promotion

- Advertise Green Team
- Promote MD Green Schools

Projects & Programs

- Establish a Sustainability Resources Center
- Host Cultural Events
- Commit to Greening Events
- Commission a Public Art Installation

Stormwater Management

Research, Planning, & Policies

- Conduct a Flood Risk Assessment
- Develop a Stormwater Management Plan
- Adopt a Salt Reduction Plan
- Pass a Pet Waste Policy

Outreach & Promotion

- Promote Stormwater Management Best Practices
- Promote Water Conservation Practices
- Conduct Pet Waste Management Outreach
- Distribute Incentive Program Materials

Projects & Programs

- Install Pet Waste Stations
- Adopt-A-Stream
- Storm Drain Stenciling
- Host a Stream/Community Cleanup
- Install and Maintain Green Infrastructure
- Host a Rain Barrel Workshops

Eco-friendly Landscaping

Research, Planning, & Policies

- Conduct a Landscape Survey
- Create a Tree Inventory and a Tree Canopy Plan
- Pass a Native Plant Landscaping Policy
- Establish No-mow Zones
- Commit to Water-Efficient Landscaping

Outreach & Promotion

- Promote Conservation Landscaping Practices
- Educate Residents on the benefits of Organic Lawn Care

Projects & Programs

- Plant Trees
- Adopt Integrated Pest Management or Conservation Landscaping Practices

Enhancing Wildlife Habitat

Research, Planning, & Policies

- Complete an Ecological Survey
- Develop a Biodiversity Action Plan
- Pass a Light Pollution Reduction/
Dark Sky Policy

Outreach & Promotion

- Promote Water Conservation
Practices
- Promote Annual Bio Blitz

Projects & Programs

- Install Pollinator Gardens
- Install Dark Sky lights
- Host a Bat Box or Insect Hotel
Workshop

Health & Well-being

Research, Planning, & Policies

- Permit Front Yard Gardening
- Permit Chicken or Beekeeping

Outreach & Promotion

- Promote Local Farmers Market
- Distribute Educational Material on the benefits of an Active-Lifestyle
- Encourage consumption of fresh fruit and vegetables in community newsletters

Projects & Programs

- Install a Community Garden
- Install a Food Forest
- Conduct Healthy Living Workshops

Waste Reduction

Research, Planning, & Policies

- Adopt a Green Purchasing Policy for Goods and Services
- Include Sustainability Language in Waste Management Contracts
- Review Current HOA Purchasing Practices and Evaluate Opportunities for Reducing Consumption

Outreach & Promotion

- Develop a Litter Outreach Campaign
- Promote Backyard Composting
- Educate Residents on Litter Reduction Techniques in community newsletter

Projects & Programs

- Host a community-wide electronics recycling event
- Offer and promote Community-wide Composting
- Host Green Product Education Workshops
- Eliminate the use of disposables at community events
- Start a Buy-Nothing Group

Clean & Renewable Energy

Research, Planning, & Policies

- Conduct a Community Carbon Footprint
- Establish Greenhouse Gas Emissions Targets
- Consider Time of Sale Energy Disclosure

Outreach & Promotion

- Promote Residential Energy Audit Programs
- Promote Community Solar or Solar Co-ops
- Promote Energy Savings Practices
- Promote Water Efficiency Practices
- Promote On-bill Financing for Energy Efficiency

Projects & Programs

- Conduct an Energy Audit of HOA buildings
- Install On-site Renewable Energy
- Install energy efficient Appliances and Lighting
- Upgrade to LED Streetlights
- Install a Solar or Green Roof on HOA buildings



Transportation

Research, Planning, & Policies

- Transportation Assessment
- Parking Assessment
- Walking Audit

Outreach & Promotion

- Promote Bike to Workday
- Promote the benefits of electric and hybrid vehicles
- Promote the Benefits of Reduced Automobile Dependence

Projects & Programs

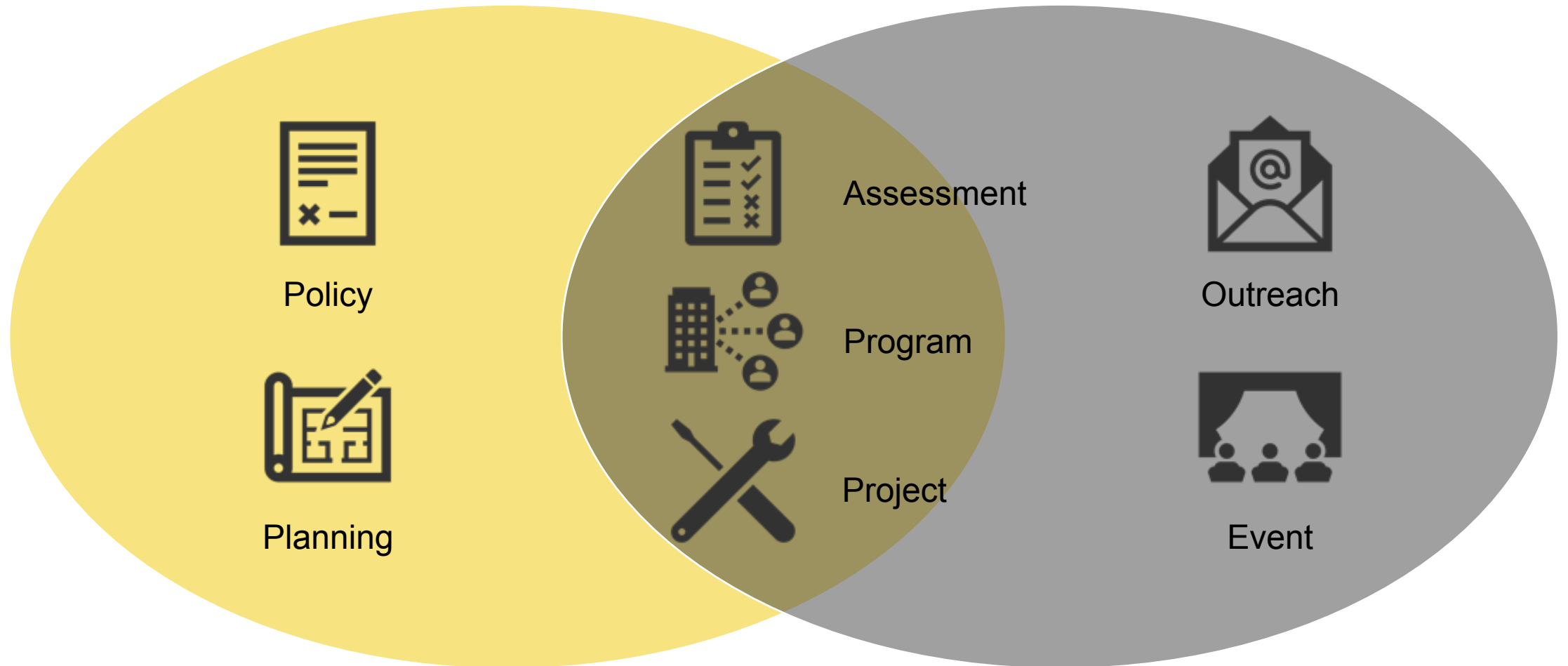
- Install Electric Vehicle Charging Stations
- Install Traffic Calming Measures
- Safe Routes to School
- Install Bicycle Parking/Storage

2. Review the SM Residential Action Menu

DIFFERENT TYPES OF ACTIONS MAY REQUIRE DIFFERENT LEADS

- Board Leadership

- Green Team Leadership



3. Explore Potential Community Actions

Questions to keep in mind

1. What are our community's priorities and goals?
2. Are there any known issues?
3. What actions have already been initiated/ completed?
4. Where are there areas of opportunity?
5. Who are the members of the community?
6. What do we control?
7. What local assets and resources can we build on?

Community Assets



Community
Members



Property



Policies



Outreach &
Communication



Services &
Procurement

4. Develop a Green Team Action Plan



4. Develop a Green Team Action Plan

SAMPLE ACTION PLANS

	A	B	C	D	E	F	G	H
1	Action Category	Green Team Actions	Year	Lead (s)	Est. Cost	Goal and Progress Notes	Potential Partners	Potential Resources
2	Community Action	Establish/Grow a Green Team	0			Spring 2022. Community participants agreed that a Green Team would be a useful addition to the community, as a sub-committee of the Board. They agreed to pass a formal designation of a Green Team, and will use the Diamond Farms resolution as a template.		<ul style="list-style-type: none"> - SM Framework presentation Sustainable Maryland - Outreach and Restoration grant Chesapeake Bay Trust https://bit.ly/3HwaZek - Community Engagement Mini-grant Chesapeake Bay Trust https://bit.ly/3ojLvJe
3	Community Action	Develop a Green Team Action Plan	0			Spring 2022. SM will provide a draft action plan based on community meetings.		<ul style="list-style-type: none"> - SM Green Team Action Plan Template Sustainable Maryland - Outreach and Restoration grant Chesapeake Bay Trust https://bit.ly/3HwaZek - Community Engagement Mini-grant (for executing water-related projects) Chesapeake Bay Trust https://bit.ly/3ojLvJe - Advocacy & Stewardship Handbook Audubon Naturalist Society https://bit.ly/3sfWzZ0 - Homeowner's Guide to Sustainability Angi https://bit.ly/3HZadqq - Environment Community Associations https://bit.ly/35Izug8
4	Community Action	Conduct Sustainability Education and Outreach	0			General ongoing outreach as needed.		<ul style="list-style-type: none"> - HOA Covenants for Sustainability Urban Land Magazine https://bit.ly/3HVGej7
5	Community Action	Install A Little Free Library	0			0		<ul style="list-style-type: none"> - Little Free Library https://bit.ly/3wqGeo7
	Community	Partner with nonprofits or higher ed institutions to help build capacity and	0			Explore future opportunities to partner with UMD, Muddy Branch Alliance, CBT, etc. to		<ul style="list-style-type: none"> - Community Engagement and Restoration Mentorship

4. Develop a Green Team Action Plan

SAMPLE ACTION PLANS

Summit Hall Reserve HOA GREEN TEAM ACTION PLAN 2022-2025

In 2021 Summit Hall Reserve HOA worked with the Environmental Finance Center (EFC) at the University of Maryland and its Sustainable Maryland (SM) program to adopt the SM Residential Action Framework. Sponsored by the Chesapeake Bay Trust with support from the City of Gaithersburg, this framework guides homeowners' and civic associations through a process that increases their awareness of natural resources and watershed protection issues, educates their residents on the importance of community-based sustainability efforts, and encourages action.

Over the course of a year, the EFC project team led community members through a process of identifying and prioritizing shared areas of need, strategies for enhancing collective action, and opportunities for developing projects culminating in a Green Team Action Plan.

The Summit Hall Reserve Green Team Action plan is a living document that establishes priority actions for the next three years and serves as a tool for Green Team members to stay organized and track progress over time.

HIGHLIGHTS

ESTABLISHED


LOCATION
Cobbler Place and Fairbanks Drive, Gaithersburg, MD





POPULATION
82 households
~175 residents

GREEN TEAM MEMBERS
Quinn Odorizzi, Property Manager
Jon Sundy, Board member
Jon Griffin, Board member

GREEN TEAM CONTACT
Quinn Odorizzi, Property Manager
QOdorizzi@emc-management.com

PARTNERS
Sustainable Maryland
Environmental Finance Center
City of Gaithersburg
Chesapeake Bay Trust





COMMUNITY ACTION

Establish a Green Team

Action Leads:
Target Year: Spring 2022
Estimated Cost and Resource Needs:
Potential Partners:
Potential Resources:

- SM Framework presentation | Sustainable Maryland
- Outreach and Restoration grant | Chesapeake Bay Trust | <https://bit.ly/3HwaZek>
- Community Engagement Mini-grant | Chesapeake Bay Trust | <https://bit.ly/3oJLvJe>

Progress and Implementation Notes:
Community participants agreed that a Green Team would be a useful addition to the community, as a sub-committee of the Board. They agreed to pass a formal designation of a Green Team, and will use the Diamond Farms resolution as a template.

Develop a Green Team Action Plan

Action Leads:
Target Year: Spring 2022
Estimated Cost and Resource Needs:
Potential Partners:
Potential Resources:

- SM Green Team Action Plan Template | Sustainable Maryland |
- Outreach and Restoration grant | Chesapeake Bay Trust | <https://bit.ly/3HwaZek>
- Community Engagement Mini-grant (for executing water-related projects) | Chesapeake Bay Trust | <https://bit.ly/3oJLvJe>
- Advocacy & Stewardship Handbook | Audubon Naturalist Society | <https://bit.ly/3oFVzZ0>
- Homeowner's Guide to Sustainability | Angi | <https://bit.ly/3H2adqq>
- Environment | Community Associations | <https://bit.ly/35izug8>

Progress and Implementation Notes:
SM will provide a draft action plan based on community meetings.



Local Environmental Groups & Green Initiatives (City of Gaithersburg, Maryland)

5. Take Action

- Coordinate with Board leadership, property managers, and local partners
- Tap into local resources
- Take a mix of easier short-term and more challenging long-term actions
- Celebrate wins big and small

Organic Lawn Care:

What the New Law Means for You and the Environment

by Daniel Dropp, Gaithersburg Stormwater Program Intern



The use of chemical pesticides and fertilizers poses a risk to environmental health. How could using these products on a small scale contribute to a large-scale problem, and why should you care?

What is the New Law?

Montgomery County's pesticide law restricts the use of "weed and feed" products and certain pesticides on private lawns, playgrounds, mulched recreation areas, and childcare facilities. The law aims to protect public health and minimize the potential pesticide hazard to people and the environment. Raising awareness and reducing pesticide use for cosmetic purposes is the goal. The law does not ban the sale of these products, which means you will still see restricted pesticides for sale. However, stores must place signage next to pesticides indicating which products are included in the ban. The law restricts most synthetic pesticides; organic pesticides are not affected. The City of Gaithersburg opted into the County's organic lawn care law effective December 2020.

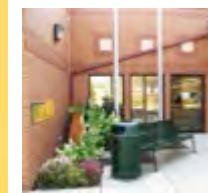
What's The Deal with Chemical Lawn Care Products?

Popular chemical lawn care products can contain ingredients harmful to both people and the environment. Glyphosate is one of those. Herbicides with glyphosate are useful for removing weeds but can have adverse side effects on our health, so much so that the World Health Organization has deemed the chemical a probable human carcinogen. Glyphosate bioaccumulates in nature, causing long-term damage to the environment. Through

bioaccumulation, man-made chemicals find their way into an organism's diet by seeping into its habitat and eventually into its food supply. Spraying glyphosate herbicide on plants will disrupt the digestive systems of bees and could contribute to the collapse of an entire honeybee colony. Rain ultimately washes the chemical down into streams and then the ocean, disrupting the reproductive cycles of fish. Thus the chemical continues to cause harm long after its usefulness on land.

Synthetic fertilizers also pose a threat and can have long-term consequences on our environment. Developed with exactly one goal in mind, these fertilizers can grow plants quickly, and they do this job well. But despite having exactly what a plant needs to grow quickly, these fertilizer products do not always give a plant what it needs to grow healthy. Most synthetic fertilizers only contain a mixture of the limited nutrients of nitrogen, phosphorus, or potassium. As a result, soil often lacks other essential nutrients such as calcium, magnesium, and sulfur, causing plants to develop weak roots and stems.

Synthetic fertilizers also contribute to topsoil depletion. Like any other natural resource, topsoil is finite, meaning it will run out if not preserved. Estimates predict that at our current rate, we will



6. Connect with Peer Communities

BUILDING A STRONG NETWORK OF SUSTAINABILITY CHAMPIONS



Join Sustainable Maryland for a
Virtual Connection Hour
Thursday, March 3, 4:30-5:30pm



Dear Sustainable Maryland-ers,

Spring is on the horizon (with snow drops and daffodils and crocuses making an appearance this week), which made us realize it's been awhile since we've checked in with you.

Please join the SM Team today (Thursday, March 3), from 4:30-5:30pm, for a Virtual Connection Hour, and share what's inspiring or concerning you these days.

We want to know:

- what's on your mind?
- how we can help you?
- what you are planning in your community?

And we'll update you on the Sustainable Maryland funding bill (HB100/SB14) that is making it's way through the Maryland General Assembly this month, and how you can help make it a reality.

All are welcome - Green Team members, local elected officials, government staff, state and nonprofit representatives, and engaged citizens.

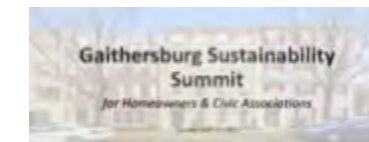


2nd Gaithersburg Homeowners/Civic Association Sustainability Summit

AGENDA

Location: Virtual - ZOOM: <https://usm1.zoom.us/j/94997369475>
Date: Thursday, March 24, 2022, 6:30-8:30pm

- 6:30 - 6:40pm: **Welcome from the City of Gaithersburg**
Speaker: Mayor Jui Ashman
- 6:40 - 7:55pm: **Overview: Sustainable Maryland Residential Action Framework**
Speaker: Mike Humminghake, Sustainable Maryland
- 6:55 - 7:25pm: **Spotlight: A Green Team in Practice**
Speakers: Susan Pourtan (Chair, Parkside Green - Parkside HOA, Bethesda) and Alex Stavitzky-Zelmeddin (Green Team Chair, Kentlands Go Green, Kentlands Citizens Assembly)
- 7:25 - 7:30pm: **Stretch Break**
- 7:30 - 7:50pm: **Building a Strong Network of Sustainability Champions**
Breakout Rooms Discussions
- 7:50 - 8:10pm: **Supporting Sustainability through Community-Driven Stormwater Action**
Speaker: Michael Weyand, Watershed Restoration Specialist, City of Gaithersburg
- 8:10 - 8:25pm: **Moving Forward: Expanding Green Teams in Gaithersburg**
Speaker: Natalia Sanchez, Sustainable Maryland
- 8:25 - 8:30pm: **Wrap Up /Next Steps**



7. Reflect and Revisit the Process

- Track and measure progress towards Green Team Action Plan implementation
 - Communicate progress to Board leadership and community residents
- Update your Action Plan at least every three to five years
 - Survey community members to identify shifting priorities
 - Set aside time for a Green Team retreat to discuss progress and next steps
 - Adopt lessons learned from peer-to-peer community convenings
- Continue growing your Green Team
 - Recruit additional Green Team members



Taking Steps Towards a More Sustainable Future

Get Involved

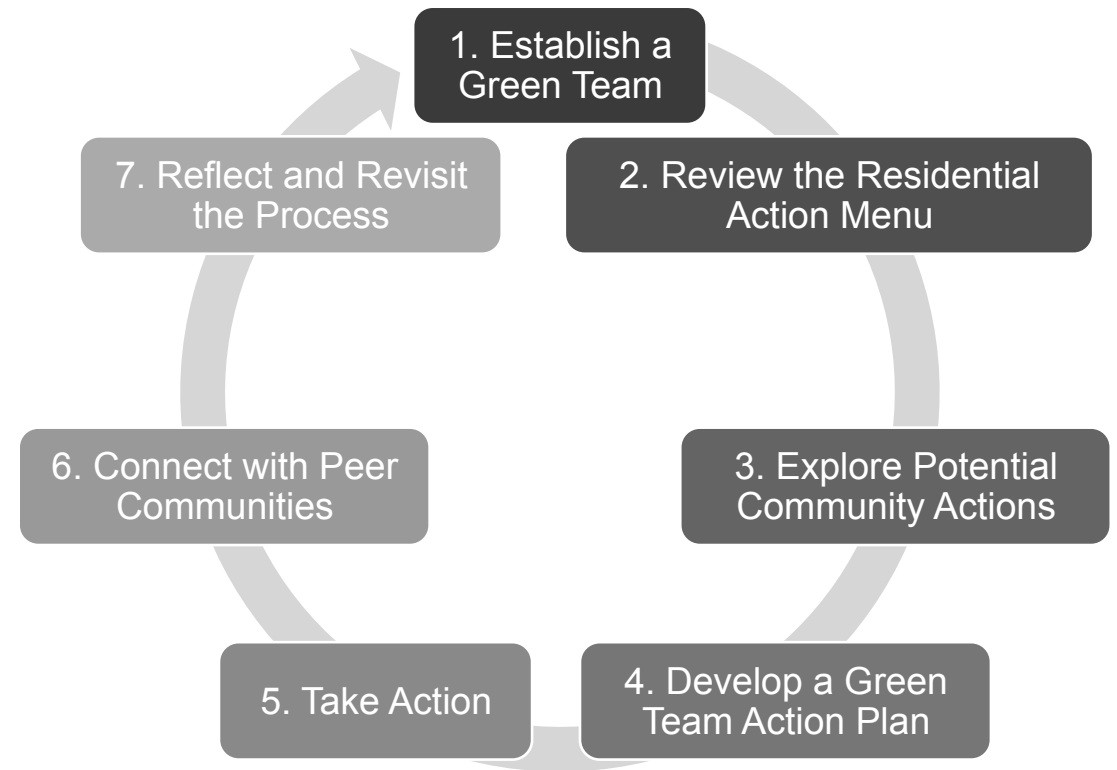
Residential Associations

- Share this video with your Board and propose adopting the SM Residential Action Framework
- Download the SM Residential Action Menu
- Partner with neighboring communities
- Pursue funding and technical assistance opportunities

Counties and Cities

- Promote the SM Residential Action Framework to community associations
- Partner with Sustainable Maryland to launch a targeted outreach campaign
- Convene a Sustainability Summit for HOAs and Civic Associations

SM Residential Action Framework





A Green Team in Practice

Parkside Green

Parkside



The Evolution of a Green Team

**Parkside
GREEN**



Parkside GREEN

**began as an Ad Hoc Committee in February 2018
and was approved as a standing committee in early 2019**

Mission Statement

To build an awareness of earth friendly, sustainable living practices that improve the quality of life we enjoy in our community, and to have a positive impact on our environment.

Slogan

Good for the community – Good for the environment.



What Kind of Community is Parkside?



The residents are all age ranges, including families, and many long time residents of 20+ years.

Its makeup is about 50% owner occupied and 50% renters.

Parkside is a garden style condominium community of 102 buildings with 954 units. The property backs up to Rock Creek Park & Beach at the edges of Bethesda and Kensington, MD.





The Way the Committee Started

After getting the approval of the Board to establish Parkside GREEN, we began by putting the word out to the community to invite residents to participate.

We started holding monthly meetings that typically had 4- 6 committee members plus occasional drop-ins by other residents.

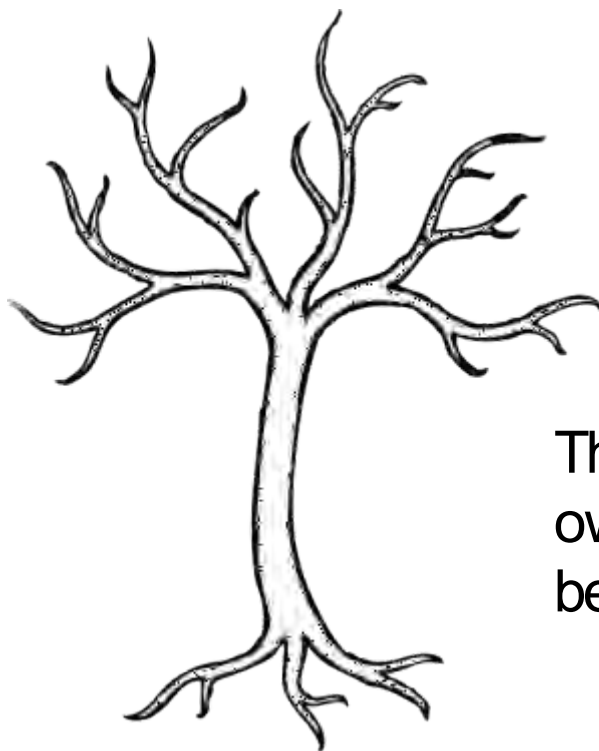
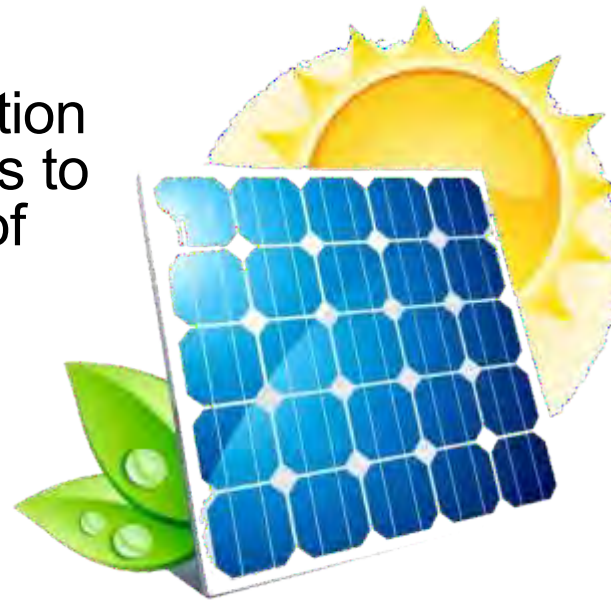
The committee is currently made up of 9 members plus a board liaison. Monthly meetings are open to all.





You Never Know Until You Start...

Interestingly, the early motivation for starting the Green Committee was to pursue solar energy & other sources of renewable energy...



Then the committee took on a life of its own, and branches of many initiatives began sprouting.



Different Areas of Interest Were Explored

1. Community Garden
2. Recycling
3. Litter
4. Oversized trash
5. Solar and Renewable Energy Sources
6. Green Tips for Residents
7. EV Charging Stations
8. Education (topics included recycling, composting, oversized trash, native plants, energy use, tips, etc.)



The direction of the committee became member and resident driven.



Initiatives were explored...first up, Community Garden



A lot of energies in the first year went into having a community garden – researching, pricing out, getting approval through the board, developing concept etc.

Had to wait for deer fencing; group voted to go ahead without for first year.



**Lynn Parsons,
caging to protect, first year**





The Community Garden is a *communal garden* without specified plots; this allows more people to participate.

Activities for the gardeners have included:

1. Garden “group work” days
2. Pre-season/Post-season meetings
3. Mulch and compost runs
4. Kids’ “seed collection”
5. Scavenger hunts

Activities at the garden for the community have included:

1. **Open House Sampler Days** – designated afternoon for “garden tour” and pick and choose a sample of herbs, ready to harvest produce
2. **Garden Party Potluck** – (pre-Covid) Gardeners prepared food made from ingredients from garden and had a “garden party” for community.

The Community Garden has flourished and is going into its fifth year.

Now that systems are in place, we have **Team Leaders** for organizing & communicating, and garden members who focus on different areas such as composting, kids activities, native perennial area, etc.



Community Garden

*Crops,
activities
and fun*



Each year, call to residents to participate; goes to lottery system, with waiting list for overflow.



Community Garden

Native perennials are planted around the inside perimeter of the community garden.

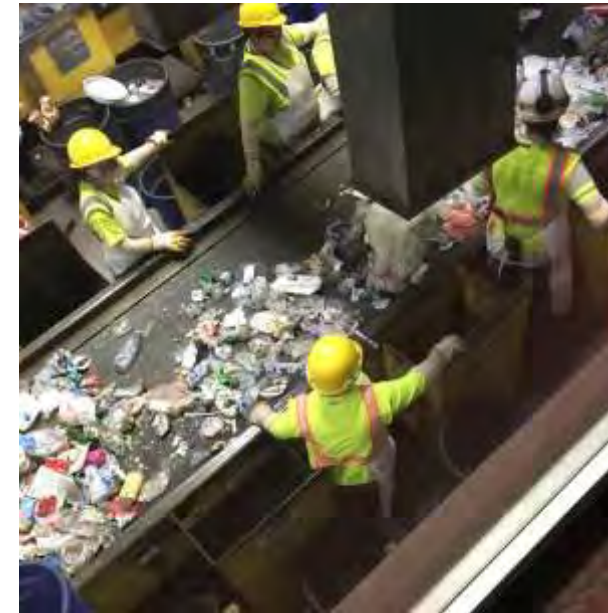


*Milkweed - Purple Coneflower - Obedient Plant - Black Eyed Susan
Purple Aster – Bee Balm - Yarrow - Joe Pye Weed*

Initiative: Recycling Awareness & Reducing Trash



Community Field Trip to the
Montgomery County Recycling
Center



Also offered Zoom webinars by
the County for community.



Recycling Awareness & Reducing

Parkside GREEN & Montgomery County Partnership – Door Hanger Project

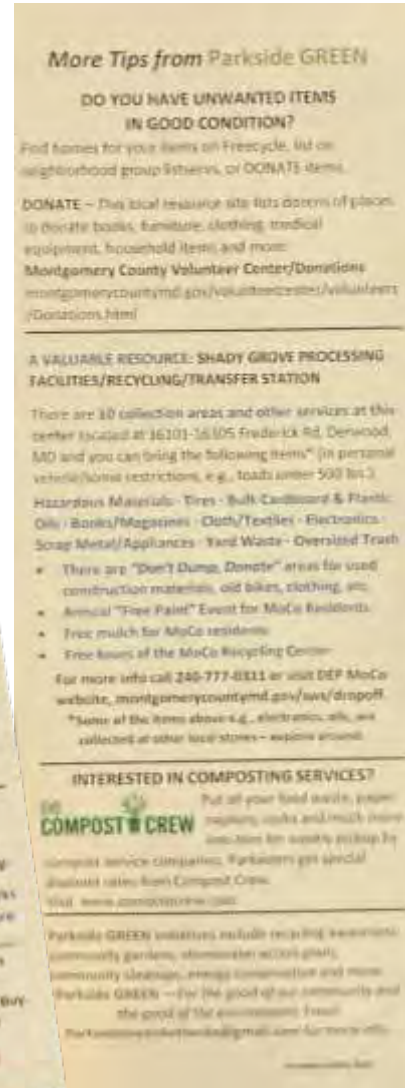
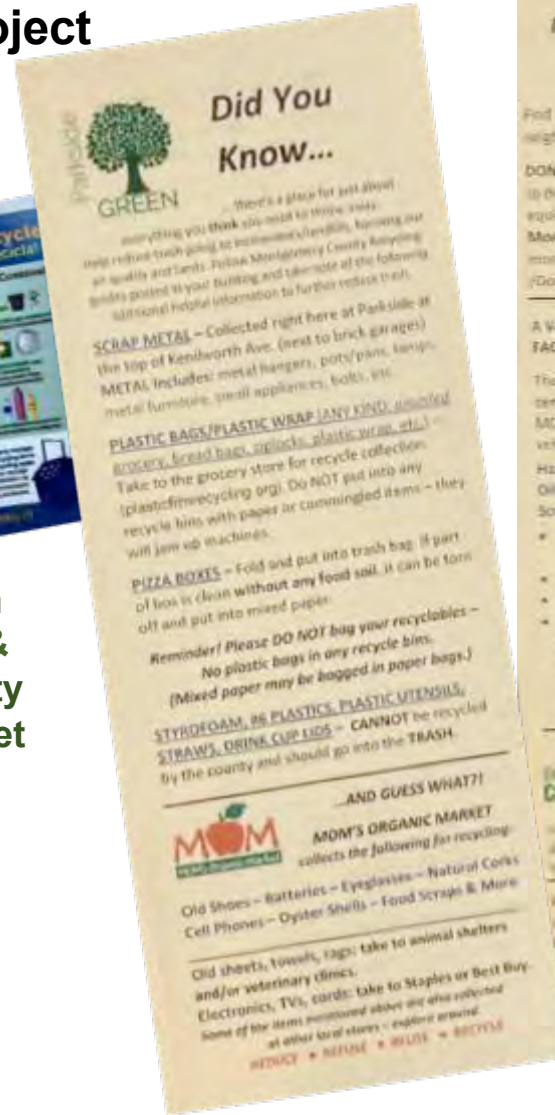
Volunteers distribute to 954 units



Green Tips & County Door Hanger 2019



Green Tips & County Magnet 2022





Initiative: Community Events

Educational

Participation for all ages

All inclusive

Engaging

Learn

Partner with other committees

Network with other organizations

For all interests

Fun

Build stronger communities

Community Events – Earth Day





Community Events Earth Day & Scavenger Hunts



Community Events – Cicada Day



Science tent, multi-committee participation & volunteers, activities for all ages.



Community Events – Activities



Make a Cicada



Montgomery County Dept. of Energy Light Bulb Exchange & Decorating Activity



Origami



Initiative: Litter Walks

Started as an idea to do occasionally, and has been so popular we do twice monthly.



Been great for community involvement; increase awareness of litter and stormwater pathways.



Initiative: Litter Walks Leading to Stream Cleanups



Bill has an idea

How about we organize for surrounding area too?



Green Teamers Certified to Lead – Partnership with Rock Creek Conservancy & Montgomery County Parks



How Do We Get All of This Done? *(the initiatives, that is)*

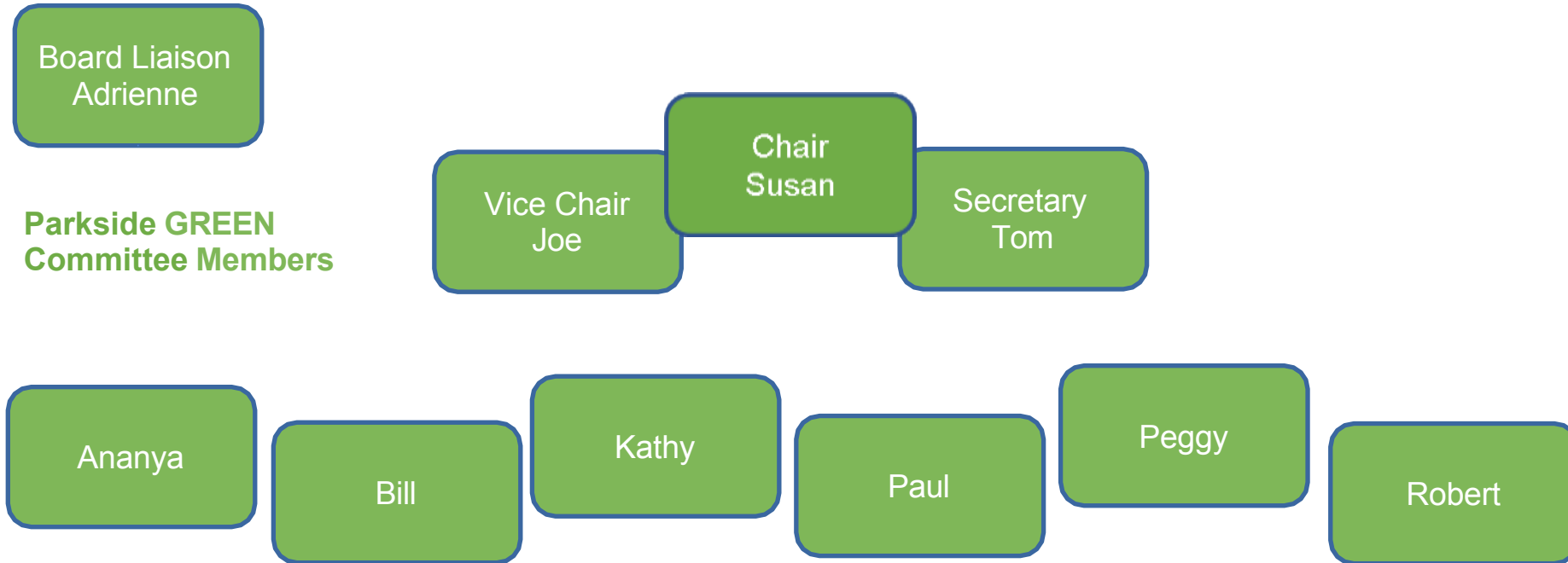
It Takes Many Hands



Work gloves drying...

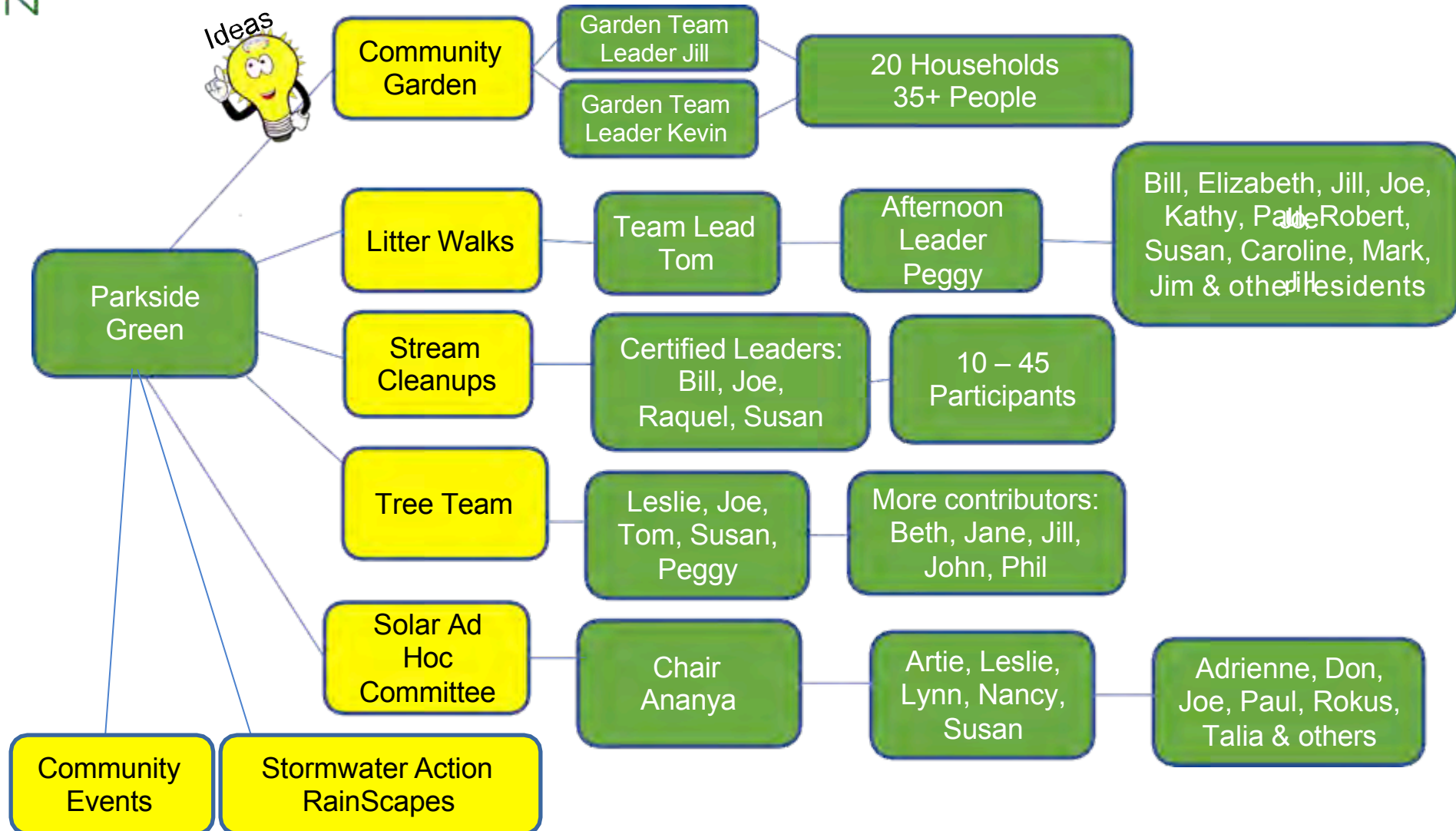


Committee Structure



Committee Structure Evolves

with Initiatives Led by Members & Other Residents



People – Ideas - Action



People are amazing

– people have come to share ideas, and as time goes along, more people become involved with even more ideas.

Many ideas are building on top of initiatives that have been started.

Project ideas and initiatives happen when there are people who want to participate, take action, and/or take the lead.



The initiatives branch out with add-ons, sometimes planned, sometimes unexpected.

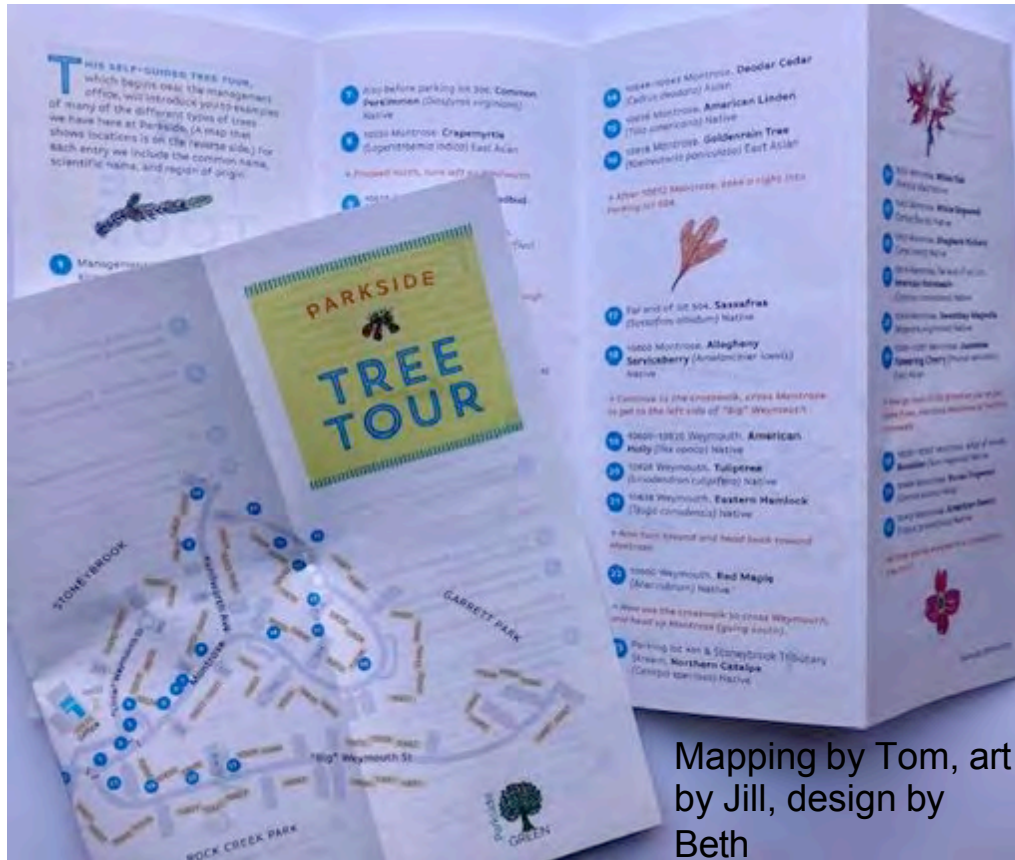
Expansion happens by bringing in others with certain interests since not everyone on the Green Committee is interested in the same projects.

Examples: A Tree Team and a Solar Ad Hoc Committee.



Tree Identification Program Leads to a Tree Tour...

Tree ID project took many turns. Started as a “simple” idea & from there, the project expanded and branched out... into a Tree Tour brochure.



Mapping by Tom, art by Jill, design by Beth

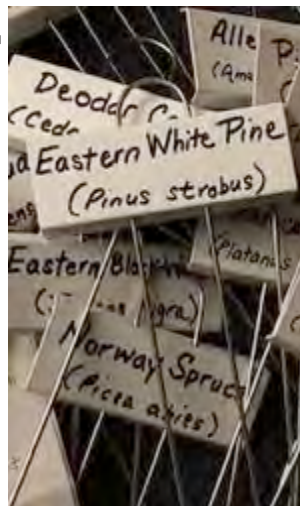




...Leads to a Tree Team.

Now over 100 trees labeled within the community.

Joe designed a spreadsheet of all labeled trees so species, locations and more can be sorted.



Tom has provided the GPS locations of the trees on tour.

...a Tree Team...still branching out

Leslie designed interactive learning boards for the upcoming Earth Day event.



Peggy will be gathering flower, fruit and leaf specimens to complete the learning boards and displays.



Sample fruit display from trees in community.

Ideas for the future include having the information online when the new community website is designed.



Solar Ad Hoc Committee... leads us to the Green Bank

Sometimes some things take time and can't happen when you think they will.
That's OK...since other things (projects) can happen.

Remember the impetus for the Green Committee? It started with a desire to explore Solar and Renewable Energy sources...

With the strength of interest of Ananya, committee member, we received approval to have a Solar Ad Hoc Committee to better focus on the topic, and to get other interested/experienced residents.

Through the ad hoc committee, Paul, Joe and Lynn attended webinars and learning sessions by the **Montgomery County Green Bank**. The Green Bank's assessment would include not only a solar feasibility study but a full energy audit.

Ananya and Joe propose the audit; the Green Bank presents to the Board of Directors, and next up is the energy audit/assessment.

Ananya
heads up a
Solar Ad Hoc
Committee

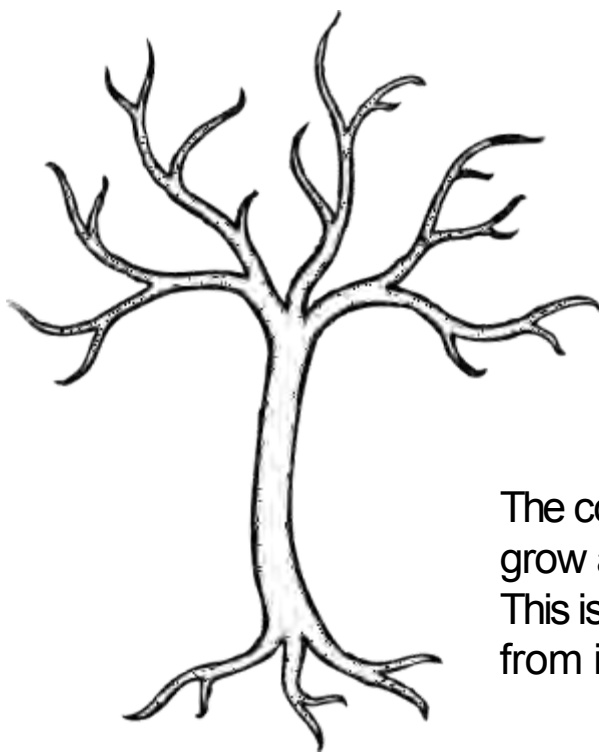




So here we are, back to the beginning...

the roots are always there --

impetus for committee = now nearing fruition of determining solar feasibility and renewable energy sources.



The committee, people & initiatives continue to branch out, grow and change.

This is how the committee is evolving, from the ground up, from ideas, and people who help to take action.



Green Teams at an HOA bring many benefits...and may take many turns along the way, enriching the community and the environment.

Thank You!

Susan Pourian

Parkside GREEN

ParksideGreenBethesda@gmail.com

Kentlands Green Team

Alex Stavitsky-Zeineddin

- **Established 2021, Sustainable Maryland**
 - **Monthly Meetings**
- **Expanding to 9 members**



Kentlands Green Team Discussions & Initiatives



Kentlands Green Team is Working on:

- Annual Cleanup
- Monthly #PloggingKentlands
- Composting
- Communications
- Partnerships (KCF-other local organizations, City of Gaithersburg, Kentlands Downtown)
- Electric Blowers
- Native Plantings



5-minute Break

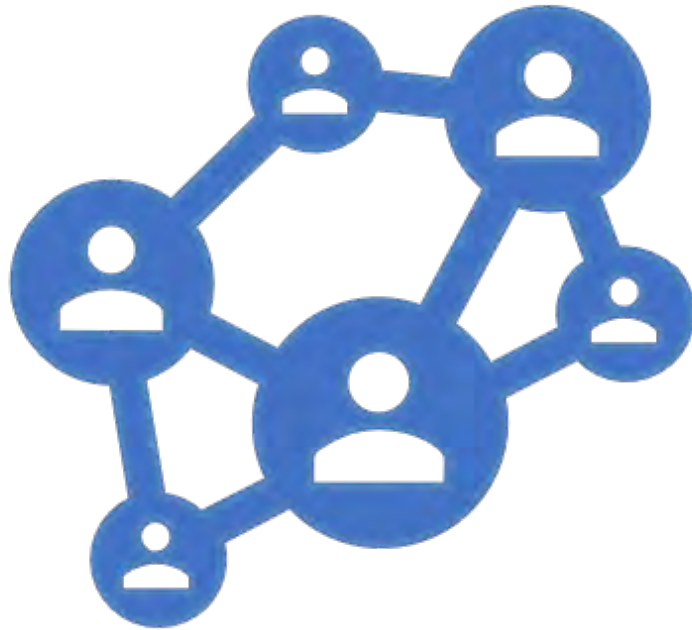


Building a Strong Network of Sustainability Champions

Breakout Sessions

1. What would your community look like if it was strong, healthy, and sustainable?
2. What are some challenges you are having in your community?
3. What are creative ways you can engage residents?
4. What resources or assistance might you need to take action?

Please have someone take notes and share them with the SM Team!!!



A close-up, low-angle shot of a colorful umbrella in the rain. The umbrella is open, with its ribs visible. The colors are vibrant: red, orange, and yellow. The background is a dark, rainy scene with blurred green foliage and falling raindrops, creating a bokeh effect. The overall mood is serene and protective.

Supporting Sustainability through Community-Driven Stormwater Action

Gaithersburg's Public Works - Stormwater Program



G-PARC

Gaithersburg Parks, Arts and Recreation Corporation



Gaithersburg Sustainability Summit 2022

Outline

1. Stormwater Program Recap
2. HOA/COA Opportunities
3. Upcoming Initiatives

“Creating A Sense of Place”



Dr. Michael G. Weyand (he/him/his)

Michael.Weyand@GaithersburgMD.gov

Stormwater Management Program

3/24/2022



Native Land Acknowledgment

Seneca Land

Piscataway Land

This past year...

CITY OF GAITHERSBURG - STORMWATER PROGRAM

The Art of Clean Water



Storm Drain Art

STORM DRAIN ART CONTEST 2021



POLLUTION MAKES ME CRABBY



City of Gaithersburg
The Gaithersburg Parks, Arts and Recreation Corporation (G-PARC) Arts & Culture Alliance
City of Gaithersburg Stormwater Management and Cultural Events and Services Division

ENGLISH
Artist: Kylie Wilbur
Category: Save the Creatures of the Bay
Title: Pollution Makes Me Crabby

This painting is based off the Maryland blue crab. The rainwater in Montgomery County eventually flows into the Chesapeake Bay. My storm drain would educate the public about the importance of not polluting because our storm drains impact the creatures of the Bay.

SPANISH
Artista: Kylie Wilbur
Categoría: Salva a las criaturas de la bahía
Título: La contaminación me pone de mal humor

Esta pintura está basada en el cangrejo azul de Maryland. El agua de lluvia en el condado de Montgomery eventualmente fluye hacia la bahía de Chesapeake. Mi desagüe pluvial educará al público sobre la importancia de no contaminar porque nuestros desagües pluviales impactan a las criaturas de la Bahía.

FRENCH
Artiste: Kylie Wilbur
Catégorie: Sauvez les créatures de la baie
Titre: La pollution me rend désagréable

Cette peinture est basée sur le crabe bleu du Maryland. L'eau de pluie du comté de Montgomery s'écoule finalement dans la baie de Chesapeake. Mon égout pluvial informe le public sur l'importance de ne pas polluer parce que nos égouts pluviaux ont un impact sur les créatures de la baie.

KOREAN
작가: 키일리 윌버 (10세) - 세이브 크래브를 사랑해 줘!
분류: 배 (Bay)의 생물을 지켜 줘!
제목: 환경오염은 나쁜 기분해 줘!

이 그림은 메릴랜드 크랩을 모티브로 한 것입니다. 상고베리 카운티의 빗물은 결국 찰스 리버로 흘러갑니다. 빗물 배수관 (Bay)에 적시는 생물에 대해 영향을 주기 때문에 빗물 배수관을 오염시키지 않도록 사람들을 교육하는 것은 매우 중요합니다.



Mindful Salting

Using the right amount of salt to melt snow and ice for keeping the community safe and water clean.

Guiding Principles

- ❖ Critical to Public Safety
- ❖ Too Much of a Good Thing
- ❖ Timely & Accurate



Jingle Jubilee





Jingle Jubilee





Stream Monitoring at Washingtonian Woods Park



WALTON LEADS II
GARDEN & MEADOW

Follow the Water!

WELCOME TO THE

Butterfly Commons



BROUGHT TO YOU BY





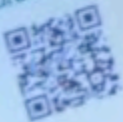
WELCOME TO THE

Butterfly Commons

As you walk the gardens, see if you can identify the plant species listed here. They will bloom at different times during the growing season, so you may want to visit often to enjoy all of the different flowers, textures, and associated insects that visit the gardens.

Consider adding "Healthy Habitats" to your landscape to encourage pollinators to visit your home and to help control stormwater at the source.

For more information on this project and on how to get started on your property, visit: urbanecosystemrestorations.org



This beautiful "Healthy Habitat" native plant garden is working hard for the Lakelands neighborhood. It is providing food and habitat for birds and pollinators. With their deep roots, the native plants you see are helping reduce stormwater runoff from nearby houses and yards, thus reducing ice on the sidewalks in winter and the need for sidewalk salting. And these native plants are adapted to local conditions, so they don't need fertilizers, pesticides, or watering once established.



AROMATIC ASTER



BLUE FLAG IRIS



GOLDEN RAGWORT



FOAMFLOWER



WILD GERANIUM



BLACK-EYED SUSAN



INKBERRY



ROSY SEDGE

TUFTED HAIRGRASS



Proclamation
"Lakeland Community Butterfly Conservatory Day"
2024

GO WITH THE FLOW

Our community needs rain to help our gardens and trees grow. But storms can sometimes bring too much of a good thing!

SEGUIR LA CORRIENTE

Nuestra comunidad necesita la lluvia para ayudar a que nuestros jardines crezcan. ¡Pero las tormentas pueden traer, a veces, demasiado de algo bueno!



1

Rainwater flowing off hard surfaces like roofs, roads, and sidewalks carries pollutants and causes flooding. **Rain gardens** like this one catch water and trap pollutants.

El agua de lluvia que fluye desde las superficies duras como tejados, calles y aceras trae contaminantes y causa inundación. **Los jardines de lluvia** como éste recogen agua y atrapan los contaminantes.

Oil and waste
Petróleo y residuos

3

Water soaks in,
reducing runoff
and replenishing
groundwater.

4

El agua se empapa,
reduciendo la escorrentía
y reponiendo el agua
subterránea.



Scan the QR code to learn more

Escanee el código QR para más información

GAITHERSBURG, MARYLAND

You are standing in the Long Draught Branch Creek watershed, within the Great Seneca Creek watershed. **Watersheds** are areas of land that drain into a body of water. Rain landing here will flow through creeks

Está en la cuenca hidrográfica de "Long Draught Branch Creek," dentro de la cuenca de "Great Seneca Creek." Las cuencas hidrográficas son zonas de tierra que desembocan en un cuerpo de agua. La lluvia que cae aquí fluirá por

9

pollutants targeted

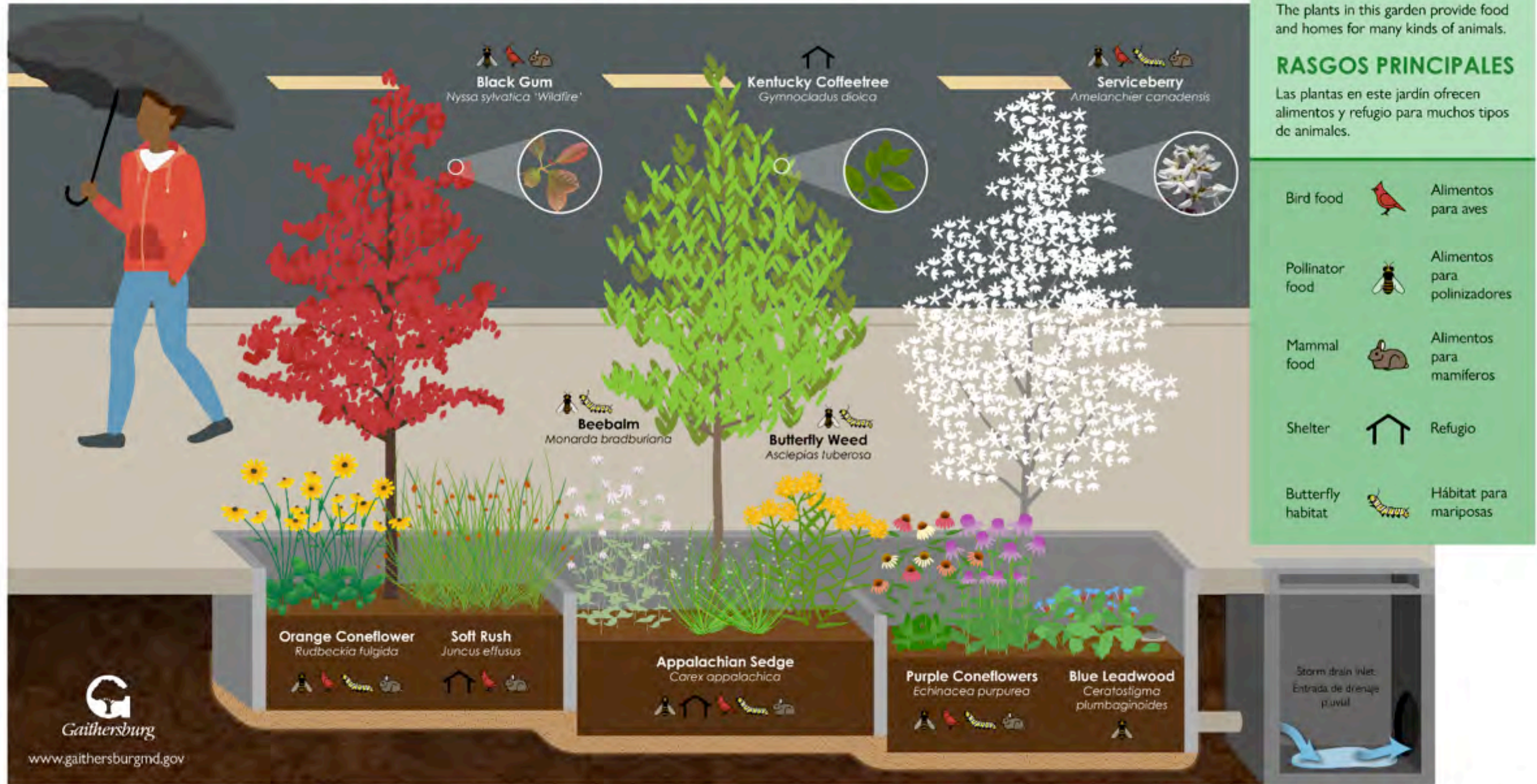
250,000+

gallons filtered/year
galones filtrados/año

19

plant species
especies de plantas

BENEFICIAL PLANTS | PLANTAS BENÉFICAS



www.gaithersburgmd.gov

YOU CAN GROW BENEFICIAL PLANTS TOO!



¡TAMBIÉN PUEDE CULTIVAR PLANTAS BENEFICIOSAS!

**THESE
AREN'T
WEEDS!**

**¡ESTAS NO
SON MALAS
HIERBAS!**



**Check out the signs around
the garden to learn more.**



**Mira los carteles en el
jardín para aprender más.**

Money, Tools, Ideas & Resources for Green Teams

CITY OF GAITHERSBURG - STORMWATER PROGRAM

Rainscapes Rewards

City of Gaithersburg Soil Test Rebate Application

Application for Single Family / Residential Townhouse

Healthy soil slows down runoff and reduces the amount of stormwater entering local streams. Collecting and storing rainwater where it falls on soil provides many benefits, including reduced water usage for irrigation and reduced chemical and nutrient pollution entering our waterways via runoff.

Rebate Terms

Program participants who follow the application guidelines are eligible to receive a **rebate of up to \$20 per soil test, with a maximum of two rebates per year for up to \$40 per property**. Program participants will be required to provide documentation showing the completion of their soil test before receiving a rebate.

Eligibility

- To participate, the subject property must be located within the jurisdictional boundaries of the City of Gaithersburg. If you are unsure about the location of your property, check the address lookup map [here](#) or call Environmental Services at 301-258-6330.
- Projects are not eligible if they are associated with permit approval requirements for new building construction, additions, or renovations.

Application Process and Requirements

1. Submit an application.
2. Receive City approval before purchasing the soil test.
3. Purchase soil test kit and complete the soil test.
4. Submit a reimbursement form along with soil test receipts and results.
5. Receive reimbursement check in the mail.

Please submit the completed application and required documentation to the following by mail or email. Contact Gaithersburg Environmental Services with any questions.

City of Gaithersburg – Environmental Services
Soil Testing Rebate
800 Rabbitt Road
Gaithersburg, MD 20878

environment@gaitthersburgmd.gov



Rainscapes Rewards Program



Conservation Landscaping

\$1 per square foot rebate.

(250sqft Plant Bed = \$250 Rebate)



Rainwater Collection

\$1 per gallon of rain collected

(e.g. 50-gallon Rain Barrel = \$50 Rebate)



Soil Test Rebate

Up to \$20 rebate per test

(Max \$40 Per Household)





Track 1: Outreach: Raise public awareness and engagement in the challenges and solutions to restoring Gaithersburg's natural resources: local green spaces, parks, streams, rivers, and bays. (Funding up to \$30,000)

Track 2: Restoration: Engage people in on-the-ground community-based projects that reduce polluted runoff and benefit communities.

(Up to \$50,000)

Track 3: Outreach and Restoration: Combine the goals for both tracks above to achieve increased outcomes. (Up to \$75,000)

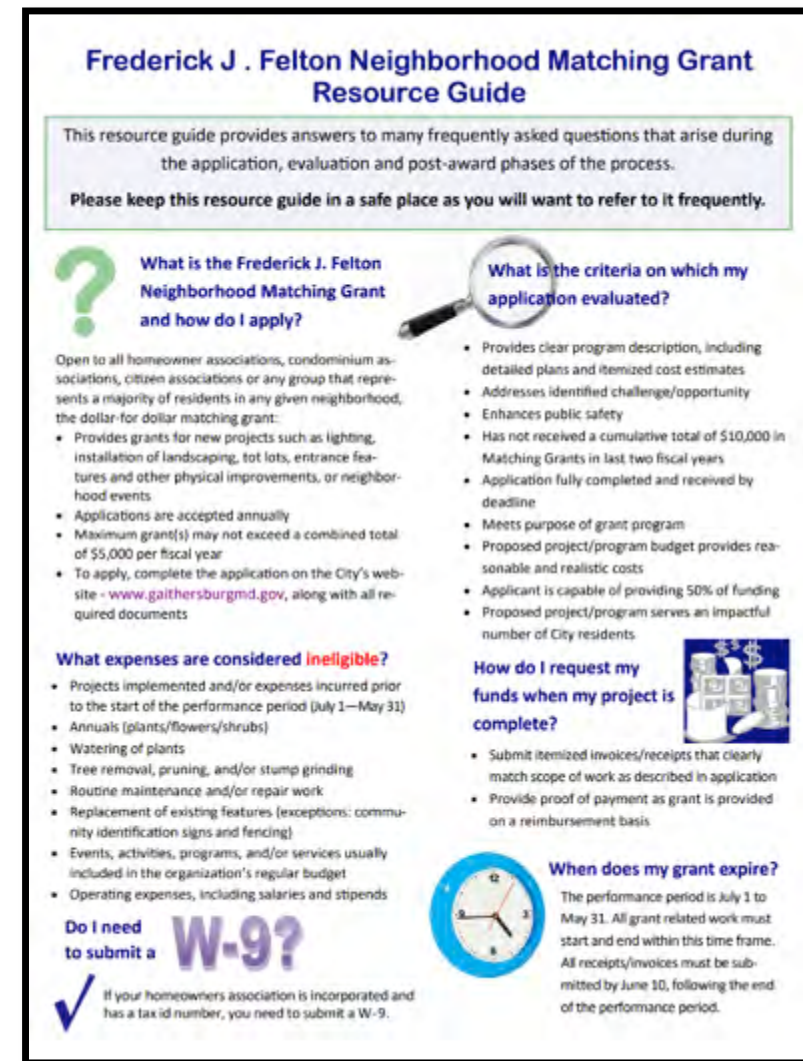
Frederick J. Felton Neighborhood Matching Grant Program

This program helps neighborhood associations make improvements in their communities by providing dollar-for-dollar matching grants.

Up to \$5,000

New projects such as lighting, installation of landscaping, tot lots, entrance features, other physical improvements, or neighborhood events.

<https://www.gaithersburgmd.gov/government/city-manager/frederick-j-felton-neighborhood-matching-grant-program>



Frederick J. Felton Neighborhood Matching Grant Resource Guide

This resource guide provides answers to many frequently asked questions that arise during the application, evaluation and post-award phases of the process.

Please keep this resource guide in a safe place as you will want to refer to it frequently.

What is the Frederick J. Felton Neighborhood Matching Grant and how do I apply?

Open to all homeowner associations, condominium associations, citizen associations or any group that represents a majority of residents in any given neighborhood, the dollar-for-dollar matching grant:

- Provides grants for new projects such as lighting, installation of landscaping, tot lots, entrance features and other physical improvements, or neighborhood events.
- Applications are accepted annually
- Maximum grant(s) may not exceed a combined total of \$5,000 per fiscal year
- To apply, complete the application on the City's website - www.gaithersburgmd.gov, along with all required documents

What expenses are considered ineligible?

- Projects implemented and/or expenses incurred prior to the start of the performance period (July 1—May 31)
- Annuals (plants/flowers/shrubs)
- Watering of plants
- Tree removal, pruning, and/or stump grinding
- Routine maintenance and/or repair work
- Replacement of existing features. (exceptions: community identification signs and fencing)
- Events, activities, programs, and/or services usually included in the organization's regular budget
- Operating expenses, including salaries and stipends

Do I need to submit a W-9?

✓ If your homeowners association is incorporated and has a tax id number, you need to submit a W-9.

What is the criteria on which my application evaluated?

- Provides clear program description, including detailed plans and itemized cost estimates
- Addresses identified challenge/opportunity
- Enhances public safety
- Has not received a cumulative total of \$10,000 in Matching Grants in last two fiscal years
- Application fully completed and received by deadline
- Meets purpose of grant program
- Proposed project/program budget provides reasonable and realistic costs
- Applicant is capable of providing 50% of funding
- Proposed project/program serves an impactful number of City residents

How do I request my funds when my project is complete?

- Submit itemized invoices/receipts that clearly match scope of work as described in application
- Provide proof of payment as grant is provided on a reimbursement basis

When does my grant expire?

The performance period is July 1 to May 31. All grant related work must start and end within this time frame. All receipts/invoices must be submitted by June 10, following the end of the performance period.

LITTERATI Quick Start Guide

1

Download the app & claim your account



litterati.org

2

Join the City of Gaithersburg - Trash Cleanup Reporting with this challenge code: **GBURGTRASH**



Check that your phone's GPS location settings are ON

3

Choose your **photo capture method**:

1. take photos of each litter item as you go!



2. Take photos of each filled bag



4

Upload and tag your photos using wi-fi after you hike



1. Go into your gallery then tag your photos by **object, material or brand**



2. Tag filled bag(s) using one of the following:
FilledGroceryBag
TallKitchenBag
LargeTrashBag
LargeRecycleBag
XLtrashbag



For more information, visit our [FAQ page](#)



LITTERATI Tag Examples

1. Litter Items



sodacan
cocacola
beercan
coorslight



papercoffeecup
starbucks



plasticstraw



plasticwaterbottle
deerpark



plasticbag



tire

2. Filled Trash Bags



FilledGroceryBag



FilledPaperBag



TallKitchenBag



LargeTrashBag



LargeRecycleBag



XLtrashbag

*Please Note: TagsShouldHaveNoSpaces



For more information, visit our [FAQ page](#)



Scalable Environmental Events



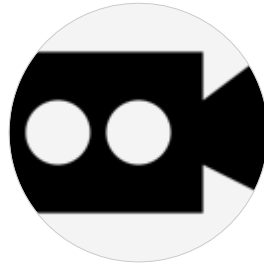
**Trash
Cleanups**



**Community
Shredding**



**Native Plants &
Tree Planting**



**ENV Film
Screenings**



**Food Composting
Drop-Off**



Stream Walks





Local Environmental Groups & Green Initiatives

(City of Gaithersburg, Maryland)

This list provides opportunities to build a better and more sustainable future for us all. Participating in environmental groups and other green initiatives helps address the global challenges we face, including clean water, inequality, climate change, environmental degradation, peace, and environmental justice. Learn about, contribute to, advocate for, and invest in local solutions that improve not only Gaithersburg, but our entire planet.

Climate Action & Affordable and Clean Energy

(Resilience Groups, Climate Planning, Energy Reduction, Carbon Footprint Mapping, Sustainable Solutions)

- [Gaithersburg Green Drinks](#)
- [My Green Montgomery](#)
- [Solar United Neighbors](#)

Life Below Water

(Stream Monitoring, Trash Cleanup Events, Invasive Species Removal, Tree Plantings)

- [Muddy Branch Alliance](#)
- [Seneca Creek Watershed Partners](#)
- [Watts Branch Watershed Alliance](#)
- [Interfaith Partners of the Chesapeake](#)
- [Alice Ferguson Foundation](#)
- [Izaak Walton League of America](#)
- [Defensores de la Cuenca](#)

Sustainable Cities & Communities

(Green Policy, Environmental Advocacy, Friends of Park Groups, Biking Paths, and Hiking Trails)

- [Gaithersburg Environmental Affairs Committee](#)
- [Gaithersburg Transportation Committee](#)
- [Gaithersburg Parks, Arts and Recreation Corp.](#)
- [Sierra Club](#)
- [Audubon Naturalist Society](#)
- [Friends of Seneca Creek State Park](#)
- [Citizen Climate Lobby](#)

Life on Land

(Healthy Soils, Native Plants, Pollinators, Composting, Organic Lawn Care)

- [Bee City Committee](#)
- [Gaithersburg's Balcones Rewards Program](#)
- [Izaak Walton League of America](#)
- [Master Gardener Program U of MD Extension](#)
- [Montgomery County Soil Conservation District](#)
- [Institute for Local Reliance](#)
- [Friends of Seneca Creek State Park](#)

Quality Education

- [Educational Enrichment Committee](#)
- [SciTech2U](#)

Zero Hunger

- [Community Advisory Committee](#)
- [Montgomery County Food Council](#)
- [Manna Food Center](#)
- [Gaithersburg HELP](#)

Gender Equality & Reduced Inequalities

- [Montgomery County League of Women Voters](#)

No Poverty, Decent Work and Economic Growth

- [Community Advisory Committee](#)
- [Economic & Business Development Committee](#)

Local Green Neighborhood Groups & Partnerships for the Goals

- [Montgomery County Community Foundation](#)
- [Montgomery County Volunteer Center](#)
- [Kentland's Go Green](#)
- [Saybrooke Green Team](#)
- [Diamond Farms/Hidden Creek Green Team](#)
- [St. Rosa Lima Green Team](#)
- [East Gaithersburg United](#)



Do you know of other local organizations or environmental initiatives that should be on this list?

Please e-mail environment@gaithersburgmd.gov.

301-251-6370

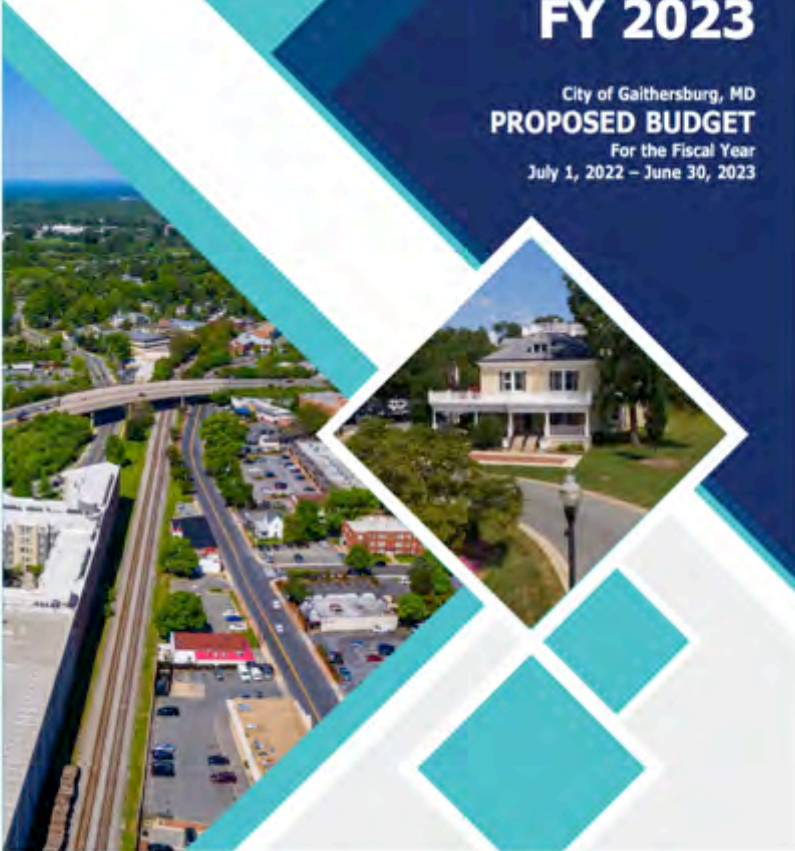


gaithersburgmd.gov

<https://www.gaithersburgmd.gov/home/showpublisheddocument/8916/63753994853930000>

FY 2023

City of Gaithersburg, MD
PROPOSED BUDGET
For the Fiscal Year
July 1, 2022 – June 30, 2023

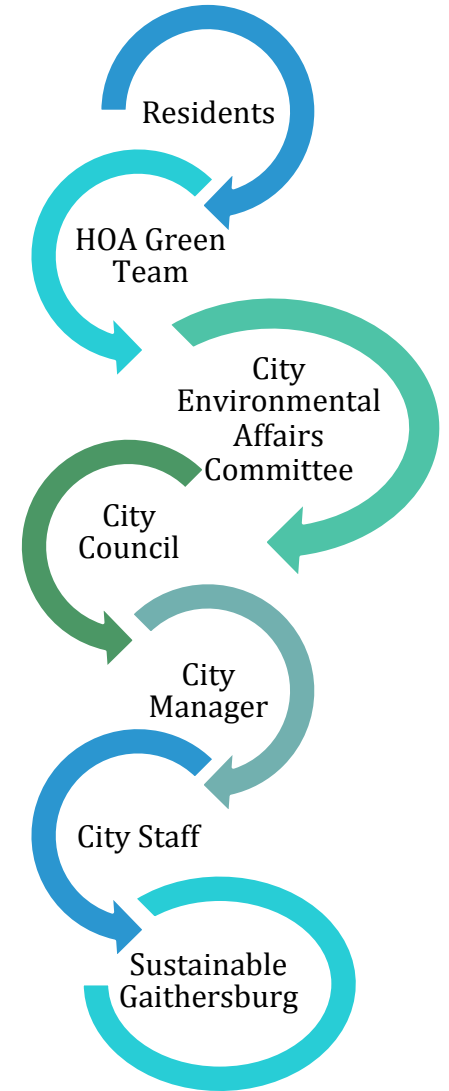


Strategic Plan

An Overall Approach to Achieving the
Vision of the City of Gaithersburg



Fiscal Year 2022
www.gaithersburgmd.gov



On The Horizon...

CITY OF GAITHERSBURG - STORMWATER PROGRAM

Tree Rebate

The Tree Rebate utilizes the City's Rainscapes Rewards program supporting healthy watersheds by subsidizing the cost of planting of trees on private property. Trees on your property can save money by lowering heating and utility bills, but also support healthy watersheds by decreasing stormwater runoff and pollutants that reaches our local waters. Trees also beautify our neighborhoods, cool streets, and shelter wildlife. With all these benefits, planting a tree just makes sense!

How it Works

Purchase and plant a tree on private property — residential or commercial — located in [Gaithersburg](#). Then submit a completed Tree Rebate form online or by mail. Be sure to include a receipt for each tree you list and have it to us within one year of purchase. The tree must be at least 4 feet tall at the time of planting. Please note there is a 10-tree limit for each property. Trees purchased for less than the rebate limit will be eligible to receive full reimbursement. Please ensure the planting location provides [adequate space](#) for tree growth and will not conflict with homes, above ground utilities, or below ground utilities. See [species list below for canopy range of common trees](#).

\$50 Rebates

Any tree (with exceptions listed in the Fine Print, below) that will achieve a small canopy spread of or under 30 feet will be considered eligible for a \$50 rebate.

\$75 Rebates

Any tree that will achieve a medium canopy spread between 30 and 70 feet will be considered eligible for a \$75 rebate.

\$100 Rebates

Any tree that will achieve a canopy spread 70 feet and more will be considered eligible for a \$100 rebate.

Tree Rebate Form (Draft Website Form)

Please complete all fields for each tree you intend in your rebate application. Include a purchase receipt for each tree listed. Rebate request must be received within one year of receipt date. There is a limit of 10 trees per property.

Contact Information

Name/Property Owner

REQUEST FOR PROPOSALS

NO. 2022-027

Stormwater Outreach

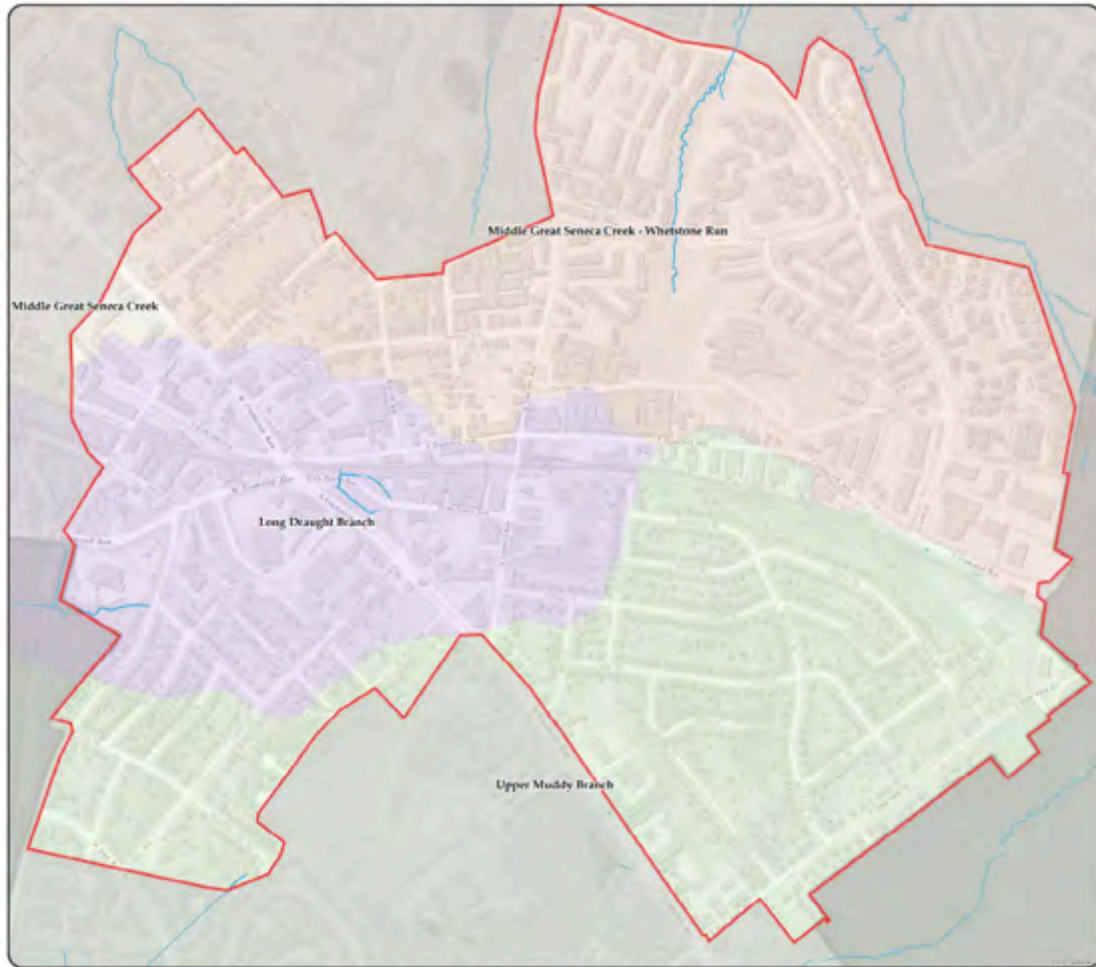
Solicitation Issued: March 24, 2022
 Proposals Due: May 4, 2022 Time: 5:00 PM
 Proposals Submitted To: 2022-027RFP@gaitthersburgmd.gov

[https://
www.gaithersburgmd.gov/
home/
showpublisheddocument/
10758/637836446649830
000](https://www.gaithersburgmd.gov/home/showpublisheddocument/10758/63783644664983000)

MAYOR
Ted Ashtman

COUNCIL MEMBERS
Neil Harris
Lisa Henderson
Bria McVieley
Ryan Spangol
Robert T. Wu

CITY MANAGER
E. James Perry



Headwater Study
 City of Gaithersburg
 Watershed Map



<https://www.gaithersburgmd.gov/home/showpublisheddocument/10308/637752568268770000>

Latest Stormwater & Environmental News



Green-In-Gaithersburg Newsletter

<https://www.gaithersburgmd.gov/government/enewsletters>

Up Next:

- 1) [Cross-generational Events](#)
- 2) [Celebrating Water Heritage](#)
- 3) [The Art of Trash Grabbing](#)



Email: Michael.Weyand@GaithersburgMD.gov

Expanding Green Teams in Gaithersburg



- Sustainable Maryland has been funded for Phase 3.0 (2022-2023), including 6 new communities

Goals:

- Expand the number of Green Teams in the City each year
- Help HOAs get funding for on-the-ground projects
- Foster regional clusters and partnerships
- Target projects and activities in sub-watersheds
- Hold Annual Sustainability Summit for HOAs and Civic Associations (peer to peer connections and learning)



Sustainable Maryland Next Steps

- Slides and resources from today's presentation will be shared in the coming days
- SM will continue to work with the City to engage HOAs and Civic Associations to listen, learn, and provide support
- Please fill out the electronic survey (coming soon) to let us know how we did and what other resources and assistance you may need to advance your local sustainability efforts



Stay Connected



ENVIRONMENTAL
FINANCE CENTER

- Contact:
 - Mike Hunninghake
SM Program Manager
mikeh75@umd.edu
(301) 405-7956
- Visit the Sustainable Maryland Website
 - <https://sustainablemaryland.com/>
- Join the Sustainable Maryland [Mailing List](#)
- Follow Sustainable Maryland on [Facebook](#)

