

Shady Grove Village HOA

GREEN TEAM ACTION PLAN 2024-2029

In 2023, the Shady Grove Village HOA worked with the Environmental Finance Center (EFC) at the University of Maryland and its Sustainable Maryland (SM) program to establish a Green Team and adopt the SM Residential Action Framework. Sponsored by the Chesapeake Bay Trust with support from the City of Gaithersburg, this framework guides homeowners' associations through a process that increases their awareness of natural resources and watershed protection issues, educates their residents on the importance of community-based sustainability efforts, and encourages action.

Over the course of a year, the EFC project team led community members through a process of identifying and prioritizing shared areas of need, strategies for enhancing collective action, and opportunities for developing projects culminating in this Green Team Action Plan.

The Shady Grove Village Green Team Action plan is a living document that establishes priority actions for the next three years and serves as a tool for Green Team members to stay organized and track progress over time.



HIGHLIGHTS

LOCATION

Diamondback Drive and Story Drive, Gaithersburg, MD

POPULATION

172 households
~450 residents

GREEN TEAM MEMBERS

Paola Kochera
Gordana Gerskovic
Christine Mabon
Marilyn Ritzau

GREEN TEAM CONTACT

Paola Kocerha, Board Member
PKcerha@gmail.com

PARTNERS

Sustainable Maryland
Environmental Finance Center
City of Gaithersburg
Chesapeake Bay Trust



ENVIRONMENTAL
FINANCE CENTER



COMMUNITY ACTION

Establish/Grow a Green Team



Action Leads: Paola Kocerha

Target Year: 2023

Estimated Cost and Resource Needs:
Free

Potential Partners: Sustainable Maryland

Potential Resources:

- SM Framework presentation |
Sustainable Maryland |
<https://go.umd.edu/cyZ>

Progress and Implementation Notes:

- Completed in Fall 2023.

Conduct a Community Survey

Action Leads:

Target Year: Ongoing

Estimated Cost and Resource Needs:

Potential Partners:

Potential Resources:

- SM Survey Template | Sustainable Maryland | [Contact SM](#)

Progress and Implementation Notes:

- Identify opportunities to engage homeowners and renters in the identification of, prioritization of, and design of sustainability projects. Consider promoting the survey in newsletters, a community website, or door hangers.

Establish a Sustainability Resources Center

Action Leads:

Target Year:

Estimated Cost and Resource Needs:

Potential Partners:

Potential Resources:

Progress and Implementation Notes:

- Create a web page for residents with resources. This can be promoted on a community website, on bulletin boards throughout the community, and in newsletters.

Promote Maryland Green Schools

Action Leads:

Target Year:

Estimated Cost and Resource Needs: Free

Potential Partners: Surrounding HOA Green Teams

Potential Resources:

- MD Green Schools Program | Maryland Association for Environmental and Outdoor Education | <https://bit.ly/35AMhLu>

Progress and Implementation Notes:

- Fields Road Elementary, Ridgeview Middle, and Quince Orchard High Schools are all within 2 miles. The Green Team can reach out to school leadership and encourage their participation in MD Green Schools program, in collaboration with other HOA Green Teams. The Green Team can also work with local students to implement projects of mutual interest in the community.

Install a Little Free Library



Action Leads:

Target Year: Complete

Estimated Cost and Resource Needs:

Potential Partners:

Potential Resources:

- Little Free Library | <https://bit.ly/3wqGeo7>

Progress and Implementation Notes:

- The community currently has a little free library. Continue to monitor it and invest resources into it (if needed).

Track Diversity and Equity on Boards

Action Leads:

Target Year:

Estimated Cost and Resource Needs: Free

Potential Partners:

Potential Resources:

- Equity Workgroup | Choose Clean Water Coalition | <https://bit.ly/3unqsto>

Progress and Implementation Notes:

Coordinate with Neighboring HOAs on Green Initiatives

Action Leads:

Target Year:

Estimated Cost and Resource Needs:

Potential Partners:

Potential Resources:

- Creating Sustainable, Resilient, and Healthy HOAs | CAP Management Denver, CO | <https://bit.ly/3uV6mHd>

- Greening Your HOA | Piedmont Environmental Council | <https://bit.ly/33t1IVw>

- Green Condo and Homeowners Associations: Ideas on Green Initiatives from Across the Country | HOA Leader | <https://bit.ly/3sMCFoN>

Progress and Implementation Notes:

- Shady Grove 1, Shady Grove 2, Shady Grove 3, Park Summit, Timberbrook, and Vistas at Washingtonian Woods are all nearby. Consider partnering to pilot a compost pick up program with private collector, yard sales, earth day events, etc.

Partner with Nonprofits or Higher Education Institutions to Help Build Capacity and Provide Technical Assistance

Action Leads:

Target Year:

Estimated Cost and Resource Needs:

Potential Partners:

Potential Resources:

- Community Engagement and Restoration Mentorship Program | Chesapeake Bay Trust | <https://bit.ly/346360J>

Progress and Implementation Notes:

- Aim is to help build capacity and provide technical assistance (e.g., grant writing, research, etc.) For future opportunities to partner with UMD, Muddy Branch Alliance, Chesapeake Bay Trust, etc.

STORMWATER MANAGEMENT

Promote Stormwater Best Management Practices

Action Leads:

Target Year:

Estimated Cost and Resource Needs:

Potential Partners: City of Gaithersburg, Montgomery County Department of Environmental Protection (they have educational material that can be used)

Potential Resources:

- Stormwater 101 | Gaithersburg | <https://bit.ly/3gHCo14>

- Stormwater Pollution Prevention | Gaithersburg | <https://bit.ly/3Bft51z>
- Types of Stormwater Management Facilities | Montgomery County | <https://bit.ly/3JIHNqF>
- Rainscapes Reward Program | Gaithersburg | <https://bit.ly/3Hp6Okp>

Progress and Implementation Notes:

- This can be promoted on a community website, on bulletin boards throughout the community, and in newsletters.

Promote Stormwater Rebate Program Education and Outreach

Action Leads

Target Year:

Estimated Cost and Resource Needs:

Potential Partners:

Potential Resources:

- Rainscapes Reward Program | Gaithersburg | <https://bit.ly/3Hp6Okp>

Progress and Implementation Notes:

- This can be promoted on a community website, on bulletin boards throughout the community, and in newsletters.

Schedule Regular Community Cleanup Days

Action Leads:

Target Year: Existing, Ongoing

Estimated Cost and Resource Needs: «Est_Cost»

Potential Partners:

Potential Resources:

- How to Organize & Lead Your Clean Up | Alice Ferguson Foundation | <https://bit.ly/3HkJiEY>
- Community Clean Up Event Support | Gaithersburg | <https://bit.ly/3rlWMus>
- Outreach and Restoration Grant | Chesapeake Bay Trust | <https://bit.ly/3HwaZek>
- Community Engagement Mini Grant | Chesapeake Bay Trust | <https://bit.ly/3ojLvJe>

Progress and Implementation Notes:

- Continue monthly cleanups. This can be conducted with local volunteers and materials provided by the City. Students receive student service learning (SSL) hours.

Storm Drain Stenciling



Action Leads:

Target Year:

Estimated Cost and Resource Needs:

Potential Partners: City of Gaithersburg

Potential Resources:

- Storm Drain Stenciling | Chesapeake Bay Foundation |

<https://bit.ly/3J23WKJ>

- Storm Drain Art Project | Gaithersburg |

<https://bit.ly/3JcTtMD>

- Outreach and Restoration Grant | Chesapeake Bay

Trust | <https://bit.ly/3HwaZek>

- Community Engagement Mini Grant | Chesapeake Bay Trust <https://bit.ly/3ojLvJe>

Progress and Implementation Notes:

- There are several existing storm drains that would be suitable for murals/stenciling. The City can provide materials. An excellent outreach and education project, especially for children.

Develop a Stormwater Management Action Plan

Action Leads:

Target Year:

Estimated Cost and Resource Needs:

Potential Partners:

Potential Resources:

- Outreach and Restoration Grant | Chesapeake Bay Trust | <https://bit.ly/3HwaZek>

- Community Engagement Mini Grant | Chesapeake Bay Trust <https://bit.ly/3ojLvJe>

- Green Streets, Green Jobs, Green Towns (G3) (for project execution) | Chesapeake Bay Trust | <https://bit.ly/3qi85gX>

- Watershed Assistance Grant Program (for conceptual plans/designs) | Chesapeake Bay Trust | <https://bit.ly/3AWvU7S>

- Stormwater Action Plan: Mckenney Hills/Carroll Knolls Civic Association | Environmental Finance Center | <https://bit.ly/3rle4IR>

Progress and Implementation Notes:

- Sustainable Maryland can aid with the funding and development of a stormwater plan.

Conduct Pet Waste Management Outreach

Action Leads:

Target Year:

Estimated Cost and Resource Needs:

Potential Partners:

Potential Resources:

- Pet Waste Program Matrix | Sustainable Maryland | <https://bit.ly/3hyGUiS>
- Montgomery County's Pet Waste Management Program for HOAs | Montgomery County | <https://bit.ly/3AUyMIE>
- Outreach and Restoration grant (behavior change) | Chesapeake Bay Trust | <https://bit.ly/3HwaZek>

Progress and Implementation Notes:

- SM can pet waste yard signs in English and Spanish; additional signage and electronic outreach materials can be provided. This can be promoted on a community website, on bulletin boards throughout the community, and in newsletters.

Install Pet Waste Stations



Action Leads:

Target Year: Existing

Estimated Cost and Resource Needs:

Potential Partners:

Potential Resources:

- Montgomery County's Pet Waste Management Program for HOAs | Montgomery County | <https://bit.ly/3AUyMIE>

Progress and Implementation Notes:

- There are existing stations throughout the community. If needed, add new stations.

Adopt a Salt Reduction Plan

Action Leads:

Target Year

Estimated Cost and Resource Needs:

Potential Partners:

Potential Resources:

- Winter Salt Watch | Izaak Walton League of America | <https://bit.ly/3ANKxu1>
- Road Salt Moving Toward the Solution Report | Cary Institute | <https://bit.ly/34vc2MV>
- Road Salt Best Management Practices Fact Sheet | NH Department of Environmental Services | <https://bit.ly/3GmFQbw>
- Winter Maintenance Salt Application Guidelines and Calculator | Saltwise Wisconsin | <https://bit.ly/34Q83dQ>

Progress and Implementation Notes:

- Specific products and application procedures can help reduce the overuse of road salt. SM can provide the Maryland Department of the Environment's *Smart Salting Training Manual*

with recommended strategies. The City uses brine to pre-treat roads and reduce the amount of rock salt added after snow events. Work with SGV's landscaping contractor to develop a more environmentally friendly winter salting contract.

Install and Maintain Green Infrastructure



Action Leads:

Target Year: «

Estimated Cost and Resource Needs:

Potential Partners:

Potential Resources:

- City Support | Gaithersburg | [Contact SM](#)
- Outreach and Restoration grant | Chesapeake Bay Trust | <https://bit.ly/3HwaZek>
- Community Engagement Mini-grant | Chesapeake Bay Trust | <https://bit.ly/3ojLvJe>
- Green Streets, Green Jobs, Green Towns (G3) (for project execution)| Chesapeake Bay Trust <https://bit.ly/3qi85gX>

Progress and Implementation Notes:

- Includes bioswales, rain gardens, pervious hardscapes, green streets, rain barrels, etc. Several opportunities exist for small-scale stormwater infrastructure, including turf grass lawn areas, slopes, and landscaped beds. A significant opportunity area is the unused basketball court, which could be repurposed in several ways, to include stormwater management and revitalized public space for residents. Funding and technical assistance for projects can come from the City and non-profits.

ECO-FRIENDLY LANDSCAPING

Adopt and Promote Water-Efficient Landscaping Practices

Action Leads:

Target Year:

Estimated Cost and Resource Needs:

Potential Partners:

Potential Resources:

- City Support | Gaithersburg | [Contact SM](#)
- Rainscapes Reward Program | Gaithersburg | <https://bit.ly/3Hp6Okp>
- Outreach and Restoration Grant | Chesapeake Bay Trust | <https://bit.ly/3HwaZek>
- Community Engagement Mini Grant | Chesapeake Bay Trust <https://bit.ly/3ojLvJe>
- Green Streets, Green Jobs, Green Towns (G3) (for project execution) | Chesapeake Bay Trust | <https://bit.ly/3qi85gX> - Landscaping with Native Plants | MD Native Plant Society | <https://bit.ly/3LvJXG3>

- Native Plant Guide | Chesapeake Native Plant Center | <https://bit.ly/3Luq3Lw>

Progress and Implementation Notes:

- This can be promoted on a community website, on bulletin boards throughout the community, and in newsletters.

Conduct a Tree Canopy Inventory



Action Leads:

Target Year:

Estimated Cost and Resource Needs:

Potential Partners:

Potential Resources:

- Urban Tree Canopy Assessment | U.S. Department of Agriculture Forest Service | <https://bit.ly/3szEGon>
- Guide to Assessing Urban Forests | i-Tree | <https://bit.ly/3ssca88>
- Tree Canopy Assessment | City of College Park | <https://bit.ly/3sCwung>
- Tree Canopy Study | City of Salisbury | <https://bit.ly/3GIE0SO>

Progress and Implementation Notes:

- The tree canopy is aging out and there is a lot of Green Team interest in preserving older trees. Build on the successes and lessons learned of the grant funded project currently underway with Chesapeake Bay Trust funding. An inventory can be conducted with volunteers with cell phone apps.

Plant Trees

Action Leads:

Target Year:

Estimated Cost and Resource Needs:

Potential Partners:

Potential Resources:

- City Support | Gaithersburg | [Contact SM](#)
- Outreach and Restoration grant | Chesapeake Bay Trust | <https://bit.ly/3HwaZek>
- Community Engagement Mini Grant | Chesapeake Bay Trust | <https://bit.ly/3ojLvJe>
- Green Streets, Green Jobs, Green Towns (G3) | Chesapeake Bay Trust | <https://bit.ly/3qi85qX>
- Urban Trees Grant Program | Chesapeake Bay Trust | <https://bit.ly/3S6qerl>

Progress and Implementation Notes:

- Consider starting an annual Arbor Day or Earth Day planting with funding support from the Chesapeake Bay Trust. Consider partnering with neighboring HOA Green Teams.

WILDLIFE HABITAT

Coordinate an Annual Bio Blitz

Action Leads:

Target Year:

Estimated Cost and Resource Needs:

Potential Partners:

Potential Resources:

- BioBlitz Program | National Geographic Society | <https://bit.ly/48EvdA7>
- Setting Up Your iNaturalist Place for a BioBlitz | National Geographic Society | <https://bit.ly/4b2dbZX>

Progress and Implementation Notes:

- A fun and informative single day educational event, where residents survey the plants and animals in their community. Done with a phone app.

Plant Pollinator Gardens



Action Leads

Target Year:

Estimated Cost and Resource Needs:

Potential Partners:

Potential Resources:

- Lands Green Waters Clean | Muddy Branch Alliance | <https://bit.ly/3u5iLu3>

Progress and Implementation Notes:

- Possible locations on slopes and turf grass lawn areas throughout the community.

HEALTH AND WELLBEING

Promote Local Farmers Market

Action Leads:

Target Year:

Estimated Cost and Resource Needs:

Potential Partners:

Potential Resources:

- The Guide to Montgomery County Farmers Markets | Montgomery County | <https://bit.ly/3hwjydK>
- Farmers Markets | Gaithersburg | <https://bit.ly/3oKPU8n>

Progress and Implementation Notes:

- Promote the City's Farmers Markets to residents.

Install and Maintain a Community Garden

Action Leads:

Target Year:

Estimated Cost and Resource Needs:

Potential Partners:

Potential Resources:

- Why And How To Set Up An HOA Community Garden | HOA Management | <https://bit.ly/3GQzn9m>
- How to Start a Community Garden | Sustainable Maryland | <https://bit.ly/3sxNqny>
- Community Gardens | UMD Extension | <https://bit.ly/3lzPFVF>
- Community Gardening Policy Reference Guide | Public Health Law Center at Mitchell Hamline School of Law | <https://bit.ly/3qorKvZ>
- Experts Share Their Tips for Creating the Perfect Community Garden | Baltimore | <https://bit.ly/34B1GLw>

Progress and Implementation Notes:

- The Green Team is interested in doing either a community garden or a food forest at the intersection of Muddy Branch and Diamondback.

Plant a Food Forest

Action Leads:

Target Year:

Estimated Cost and Resource Needs:

Potential Partners:

Potential Resources:

- A walk in the edible woods | Chesapeake Bay Program | <https://bit.ly/3uzcHrH>
- Building a sustainable community food forest in our city | Mount Rainier | <https://bit.ly/3JaszVB>
- Edible Landscapes Are Un-Lawning America | Civil Eats | <https://bit.ly/3Mipl4I>
- HOA Permaculture | One Straw | <https://bit.ly/3sydlInE>
- 11 Essential Tips for Creating a Backyard Food Forest | Thriving Yard | <https://bit.ly/3pv8q55>

Progress and Implementation Notes:

- The Green Team is interested in doing either a community garden or a food forest at the intersection of Muddy Branch and Diamondback.

WASTE REDUCTION

Develop a Litter Prevention and Outreach Campaign

Action Leads:

Target Year:

Estimated Cost and Resource Needs:

Potential Partners:

Potential Resources:

- Litter Reduction Program | Montgomery County | <https://bit.ly/3Lhu8CQ>
- Keep Maryland Beautiful | MD Department of Housing and Community Development | <https://bit.ly/3U7OxB6>

Progress and Implementation Notes:

- This can be promoted on a community website, on bulletin boards throughout the community, and in newsletters.

Conduct Recycling Outreach and Education

Action Leads:

Target Year:

Estimated Cost and Resource Needs:

Potential Partners:

Potential Resources:

- Recycle Coach App | Gaithersburg | <https://bit.ly/3AZXIIh>
- Recycling & Bulk Pick Up | Gaithersburg | <https://bit.ly/33ec1wq>
- Recycling Service Summary | Gaithersburg | <https://bit.ly/3rL8AXH>
- Trash and Recycling Guide | Quince Orchard Park HOA | <https://bit.ly/3Bh4zqB>

Progress and Implementation Notes:

- This can be promoted on a community website, on bulletin boards throughout the community, and in newsletters.

Review Current HOA Purchasing Practices and Evaluate Opportunities for Reducing Consumption

Action Leads:

Target Year:

Estimated Cost and Resource Needs:

Potential Partners:

Potential Resources:

- Green Procurement and Environmentally Preferable Products (EPP) | MD Department of Environment | <https://bit.ly/3uwnq64>

Progress and Implementation Notes:

Adopt a Green Purchasing Policy for Goods and Services

Action Leads:

Target Year:

Estimated Cost and Resource Needs:

Potential Partners:

Potential Resources:

- Green Purchasing | Montgomery County | <https://bit.ly/3HBn5CF>

Progress and Implementation Notes:

- SM can provide a template.

CLEAN AND RENEWABLE ENERGY

Promote Energy Efficiency Practices

Action Leads:

Target Year:

Estimated Cost and Resource Needs:

Potential Partners:

Potential Resources:

- Home Performance Rebates | Pepco | <https://bit.ly/346LKAP>

- Residential Rebates & Discounts | Pepco | <https://bit.ly/3s8wL1e>

- HVAC Efficiency Rebates | Pepco | <https://bit.ly/3GqtU8K>

- Smart Thermostat Savings | Pepco | <https://bit.ly/34vbp5H>

- Energy Wise Rewards | Pepco | <https://bit.ly/34Nze99>

Progress and Implementation Notes:

- This can be promoted on a community website, on bulletin boards throughout the community, and in newsletters.

Promote Community Solar and Solar Co-Ops

Action Leads:

Target Year:

Estimated Cost and Resource Needs:

Potential Partners:

Potential Resources:

- MD Capital Area Solar Co-op | Solar United Neighbors | <https://bit.ly/3rkmlXn>

- Oaks Landfill, Montgomery County Community Solar Project | Neighborhood Sun | <https://bit.ly/3omcX9w>

- Community Solar Resources | Pepco | <https://bit.ly/3sbn95H>

- Community Solar Pilot Program | MD Public Service Commission | <https://bit.ly/3AWpDJ8>
- A Guide to Community Shared Solar: Utility, Private, and Nonprofit Project Development | Sun Shot | <https://bit.ly/34sFXFT>
- HOA Solar Action Guide | Solar United Neighbors | <https://bit.ly/3sfW7tW>
- Completed Co-ops in Maryland | Solar United Neighbors | <https://bit.ly/3uFM9oA>

Progress and Implementation Notes:

- This can be promoted on a community website, on bulletin boards throughout the community, and in newsletters.

Upgrade to LED Streetlights

Action Leads:

Target Year:

Estimated Cost and Resource Needs:

Potential Partners:

Potential Resources:

- LED Streetlight Conversions in Maryland & Virginia: Opportunities, Challenges, and Strategies in 2020 | MD Energy Administration | <https://bit.ly/3siexKA>
- LED Street Light Conversion | Gaithersburg | <https://bit.ly/3gspjs8>
- County's Streetlight Conversion Yields Financial Savings and Reduces GHG Emissions | Montgomery County | <https://bit.ly/3oqMxTO>

Progress and Implementation Notes:

TRANSPORTATION

Conduct a Walking Audit

Action Leads:

Target Year:

Estimated Cost and Resource Needs:

Potential Partners:

Potential Resources:

- Walk Audit Toolkit | Montgomery County | <https://bit.ly/3Jpk0pJ>
- Walk Audit Toolkit and Leader Guide | AARP | <https://bit.ly/3szwvZb>
- Get to Know Your Neighborhood with a Walk Audit | Safe Routes to School National Partnership | <https://bit.ly/3sxTN1y>

Progress and Implementation Notes:

Install Traffic Calming Measures

Action Leads:

Target Year:

Estimated Cost and Resource Needs:

Potential Partners: City of Gaithersburg

Potential Resources:

- Residential Traffic Calming | Montgomery County | <https://bit.ly/3ogyhNG>
- Traffic Calming Measures | Montgomery County | <https://bit.ly/3HnTUDf>
- Traffic Calming Measures for HOAs | Radarsign | <https://bit.ly/3L4FFW3>

Progress and Implementation Notes:

- Partner with the City and advocate for traffic calming. Identify locations to install speed tables and crosswalks. Determine if this is a potential Safe Routes to School project and therefore eligible for grant funding.

Install Bicycle Infrastructure Parking and Storage Infrastructure

Action Leads:

Target Year:

Estimated Cost and Resource Needs:

Potential Partners:

Potential Resources:

- Essential Bike Parking Guide | Association of Pedestrian and Bicycle Professionals | <https://bit.ly/3GmuyEp>
- Bike Parking Guide | Reliance Foundry | <https://bit.ly/3sa6DTu>

Progress and Implementation Notes:

- Green Team is interested in a bicycle shed (not racks).

Conduct a Transportation Assessment

Action Leads:

Target Year:

Estimated Cost and Resource Needs:

Potential Partners:

Potential Resources:

Progress and Implementation Notes:

- Given the community's proximity to schools and MARC/Metro stations, an assessment of residents' walking, cycling, car, bus and train travel would be useful. A basic survey, hardcopy and online versions, can be created by SM/UMD.

Install Electric Vehicle Charging Stations

Action Leads:

Target Year:

Estimated Cost and Resource Needs:

Potential Partners:

Potential Resources:

- Electric Vehicle Supply Equipment Rebate Program | MD Energy Administration | <https://bit.ly/3IUoQLB>

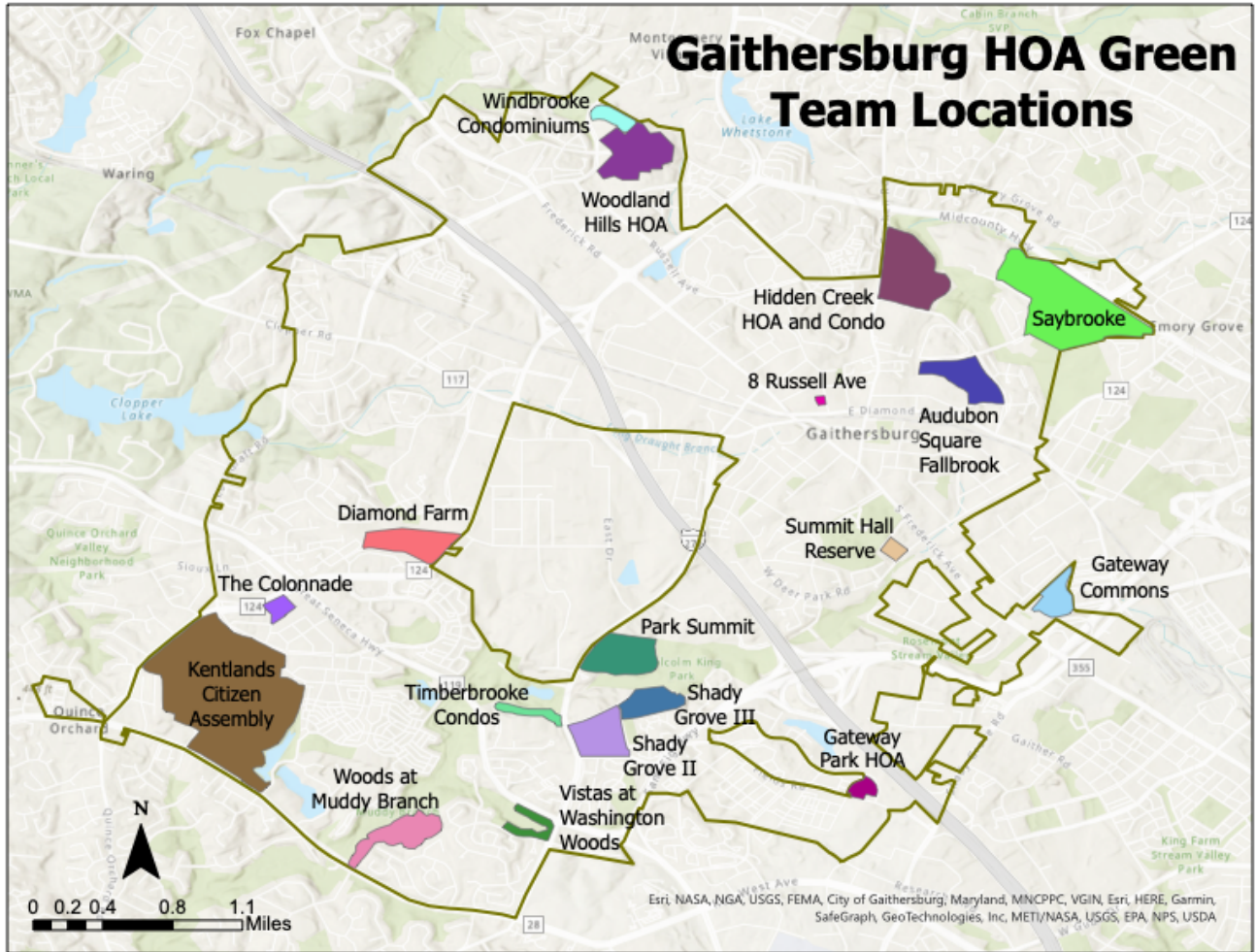
- EV Smart Program | Pepco | <https://bit.ly/3rlAVUj>

Progress and Implementation Notes:

- Explore potential locations for stations. Federal funding for stations is coming. Periodically check the Maryland Energy Administration website for funding sources and updates.

APPENDICES

Appendix A: Map of Gaithersburg HOA Green Teams





Appendix B: Summary of Recommended Funding Sources

Funding Source: Chesapeake Bay Trust

Chesapeake Bay Trust Planned Program Schedule - Fiscal Year 2024													
<p>In an effort to help applicants plan proposal development and submit applications to the Trust, a draft program schedule for the Trust's current fiscal year (FY) is provided. The Trust's FY is from July 1 to June 30. This calendar encompasses the general timeline (month) when we expect a Request for Proposals (RFP) to be available to the public and does not reflect when funding decisions will be made or when the applicant will be notified of the decision. RFP may be released at any time during the first month highlighted in green (unless noted otherwise) and the schedule is subject to change at any time. Review the program specific pages (program name is a link) for the most up to date information, and in-depth timeline information.</p>	Key												
	Program Open												
	Month Program Closes												
	Program Closed												
Program Name	2023						2024						
	Jul.	Aug.	Sep.	Oct.	Nov.	Dec.	Jan.	Feb.	Mar.	Apr.	May	Jun.	
Community Engagement & Restoration Mini Grants	Rolling while funds are available												
Keep Maryland Beautiful			Opens in September			Due							
Green Streets, Green Jobs, Green Towns							Opens in December		Due				
Outreach & Restoration	Opens in May	Due											
Urban Trees							Opens in December		Due				
Urban Trees Mini Grant Program	Rolling while funds are available												
Watershed Assistance Grant Program			Opens in September			Due							

Updated 10/12/2023

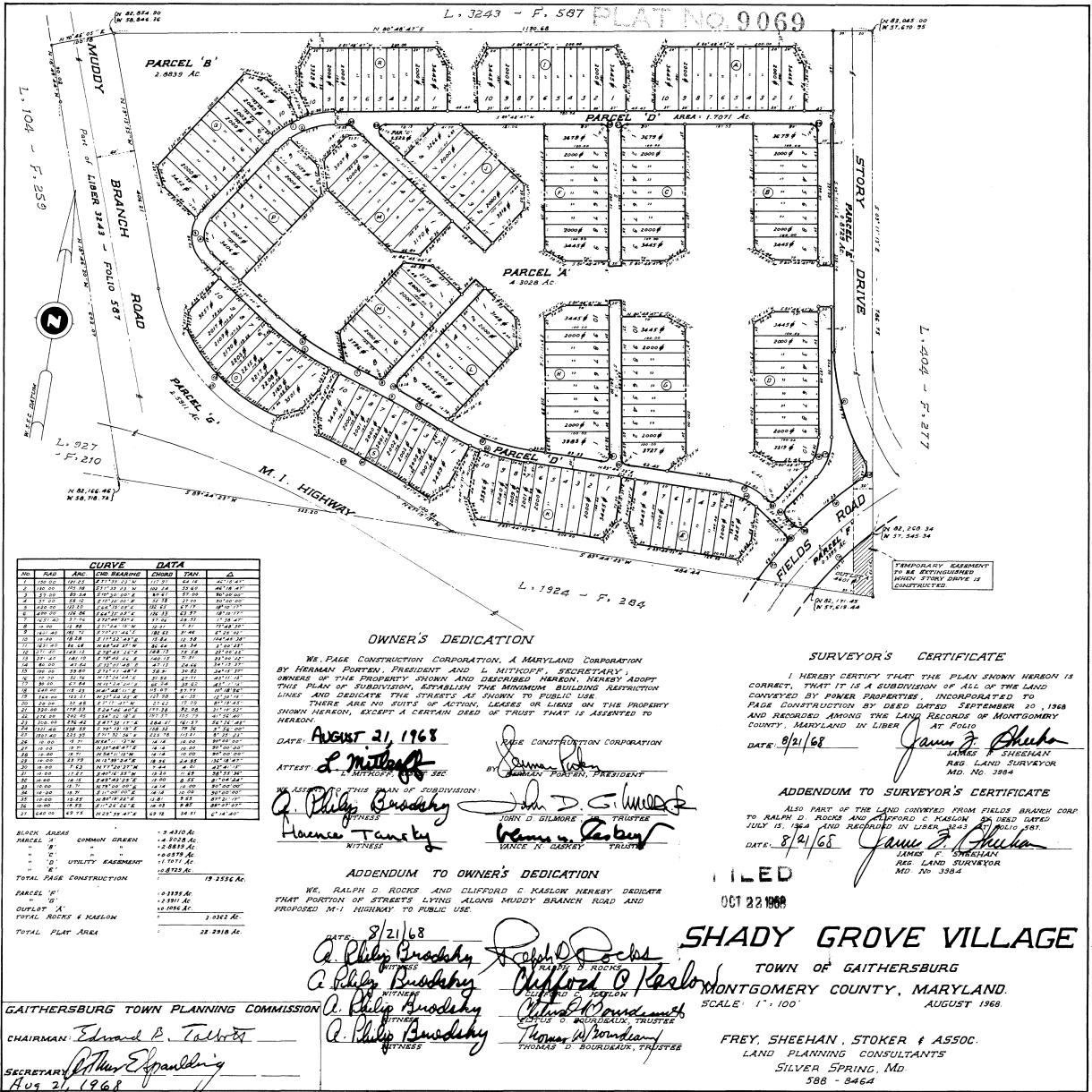
Appendix C: Community Survey Results

Survey: Gaithersburg Homeowners/Civic Association	
Name of Homeowners Association/Community Association	Shady Grove Village
Year the community was developed	1969
Contact person	Paola Kocerha
Email address	PKocerha@gmail.com
Phone number	301-704-5844
Street Address of Community (or nearest cross-streets)	Diamondback Dr and Story Dr
Website (link?)	http://www.shadygrovehoa.com/
Social media (Facebook, list serv, etc.?)	https://nextdoor.com/neighborhood/shadygrovillagemd--gaithersburg--md/?source=neighborhood_name
Newsletter (email, paper; how often?)	Yes, quaterly
Land (# of acres, if known?)	Not Known
Parks or Playgrounds (name? location?)	2 within the compounds
Common Buildings (number? uses?)	None
Total Number of Households?	172
Number of Single Family Homes?	0
Number of Townhouses or Apartments?	172
Approximate Total Number of Residents?	450
Facilities/Maintenance company (name, contact details?)	MTM MANAGEMENT ASSOCIATES, Potomac Garden Center
Trash Pickup? (municipality, County or contractor?)	Contractor,
Active Volunteers Committees (name(s)?)	Landscape Committee, Newsletter Commitee, Architecture Comittee
Nearby Streams or Waterways (name, if known?)	None
Pet Waste Stations (how many? locations?)	Yes, 3
Nearby Schools (names? grade levels? locations?)	ES: FIELDS ROAD, MS: RIDGEVIEW, HS: QUINCE ORCHARD
<i>Please return to Mike Hunninhake, Proaram Manaer, mikh75@umd.edu, 301-405-7956</i>	
 	ENVIRONMENTAL FINANCE CENTER

Appendix D: Shady Grove Village Map



Appendix E: Shady Grove Village Plat



NO.	BEARING	LENGTH	CURVE DATA	CHORD	BEARING	LENGTH
1	N 89° 48' 42" E	119.58		119.58	N 89° 48' 42" E	119.58
2	N 89° 48' 42" E	119.58		119.58	N 89° 48' 42" E	119.58
3	N 89° 48' 42" E	119.58		119.58	N 89° 48' 42" E	119.58
4	N 89° 48' 42" E	119.58		119.58	N 89° 48' 42" E	119.58
5	N 89° 48' 42" E	119.58		119.58	N 89° 48' 42" E	119.58
6	N 89° 48' 42" E	119.58		119.58	N 89° 48' 42" E	119.58
7	N 89° 48' 42" E	119.58		119.58	N 89° 48' 42" E	119.58
8	N 89° 48' 42" E	119.58		119.58	N 89° 48' 42" E	119.58
9	N 89° 48' 42" E	119.58		119.58	N 89° 48' 42" E	119.58
10	N 89° 48' 42" E	119.58		119.58	N 89° 48' 42" E	119.58
11	N 89° 48' 42" E	119.58		119.58	N 89° 48' 42" E	119.58
12	N 89° 48' 42" E	119.58		119.58	N 89° 48' 42" E	119.58
13	N 89° 48' 42" E	119.58		119.58	N 89° 48' 42" E	119.58
14	N 89° 48' 42" E	119.58		119.58	N 89° 48' 42" E	119.58
15	N 89° 48' 42" E	119.58		119.58	N 89° 48' 42" E	119.58
16	N 89° 48' 42" E	119.58		119.58	N 89° 48' 42" E	119.58
17	N 89° 48' 42" E	119.58		119.58	N 89° 48' 42" E	119.58
18	N 89° 48' 42" E	119.58		119.58	N 89° 48' 42" E	119.58
19	N 89° 48' 42" E	119.58		119.58	N 89° 48' 42" E	119.58
20	N 89° 48' 42" E	119.58		119.58	N 89° 48' 42" E	119.58
21	N 89° 48' 42" E	119.58		119.58	N 89° 48' 42" E	119.58
22	N 89° 48' 42" E	119.58		119.58	N 89° 48' 42" E	119.58
23	N 89° 48' 42" E	119.58		119.58	N 89° 48' 42" E	119.58
24	N 89° 48' 42" E	119.58		119.58	N 89° 48' 42" E	119.58
25	N 89° 48' 42" E	119.58		119.58	N 89° 48' 42" E	119.58
26	N 89° 48' 42" E	119.58		119.58	N 89° 48' 42" E	119.58
27	N 89° 48' 42" E	119.58		119.58	N 89° 48' 42" E	119.58
28	N 89° 48' 42" E	119.58		119.58	N 89° 48' 42" E	119.58
29	N 89° 48' 42" E	119.58		119.58	N 89° 48' 42" E	119.58
30	N 89° 48' 42" E	119.58		119.58	N 89° 48' 42" E	119.58
31	N 89° 48' 42" E	119.58		119.58	N 89° 48' 42" E	119.58
32	N 89° 48' 42" E	119.58		119.58	N 89° 48' 42" E	119.58
33	N 89° 48' 42" E	119.58		119.58	N 89° 48' 42" E	119.58
34	N 89° 48' 42" E	119.58		119.58	N 89° 48' 42" E	119.58
35	N 89° 48' 42" E	119.58		119.58	N 89° 48' 42" E	119.58
36	N 89° 48' 42" E	119.58		119.58	N 89° 48' 42" E	119.58
37	N 89° 48' 42" E	119.58		119.58	N 89° 48' 42" E	119.58
38	N 89° 48' 42" E	119.58		119.58	N 89° 48' 42" E	119.58
39	N 89° 48' 42" E	119.58		119.58	N 89° 48' 42" E	119.58
40	N 89° 48' 42" E	119.58		119.58	N 89° 48' 42" E	119.58
41	N 89° 48' 42" E	119.58		119.58	N 89° 48' 42" E	119.58
42	N 89° 48' 42" E	119.58		119.58	N 89° 48' 42" E	119.58
43	N 89° 48' 42" E	119.58		119.58	N 89° 48' 42" E	119.58
44	N 89° 48' 42" E	119.58		119.58	N 89° 48' 42" E	119.58
45	N 89° 48' 42" E	119.58		119.58	N 89° 48' 42" E	119.58
46	N 89° 48' 42" E	119.58		119.58	N 89° 48' 42" E	119.58
47	N 89° 48' 42" E	119.58		119.58	N 89° 48' 42" E	119.58
48	N 89° 48' 42" E	119.58		119.58	N 89° 48' 42" E	119.58
49	N 89° 48' 42" E	119.58		119.58	N 89° 48' 42" E	119.58
50	N 89° 48' 42" E	119.58		119.58	N 89° 48' 42" E	119.58
51	N 89° 48' 42" E	119.58		119.58	N 89° 48' 42" E	119.58
52	N 89° 48' 42" E	119.58		119.58	N 89° 48' 42" E	119.58
53	N 89° 48' 42" E	119.58		119.58	N 89° 48' 42" E	119.58
54	N 89° 48' 42" E	119.58		119.58	N 89° 48' 42" E	119.58
55	N 89° 48' 42" E	119.58		119.58	N 89° 48' 42" E	119.58
56	N 89° 48' 42" E	119.58		119.58	N 89° 48' 42" E	119.58
57	N 89° 48' 42" E	119.58		119.58	N 89° 48' 42" E	119.58
58	N 89° 48' 42" E	119.58		119.58	N 89° 48' 42" E	119.58
59	N 89° 48' 42" E	119.58		119.58	N 89° 48' 42" E	119.58
60	N 89° 48' 42" E	119.58		119.58	N 89° 48' 42" E	119.58
61	N 89° 48' 42" E	119.58		119.58	N 89° 48' 42" E	119.58
62	N 89° 48' 42" E	119.58		119.58	N 89° 48' 42" E	119.58
63	N 89° 48' 42" E	119.58		119.58	N 89° 48' 42" E	119.58
64	N 89° 48' 42" E	119.58		119.58	N 89° 48' 42" E	119.58
65	N 89° 48' 42" E	119.58		119.58	N 89° 48' 42" E	119.58
66	N 89° 48' 42" E	119.58		119.58	N 89° 48' 42" E	119.58
67	N 89° 48' 42" E	119.58		119.58	N 89° 48' 42" E	119.58
68	N 89° 48' 42" E	119.58		119.58	N 89° 48' 42" E	119.58
69	N 89° 48' 42" E	119.58		119.58	N 89° 48' 42" E	119.58
70	N 89° 48' 42" E	119.58		119.58	N 89° 48' 42" E	119.58
71	N 89° 48' 42" E	119.58		119.58	N 89° 48' 42" E	119.58
72	N 89° 48' 42" E	119.58		119.58	N 89° 48' 42" E	119.58
73	N 89° 48' 42" E	119.58		119.58	N 89° 48' 42" E	119.58
74	N 89° 48' 42" E	119.58		119.58	N 89° 48' 42" E	119.58
75	N 89° 48' 42" E	119.58		119.58	N 89° 48' 42" E	119.58
76	N 89° 48' 42" E	119.58		119.58	N 89° 48' 42" E	119.58
77	N 89° 48' 42" E	119.58		119.58	N 89° 48' 42" E	119.58
78	N 89° 48' 42" E	119.58		119.58	N 89° 48' 42" E	119.58
79	N 89° 48' 42" E	119.58		119.58	N 89° 48' 42" E	119.58
80	N 89° 48' 42" E	119.58		119.58	N 89° 48' 42" E	119.58
81	N 89° 48' 42" E	119.58		119.58	N 89° 48' 42" E	119.58
82	N 89° 48' 42" E	119.58		119.58	N 89° 48' 42" E	119.58
83	N 89° 48' 42" E	119.58		119.58	N 89° 48' 42" E	119.58
84	N 89° 48' 42" E	119.58		119.58	N 89° 48' 42" E	119.58
85	N 89° 48' 42" E	119.58		119.58	N 89° 48' 42" E	119.58
86	N 89° 48' 42" E	119.58		119.58	N 89° 48' 42" E	119.58
87	N 89° 48' 42" E	119.58		119.58	N 89° 48' 42" E	119.58
88	N 89° 48' 42" E	119.58		119.58	N 89° 48' 42" E	119.58
89	N 89° 48' 42" E	119.58		119.58	N 89° 48' 42" E	119.58
90	N 89° 48' 42" E	119.58		119.58	N 89° 48' 42" E	119.58
91	N 89° 48' 42" E	119.58		119.58	N 89° 48' 42" E	119.58
92	N 89° 48' 42" E	119.58		119.58	N 89° 48' 42" E	119.58
93	N 89° 48' 42" E	119.58		119.58	N 89° 48' 42" E	119.58
94	N 89° 48' 42" E	119.58		119.58	N 89° 48' 42" E	119.58
95	N 89° 48' 42" E	119.58		119.58	N 89° 48' 42" E	119.58
96	N 89° 48' 42" E	119.58		119.58	N 89° 48' 42" E	119.58
97	N 89° 48' 42" E	119.58		119.58	N 89° 48' 42" E	119.58
98	N 89° 48' 42" E	119.58		119.58	N 89° 48' 42" E	119.58
99	N 89° 48' 42" E	119.58		119.58	N 89° 48' 42" E	119.58
100	N 89° 48' 42" E	119.58		119.58	N 89° 48' 42" E	119.58

OWNER'S DEDICATION

WE, PAGE CONSTRUCTION CORPORATION, A MARYLAND CORPORATION BY HERMAN PORTEN, PRESIDENT AND L. MITKOFF, SECRETARY, OWNERS OF THE PROPERTY SHOWN AND DESCRIBED HERON, HEREBY ADOPT THIS PLAN OF SUBDIVISION, ESTABLISH THE MOVING BUILDING RESTRICTION LINES AND DEDICATE THE STREETS AS SHOWN TO PUBLIC USE.

THERE ARE NO SUITS OF ACTION, LEASES OR LIENS ON THE PROPERTY SHOWN HERON, EXCEPT A CERTAIN DEED OF TRUST THAT IS REFERRED TO HERON.

DATE: August 21, 1968

ATTEST: *L. Mitkoff* (Secretary), *Herman Porten* (President)

WE ASSURE TO THIS PLAN OF SUBDIVISION:

A. Philip Brodsky (Witness), *Haunce Tansky* (Witness), *John D. Gilmore* (Printer), *James O. Carlson* (Trustee)

SURVEYOR'S CERTIFICATE

I HEREBY CERTIFY THAT THE PLAN SHOWN HERON IS CORRECT, THAT IT IS A SUBDIVISION OF ALL OF THE LAND CONVEYED BY POWER PROPERTIES, INCORPORATED TO PAGE CONSTRUCTION BY DEED DATED SEPTEMBER 20, 1968 AND RECORDED AMONG THE LAND RECORDS OF MONTGOMERY COUNTY, MARYLAND IN LIBER 3843 AT FOLIO 587.

DATE: 8/21/68

James F. Sheehan (Surveyor)

ADDENDUM TO SURVEYOR'S CERTIFICATE

ALSO PART OF THE LAND CONVEYED FROM FIELDS BRANCH CORP TO RALPH D. ROCKS AND CLIFFORD C. KASLOW BY DEED DATED JULY 15, 1964 AND RECORDED IN LIBER 3843 AT FOLIO 587.

DATE: 8/21/68

James F. Sheehan (Surveyor)

ADDENDUM TO OWNER'S DEDICATION

WE, RALPH D. ROCKS AND CLIFFORD C. KASLOW HEREBY DEDICATE THAT PORTION OF STREETS LYING ALONG MUDDY BRANCH ROAD AND PROPOSED M-1 HIGHWAY TO PUBLIC USE.

DATE: 8/21/68

A. Philip Brodsky (Witness), *Ralph D. Rocks* (Witness), *Clifford C. Kaslow* (Witness), *Thomas D. Bourdeman* (Trustee)

FILED

OCT 23 1968

GAITHERSBURG TOWN PLANNING COMMISSION

CHAIRMAN: *Edward B. Talbot*

SECRETARY: *Arthur E. Spaulding*

Aug 21, 1968

SHADY GROVE VILLAGE

TOWN OF GAITHERSBURG

MONTGOMERY COUNTY, MARYLAND

SCALE 1" = 100'

AUGUST 1968

FREY, SHEEHAN, STOKER & ASSOC.

LAND PLANNING CONSULTANTS

SILVER SPRING, MD

588 - 8464