

University Hills Civic Association

GREEN TEAM ACTION PLAN 2023-2026

In 2022 University Hills Civic Association worked with the Environmental Finance Center (EFC) at the University of Maryland and its Sustainable Maryland (SM) program to adopt the SM Residential Action Framework. Sponsored by the Chesapeake Bay Trust with support from the Prince George's County Department of Environment, this framework guides homeowners' and civic associations through a process that increases their awareness of natural resources and watershed protection issues, educates their residents on the importance of community-based sustainability efforts, and encourages action.

Over the course of a year, the EFC project team led community members through a process of identifying and prioritizing shared areas of need, strategies for enhancing collective action, and opportunities for developing projects culminating in a Green Team Action Plan.

The University Hills Green Team Action plan is a living document that establishes priority actions for the next three years and serves as a tool for Green Team members to stay organized and track progress over time.



HIGHLIGHTS

LOCATION

University Hills Park, 3400 Stanford Street, Hyattsville, MD

POPULATION

400 households
~1,600 residents

GREEN TEAM ESTABLISHED 2023

GREEN TEAM MEMBERS

Ronald Pedone, Board President
Lindsay Booth
Sashaum Deprez
Laura Fischer
Jimmy McClellan

GREEN TEAM CONTACT

Ben Simazek, Board Member/City Council Member,
bensimasek7@gmail.com

PARTNERS

Sustainable Maryland
Environmental Finance Center
Prince George's County Department of Environment
Chesapeake Bay Trust



ENVIRONMENTAL FINANCE CENTER



COMMUNITY ACTION

Establish/Grow a Green Team

Action Leads:

Target Year: 2023

Estimated Cost and Resource Needs: Free

Potential Partners:

Potential Resources:

- SM Framework presentation | Sustainable Maryland | <https://go.umd.edu/cyZ>
- Outreach and Restoration grant | Chesapeake Bay Trust | <https://bit.ly/3HwaZek>
- Community Engagement Mini-grant | Chesapeake Bay Trust | <https://bit.ly/3ojLvJe>

Progress and Implementation Notes:

In process as of Fall 2022. SM provided a GT resolution from Diamond Farm HOA as a template (no formal resolution as of 9-6-22).

Develop a Green Team Action Plan

Action Leads:

Target Year: 2023

Estimated Cost and Resource Needs: Free

Potential Partners: University of Maryland Environmental Finance Center

Potential Resources:

- SM Green Team Action Plan Template Sustainable Maryland | [Contact SM](#)
- Advocacy & Stewardship Handbook | Audubon Naturalist Society | <https://bit.ly/3sfWzZ0>
- Homeowner's Guide to Sustainability | Angi | <https://bit.ly/3HZadqq>
- Environment | Community Associations | <https://bit.ly/35Izug8>

Progress and Implementation Notes:

In process as of Winter 2022-2023.

Conduct Sustainability Education and Outreach

Action Leads:

Target Year:

Estimated Cost and Resource Needs:

Potential Partners:

Potential Resources:

- HOA Covenants for Sustainability | Urban Land Magazine | <https://bit.ly/3HVGej7>
- Pheasant Run Homeowners Association Revitalizes Community and Engages Residents in Clean Water Actions | Chesapeake Bay Trust | <https://bit.ly/3shiosj>
- Partnership for Action Learning in Sustainability (PALS) | MNCPPC, MD | <https://bit.ly/3MV0Zxs>

Progress and Implementation Notes:

Residents can be informed via listserv and newsletter. Connect with SM for educational materials, if appropriate.

Promote/Partner with MD Green Schools

Action Leads:

Target Year:

Estimated Cost and Resource Needs:

Potential Partners:

Potential Resources:

- MD Green Schools Program | Maryland Association for Environmental and Outdoor Education | <https://bit.ly/35AMhLu>
- News Release: PGCPS Leads State in Green School Certifications | <https://bit.ly/3P2v9k9>

Progress and Implementation Notes:

Northwestern High School, Hyattsville Middle School, and University Park Elementary are nearby, and all are certified MD Green Schools. Consider them for project partners or to educate other nearby schools.

Commission a Public Art Installation

Action Leads:

Target Year:

Estimated Cost and Resource Needs:

Potential Partners:

Potential Resources:

- Art in Public Places | Prince George's County, MD | <https://bit.ly/3P1tUlg>
- Public Art | MNCPPC, MD | <https://bit.ly/3yiwXza>
- Public Art Commissioners | <https://bit.ly/3FuK2av>

Progress and Implementation Notes:

Potential mural or sculpture at Duck Pond Park. Ben has reached out to County Parks contacts (Lane Manor on the other side of the park/river and outside of the City) has a mural. Posts are already in the ground and the space is there for it.

Install a Little Free Library

Action Leads:

Target Year:

Estimated Cost and Resource Needs:

Potential Partners:

Potential Resources:

- How do I get my Homeowner's Association (HOA) to allow a Little Free Library? | Little Free Library | <https://bit.ly/3kJpI14>
- PG Books from Birth | <https://bit.ly/3vOtCGG>

Progress and Implementation Notes:

Track Diversity on Boards

Action Leads:

Target Year:

Estimated Cost and Resource Needs:

Potential Partners:

Potential Resources:

- Equity Workgroup | Choose Clean Water Coalition | <https://bit.ly/3unqsto>

Progress and Implementation Notes:

Partner with Nonprofits or Higher Education Institutions to Help Build Capacity and Provide Technical Assistance

Action Leads:

Target Year:

Estimated Cost and Resource Needs:

Potential Partners:

Potential Resources:

- Community Engagement and Restoration Mentorship Program | Chesapeake Bay Trust | <https://bit.ly/346360J>
- Community Partnership Grant (CPG) | Prince George's County, MD | <https://bit.ly/3FoC96D>

Progress and Implementation Notes:

Aims to help build capacity and provide technical assistance (e.g., grant writing, research, etc.). Identify future opportunities to partner with the University of Maryland, Sustainable Maryland, the Anacostia Watershed Society, Chesapeake Bay Trust, etc.

Coordinate with Neighboring HOA Green Teams on Green Initiatives

Action Leads:

Target Year:

Estimated Cost and Resource Needs:

Potential Partners:

Potential Resources:

- Greening Your HOA | Piedmont Environmental Council | <https://bit.ly/33t1IVw>
- Green Condo and Homeowners Associations: Ideas on Green Initiatives from Across the Country | HOA Leader | <https://bit.ly/3sMCFoN>
- "Go Green" Program | Forest Heights, MD - Official Website | <https://bit.ly/3MXmrlc>

Progress and Implementation Notes:

There are several new HOA/Civic Association Green Teams nearby, including Riverdale RRC, Calvert Hills Civic Association (College Park), Carole Highlands Neighborhood Association (Langley Park), plus municipal Green Teams in Hyattsville, Riverdale Park, College Park, and University Park. Already met the Langley Park Neighborhood Association President and open to collaboration. There are 10 new HOA/Civic Association Green Teams in the County. See map in Attachment A of this report. Contact information for each HOA with a Green Team in Prince George's County can be found on the [SM website](#).

STORMWATER MANAGEMENT

Promote Stormwater Best Management Projects and Rebate Program

Action Leads:

Target Year:

Estimated Cost and Resource Needs:

Potential Partners:

Potential Resources:

- Prince George's County Stormwater Stewardship Grant Program - Chesapeake Bay Trust | <https://bit.ly/3LT8SmV>
- Stormwater – People for Change Coalition | <https://bit.ly/3yjHnPf>
- Prince George's County Rain Check Rebate - Chesapeake Bay Trust | <https://bit.ly/3MHSQws>

Progress and Implementation Notes:

Residents can be informed via listserv and newsletter.

Schedule Regular Community Cleanup Days



Action Leads:

Target Year: Planned

Estimated Cost and Resource Needs:

Potential Partners: Anacostia Watershed Society

Potential Resources:

- How to Organize & Lead Your Clean Up | Alice Ferguson Foundation | <https://bit.ly/3HkJiEY>
- Volunteer Neighborhood Cleanup Program | Prince George's County, MD | <https://bit.ly/38eI4QB>

- Outreach and Restoration Grant Program | Chesapeake Bay Trust | <https://bit.ly/3HwaZek>
- Community Engagement Mini-grant | Chesapeake Bay Trust | <https://bit.ly/3ojLvJe>
- Comprehensive Community Cleanup Program | Prince George's County, MD | <https://bit.ly/3yWbH2Y>

Progress and Implementation Notes:

Neighbors of the Northwest Branch have committed to 4 cleanups per year. The Anacostia Watershed Society has Earth Day clean ups in the park.

Storm Drain Stenciling

Action Leads:

Target Year:

Estimated Cost and Resource Needs:

Potential Partners:

Potential Resources:

- Storm Drain Stenciling | Chesapeake Bay Foundation | <https://bit.ly/3J23WKJ>
- Volunteer Storm Drain Stenciling Program | Prince George's County, MD | <https://bit.ly/3yVDeRW>
- Storm Drain Stenciling Action Project | MD Department of Natural Resources | <https://bit.ly/3okXMx9>
- Outreach and Restoration grant | Chesapeake Bay Trust | <https://bit.ly/3HwaZek>
- Community Engagement Mini-grant | Chesapeake Bay Trust | <https://bit.ly/3ojLvJe>

Progress and Implementation Notes:

The County and the Chesapeake Bay Trust has a ton of free resources that you can use that SM can connect you with. An excellent outreach and education project, especially for kids.

Host Rain Barrel Workshops

Action Leads:

Target Year:

Estimated Cost and Resource Needs:

Potential Partners:

Potential Resources:

- Outreach and Restoration Grant Program | Chesapeake Bay Trust | <https://bit.ly/3HwaZek>
- Community Engagement Mini-Grant | Chesapeake Bay Trust | <https://bit.ly/3ojLvJe>

- Prince George's County Stormwater Stewardship Grant Program | Chesapeake Bay Trust | <https://ter.ps/12ed>
- Sample Rain Barrel Workshop Flyer | <https://bit.ly/3NDR7NL>

Progress and Implementation Notes:

Grants are available for this project.

Adopt-a-Stream



Action Leads:

Target Year:

Estimated Cost and Resource Needs:

Potential Partners:

Potential Resources:

- Adopt-a-Stream | Alice Ferguson Foundation | <https://bit.ly/3ukdc8S>
- Litter Reduction | Prince George's County, MD | <https://bit.ly/3wGGmQ2>
- Outreach and Restoration Grant Program | Chesapeake Bay Trust | <https://bit.ly/3HwaZek>
- Community Engagement Mini-Grant Program | Chesapeake Bay Trust | <https://bit.ly/3ojLvJe>

Progress and Implementation Notes:

Proximity to the Northwest Branch is both a stewardship opportunity and an educational opportunity (ex. water monitoring) for residents. Neighbors of the Northwest Branch do water monitoring in the summer and have committed to 4 cleanups per year.

Develop a Stormwater Management Action Plan

Action Leads:

Target Year:

Estimated Cost and Resource Needs:

Potential Partners:

Potential Resources:

- Stormwater Management Design Manual | <https://bit.ly/3yAs84X>
- Green Streets, Green Jobs, Green Towns (G3) (for project execution) | Chesapeake Bay Trust | <https://bit.ly/3qi85gX>
- Watershed Assistance Grant Program (for conceptual plans/designs) | Chesapeake Bay Trust | <https://bit.ly/3AWvU7S>
- Sample Stormwater Action Plan: Mckenney Hills/Carroll Knolls Civic Association | Environmental Finance Center | <https://bit.ly/3rle4IR>

- Prince George's County Stormwater Stewardship | Chesapeake Bay Trust | <https://bit.ly/3GtOrex>

Progress and Implementation Notes:

SM can potentially provide grant-funded assistance. Could build from ongoing projects.

Conduct Pet Waste Management Outreach

Action Leads:

Target Year:

Estimated Cost and Resource Needs:

Potential Partners:

Potential Resources:

- Pet Waste Program Matrix | Sustainable Maryland | <https://bit.ly/3hyGUiS>
- Pet Waste | Improving Water Quality in Your Community | <https://bit.ly/3yWFngd>
- Outreach and Restoration Grant Program (behavior change track) | Chesapeake Bay Trust | <https://bit.ly/3HwaZek>
- Scoop That Poop | Prince George's County, MD | <https://bit.ly/3LJUf4p>

Progress and Implementation Notes:

SM can provide pet waste yard signs and electronic outreach materials for Green Team to distribute to residents via listserv and newsletter. This Action advances the County's water quality goals.

Install Pet Waste Stations



Action Leads:

Target Year: Existing/Ongoing

Estimated Cost and Resource Needs:

Potential Partners:

Potential Resources:

- The Best 10 Pet Waste Removal Services in Prince George's County, MD | <https://bit.ly/3LGtuh5>
- Prince George's County Scoop the Poop Campaign | <https://go.umd.edu/pkm>
- Prince George's County Pet Waste Management Campaign | <https://go.umd.edu/pks>

Progress and Implementation Notes:

Two City-owned pet waste stations exist at Duck Pond Park and at the intersection of Claymore and Rosemary.

Adopt a Salt Reduction Plan

Action Leads:

Target Year:

Estimated Cost and Resource Needs:

Potential Partners: Landscaping contractor

Potential Resources:

- Maryland Reduces Use of Road Salts to Protect the Environment and Public Health | The Southern Maryland Chronicle | <https://bit.ly/3GiqZ3O>
- Outreach and Restoration grant | Chesapeake Bay Trust | <https://bit.ly/3HwaZek>
- Maryland Increases Alternatives to Road Salts to Advance Environmental and Transportation Goals | <https://bit.ly/3alyzyA>
- Salt Management Plan | MD State Highway Administration | <https://bit.ly/3aoCYAZ>

Progress and Implementation Notes:

This is a priority for the City and County. Specific products and application procedures can help reduce overuse of road salt. Can also be an outreach project to residents. The City currently uses road salt exclusively, and is investigating using brine.

Install and Maintain Green Infrastructure

Action Leads:

Target Year: Planned

Estimated Cost and Resource Needs:

Potential Partners:

Potential Resources:

- Approved Green Infrastructure Master Plan | MNCPPC, MD | <https://bit.ly/3PFR1H1>
- Implementing the Green Infrastructure Plan | MNCPPC, MD | <https://bit.ly/3MZI5Hn>
- Require Community-Wide Climate Resilient Green Infrastructure | Prince George's County Climate Action Plan | <https://bit.ly/3PEBQZZ>
- Prince George's County Stormwater Stewardship Grant Program | Chesapeake Bay Trust | <https://ter.ps/129v>
- Outreach and Restoration Grant Program | Chesapeake Bay Trust | <https://bit.ly/3HwaZek>
- Community Engagement Mini-grant | Chesapeake Bay Trust | <https://bit.ly/3ojLvJe>
- Green Streets, Green Jobs, Green Towns (G3) (for project execution) | Chesapeake Bay Trust | <https://bit.ly/3qi85gX>

Progress and Implementation Notes:

Examples include bioswales, rain gardens, pervious pavers, rain barrels, green streets, etc. Funding and technical assistance for projects can come from the County and non-profits.

ECO-FRIENDLY LANDSCAPING

Coordinate Invasive Species Removal



Action Leads:

Target Year:

Estimated Cost and Resource Needs:

Potential Partners:

Potential Resources:

- Prince George's County Invasive Plant Removal | Sierra Club | <https://bit.ly/38G99LH>
- Maryland Invasive Plants Prevention and Control | MD Department of Agriculture | <https://bit.ly/3INfDES>
- About Invasives | Maryland Native Plant Society

| <https://bit.ly/35BBSz7>

- Outreach and Restoration Grant Program | Chesapeake Bay Trust |

<https://bit.ly/3HwaZek>

- Community Engagement Mini-Grant Program | Chesapeake Bay Trust |

<https://bit.ly/3ojLvJe>

- Invasive Plant Species of Concern | MD Invasive Species Council |

<https://bit.ly/34sVgOU>

Progress and Implementation Notes:

There are invasive vines on trees in the Park. This is an issue at the homeowner scale as well. Are there opportunities to partner with or build on Dawn Taft's Aging in Place Program in Hyattsville?

Adopt and Promote Native Plant Landscaping Practices

Action Leads:

Target Year:

Estimated Cost and Resource Needs:

Potential Partners:

Potential Resources:

- Tree Planting and Gardening — Prince George's County, MD |

<https://bit.ly/3PF3Jq>

- Plant Trees | Prince George's County, MD | <https://bit.ly/38la91U>

- Prince George's County Stormwater Stewardship Grant Program | Chesapeake Bay Trust | <https://ter.ps/129v>
- Outreach and Restoration Grant Program | Chesapeake Bay Trust | <https://bit.ly/3HwaZek>
- Community Engagement Mini-grant | Chesapeake Bay Trust | <https://bit.ly/3ojLvJe>
- Landscaping with Native Plants | MD Native Plant Society | <https://bit.ly/3LvJXG3>
- Native Plant Guide | Chesapeake Native Plant Center | <https://bit.ly/3Luq3Lw>
- Plant Trees | Prince George's County, MD | <https://bit.ly/38Ia91U>

Progress and Implementation Notes:

Educate residents about City's Tree USA designation. Residents can be informed via listserv and newsletter.

Adopt and Promote Water-Efficient Landscaping Practices

Action Leads:

Target Year:

Estimated Cost and Resource Needs:

Potential Partners:

Potential Resources:

- EPA | Water-Efficient Landscaping | <https://bit.ly/38hGdcE>
- Outreach and Restoration Grant Program | Chesapeake Bay Trust | <https://bit.ly/3HwaZek>
- Community Engagement Mini-Grant Program | Chesapeake Bay Trust | <https://bit.ly/3ojLvJe>

Progress and Implementation Notes:

Residents can be informed via listserv and newsletter.

Promote No-Mow Zones

Action Leads:

Target Year:

Estimated Cost and Resource Needs:

Potential Partners:

Potential Resources:

- Outreach and Restoration Grant Program | Chesapeake Bay Trust | <https://bit.ly/3HwaZek>
- Community Engagement Mini-Grant Program | Chesapeake Bay Trust | <https://bit.ly/3ojLvJe>
- Benefits of a Low Mow or No Mow Zone | <https://bit.ly/3uF7jmN>

- Creating a Wild Backyard - Ground Covers | MD Natural Resources | <https://bit.ly/3sxlPCQ>

Progress and Implementation Notes:

This would require buy-in from adjacent landowners/homeowners and coordination with the City and/or County. Is there a possibility to do this on Wells adjacent to the green street?

Promote Conservation Landscaping Practices

Action Leads:

Target Year:

Estimated Cost and Resource Needs:

Potential Partners:

Potential Resources:

- Home Gardens | Prince George's Soil Conservation District | <https://bit.ly/38HhYoz>
- Outreach and Restoration Grant Program | Chesapeake Bay Trust | <https://bit.ly/3HwaZek>
- Community Engagement Mini-Grant Program | Chesapeake Bay Trust | <https://bit.ly/3ojLvJe>

Progress and Implementation Notes:

Residents can be informed via listserv and newsletter.

Conduct a Tree Canopy Inventory

Action Leads:

Target Year:

Estimated Cost and Resource Needs:

Potential Partners:

Potential Resources:

- Urban Tree Canopy Assessment | U.S. Department of Agriculture Forest Service | <https://ter.ps/12a9>
- Guide to Assessing Urban Forests | i-Tree | <https://bit.ly/3ssca88>
- Tree Canopy Assessment | City of College Park | <https://bit.ly/3sCwung>
- Tree Inventory: Prince George's County, MD, USA | PlanIT Geo™ | <https://bit.ly/3IHb5Go>
- Forest and Tree Canopy Data for Maryland | <https://bit.ly/3IXfi9n>

Progress and Implementation Notes:

This can be accomplished with volunteers using cell phone apps. Green Team should ensure that they coordinate with City's Tree Inventory. The City of Hyattsville has lost 30% of its canopy. This action could help inform how best to address trees that are aging out in addition to the anticipated new development

coming to the Clay property. There is interest in the neighborhood to help the City with what they are already doing. Use this as an opportunity for better coordination between the residents/homeowners and the City.

Plant Trees



Action Leads:

Target Year: Ongoing

Estimated Cost and Resource Needs:

Potential Partners: Anacostia Watershed Society

Potential Resources:

- Tree ReLeaf Grant Program | Prince George's County, MD | <https://bit.ly/3NyS84J>
- Prince George's County Stormwater Stewardship Grant Program | Chesapeake Bay Trust | <https://ter.ps/129v>
- Outreach and Restoration Grant Program | Chesapeake Bay Trust | <https://bit.ly/3HwaZek>
- Community Engagement Mini-Grant Program | Chesapeake Bay Trust | <https://bit.ly/3ojLvJe>
- Marylanders Plant Trees | <https://bit.ly/3ICIUcS>

Progress and Implementation Notes:

Consider hosting an annual Arbor Day/Earth Day planting with possible grant funding support. There are lots of resources available for trees. Plant River Birches in boggy spots in the Park.

WILDLIFE HABITAT

Coordinate an Annual Bio Blitz

Action Leads:

Target Year:

Estimated Cost and Resource Needs:

Potential Partners:

Potential Resources:

- BioBlitz Program | National Geographic Society | <https://bit.ly/3HIH9c5>
- Sponsorship Program | Chesapeake Bay Trust | <https://bit.ly/3sbCJy7>

Progress and Implementation Notes:

A fun and informative single day educational event, where residents survey the plants and animals in their community. Done with a phone app.

Plant Pollinator Gardens

Action Leads:

Target Year:

Estimated Cost and Resource Needs:

Potential Partners:

Potential Resources:

- Guide to Passing Wildlife-Friendly Property Maintenance Ordinances | National Wildlife Federation | <https://bit.ly/3hu5oK7>
- Pollinator Gardens | University of Maryland Extension | <https://bit.ly/3wKTp1O>
- Pollinator Packets | Prince George's Soil Conservation District | <https://bit.ly/3sRm2te>

Progress and Implementation Notes:

Host a Bat Box or Insect Hotel Workshop and/or Install Bat Boxes or Insect Hotels

Action Leads:

Target Year:

Estimated Cost and Resource Needs:

Potential Partners:

Potential Resources:

- Bat Houses | MD Department of Natural Resources | <https://bit.ly/3uJiuV>
- Bat Houses | Bat Conservation International | <https://bit.ly/3BcBenC>
- How to Build an Insect Hotel Webinar | Sustainable Maryland | <https://bit.ly/3oE47np>

Progress and Implementation Notes:

Opportunities exist at Duck Pond Park (coordinate with NCPPC) and with homeowners.

Conservation Easements

Action Leads:

Target Year:

Estimated Cost and Resource Needs:

Potential Partners:

Potential Resources:

- Agricultural Preservation| Perpetual Easements | PGSCD.org | Prince George's Soil Conservation District | <https://bit.ly/3GeZLuB>
- How are Conservation Easements preserved? | <https://bit.ly/3sQJtT9>

Progress and Implementation Notes:

Is this feasible in the areas adjacent to the park? Refer to the Adelphi Road Sector Plan completed by the County for guidance. Between Graduate Hills and

the park is under an easement. The City of Hyattsville is still negotiating with the Clay Property owners (13 acres).

HEALTH AND WELL-BEING

Promote Local Farmers Markets

Action Leads:

Target Year:

Estimated Cost and Resource Needs:

Potential Partners:

Potential Resources:

- Farmers Markets | MNCPPC, MD | <https://bit.ly/38NviaP>
- Farmers Markets Serving Prince George's County | <https://bit.ly/38lufJo>

Progress and Implementation Notes:

Residents can be informed about Hyattsville, Riverdale Park, and UMD/College Park markets via listserv and newsletter.

Plant a Food Forest

Action Leads:

Target Year:

Estimated Cost and Resource Needs:

Potential Partners:

Potential Resources:

- A walk in the edible woods | Chesapeake Bay Program | <https://bit.ly/3uzcHrH>
- Edible Landscapes Are Un-Lawning America | Civil Eats | <https://bit.ly/3Mipl4I>
- 11 Essential Tips for Creating a Backyard Food Forest | Thriving Yard | <https://bit.ly/3pv8q55>
- Urban Foraging Takes Off in Public Spaces on Route 1 | <https://bit.ly/3LHbsvg>

Progress and Implementation Notes:

Coordinate with NCPPC if location is Duck Pond Park. SM can connect the Green Team with nearby food forests in Hyattsville and Edmonston.

Promote Backyard Beekeeping

Action Leads:

Target Year:

Estimated Cost and Resource Needs:

Potential Partners:

Potential Resources:

- Urban Livestock | American Planning Association | <https://bit.ly/3oOaSDB>
- Zoning regulations for chickens and bees | County Health Rankings & Roadmaps | <https://bit.ly/3ooEuXW>
- Suburban Bees: How to Keep Bees in Residential Areas | Pollinator Network | <https://bit.ly/3GLouoW>

Progress and Implementation Notes:

Hyattsville currently does not permit backyard chickens but does allow for beekeeping.

WASTE REDUCTION

Develop a Litter Prevention Outreach Campaign

Action Leads:

Target Year:

Estimated Cost and Resource Needs:

Potential Partners:

Potential Resources:

- Litter Reductions Efforts — Prince George's County, MD | <https://bit.ly/3IMoYTX>
- Keep Maryland Beautiful | MD Department of Housing and Community Development | <https://bit.ly/3uAXITy>
- Implementing Trash Traps to Remove Litter in the Anacostia River Watershed in Maryland | OR&R's Marine Debris Program | <https://bit.ly/3wO7zPQ>

Progress and Implementation Notes:

A priority for the Green Team. Currently there are regularly occurring trash cleanups. On the 3rd Wednesdays of the month Jennifer Ridgeway leads a cleanup. Green Team will advocate for more trash cans along trail and stream. Residents can be informed via listserv and newsletter.

Conduct Recycling Outreach and Education

Action Leads:

Target Year:

Estimated Cost and Resource Needs:

Potential Partners:

Potential Resources:

- Keep Prince George's County Beautiful | Prince George's County, MD | <https://bit.ly/3MMFQFZ>
- Electronics Recycling (eCycling) in Maryland | <https://bit.ly/3LRWlz3>
- Sample Outreach Website | Trash and Recycling Guide | Quince Orchard Park HOA | <https://bit.ly/3Bh4zqB>

Progress and Implementation Notes:

Residents can be informed via listserv and newsletter.

Promote Community-Wide Composting**Action Leads:****Target Year:****Estimated Cost and Resource Needs:****Potential Partners:****Potential Resources:**

- Prince George's County Leads Maryland in Composting with Expansion of Food Waste Program | Sierra Club | <https://bit.ly/3PGygP4>
- Prince George's County Curbside Composting | <https://ter.ps/12em>

Progress and Implementation Notes:

Residents can be encouraged to participate in the County's weekly curbside food scrap pickup program. Hyattsville Public Works currently does the pickup. Hyattsville is looking at bins for compost and yard waste.

CLEAN AND RENEWABLE ENERGY

Promote Energy Efficiency Practices**Action Leads:****Target Year:****Estimated Cost and Resource Needs:****Potential Partners:****Potential Resources:**

- Home Performance Rebates | Pepco | <https://bit.ly/346LKAP>
- Residential Rebates & Discounts | Pepco | <https://bit.ly/3s8wL1e>
- HVAC Efficiency Rebates | Pepco | <https://bit.ly/3GqtU8K>
- Smart Thermostat Savings | Pepco | <https://bit.ly/34vbp5H>
- Energy Wise Rewards | Pepco | <https://bit.ly/34Nze99>
- Sustainable Energy | Prince George's County, MD | <https://bit.ly/3NA1ux1>
- Energy Efficiency Grant | Prince George's County, MD | <https://bit.ly/3wL4Yas>

Progress and Implementation Notes:

Residents can be informed via listserv and newsletter. Consider a wordpress website where everything can live in one place and point people towards it.

Promote Community and Solar Co-Ops**Action Leads:**

Target Year:

Estimated Cost and Resource Needs:

Potential Partners:

Potential Resources:

- MD Capital Area Solar Co-op | Solar United Neighbors | <https://bit.ly/3rkmlXn>
- CleanChoice Energy Community Solar Opens New Prince George's County Solar Farm | <https://bit.ly/3ab82Ur>
- Community Solar Resources | Pepco | <https://bit.ly/3sbn95H>
- Community Solar Pilot Program | MD Public Service Commission | <https://bit.ly/3AWpDJ8>
- A Guide to Community Shared Solar: Utility, Private, and Nonprofit Project Development | Sun Shot | <https://bit.ly/34sFXFT>
- HOA Solar Action Guide | Solar United Neighbors | <https://bit.ly/3sfW7tW>
- Completed Co-ops in Maryland | Solar United Neighbors | <https://bit.ly/3uFM9oA>

Progress and Implementation Notes:

Residents can be informed via listserv and newsletter.

Upgrade to LED Streetlights

Action Leads:

Target Year:

Estimated Cost and Resource Needs:

Potential Partners:

Potential Resources:

- LED Streetlight Conversions in Maryland & Virginia: Opportunities, Challenges, and Strategies in 2020 | MD Energy Administration | <https://bit.ly/3siexKA>
- Street Lights | Prince George's County, MD | <https://bit.ly/3yUKQEp>

Progress and Implementation Notes:

Advocate that the City upgrade and/or maintain to LED streetlights in the community.

TRANSPORTATION

Conduct a Walking Audit

Action Leads:

Target Year:

Estimated Cost and Resource Needs:

Potential Partners:

Potential Resources:

- Walk Audit Toolkit and Leader Guide | AARP | <https://bit.ly/3szwvZb>

- Get to Know Your Neighborhood with a Walk Audit | Safe Routes to School National Partnership | <https://bit.ly/3sxTN1y>

Progress and Implementation Notes:

Lack of sidewalks in key areas is an issue. Connectivity to destinations like shopping, Purple Line, Clay Property, etc. are longer term prospects.

Establish a Safe Routes to Schools Program

Action Leads:

Target Year:

Estimated Cost and Resource Needs:

Potential Partners:

Potential Resources:

- Safe Routes to School | PG County | <https://bit.ly/3LHqPE0>
- Safe Routes to School | MD Department of Transportation | <https://bit.ly/3HmXU6F>
- Prince George's County | Safe Routes Partnership | <https://bit.ly/3yUZGL7>

Progress and Implementation Notes:

The absence of sidewalks on entry streets is a safety issue.

Install Traffic Calming

Action Leads:

Target Year:

Estimated Cost and Resource Needs:

Potential Partners:

Potential Resources:

- Traffic Calming Measures for HOAs | Radarsign | <https://bit.ly/3L4FFW3>
- Maryland Department of Transportation State Highway Administration (MDOT SHA) | Safety Improvements | <https://bit.ly/3aorNIq>

Progress and Implementation Notes:

Green Team is interested in lobbying the City for more of these measures.

Promote Bike to Work Day

Action Leads:

Target Year:

Estimated Cost and Resource Needs:

Potential Partners:

Potential Resources:

- Bike To Work Day | Bike To Work Metro DC Network | <https://bit.ly/34d062r>
- Bike to Work Day | Prince George's County, MD | <https://bit.ly/39RiRuO>

Progress and Implementation Notes:

Residents can be informed via listserv and newsletter. This ties into a national initiative and Hyattsville does a great job of promoting this every year. Easy to piggyback off of what the City is already doing.

Install Electric Vehicle Charging Stations

Action Leads:

Target Year:

Estimated Cost and Resource Needs:

Potential Partners:

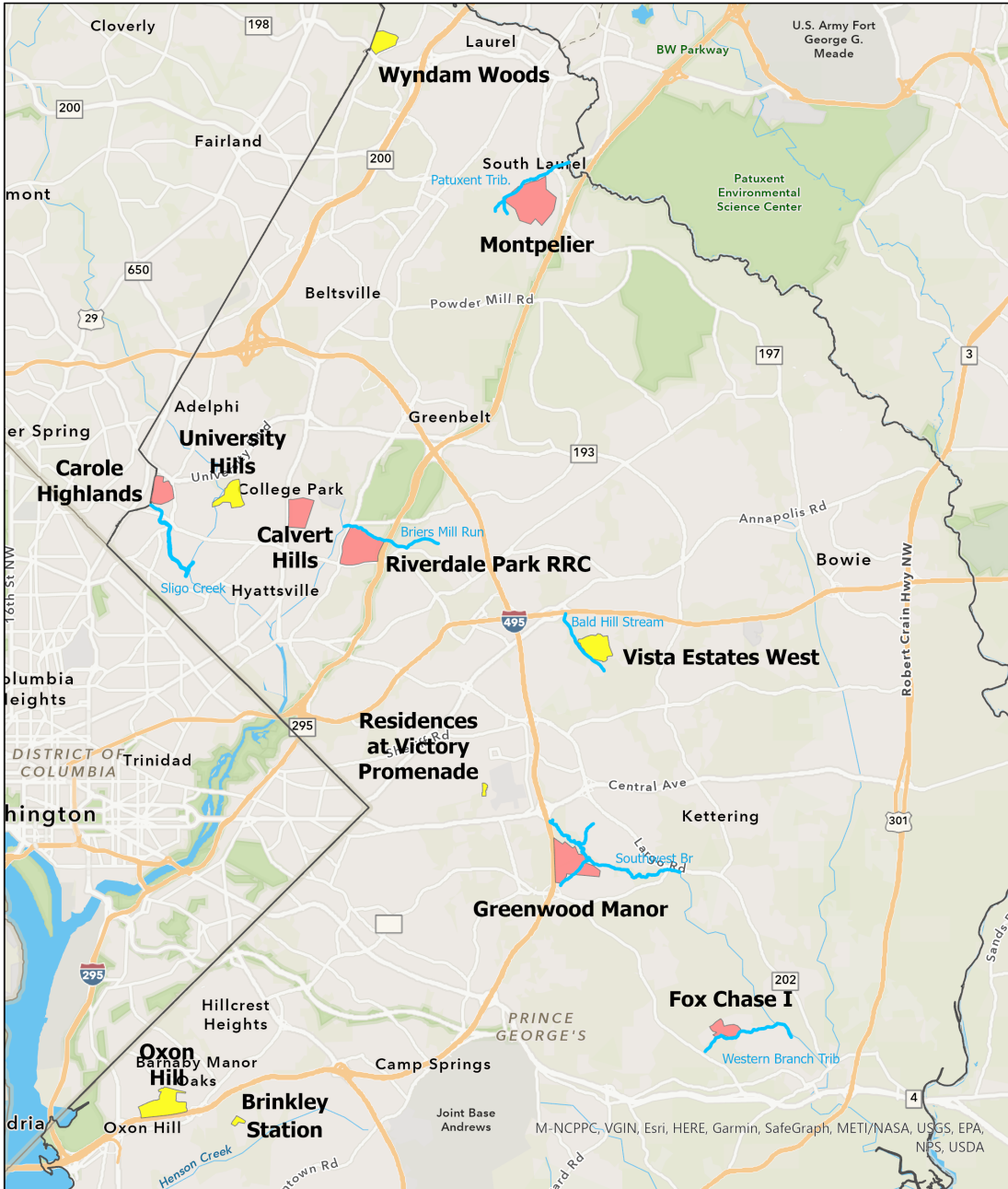
Potential Resources:

- Electric Vehicle Supply Equipment Rebate Program | MD Energy Administration | <https://bit.ly/3IUoQLB>
- EV Smart Program | Pepco | <https://bit.ly/3rIAVUj>
- Guidelines for Permitting Electric Vehicle Charging Stations | Prince George's County Department of Permitting, Inspections, and Enforcement (DPIE) <https://bit.ly/3NCErlc>

Progress and Implementation Notes:

Green Team can work with the City to identify best potential locations. This could include arks (Greenbelt does this), municipal buildings, community centers, etc.

APPENDIX A: HOA GREEN TEAMS IN PRINCE GEORGE'S COUNTY MAP



Prince George's County Green Teams

- Green Team Community Boundary
- Phase 1.0
- Phase 2.0
- Local Streams
- PG County Boundary

