

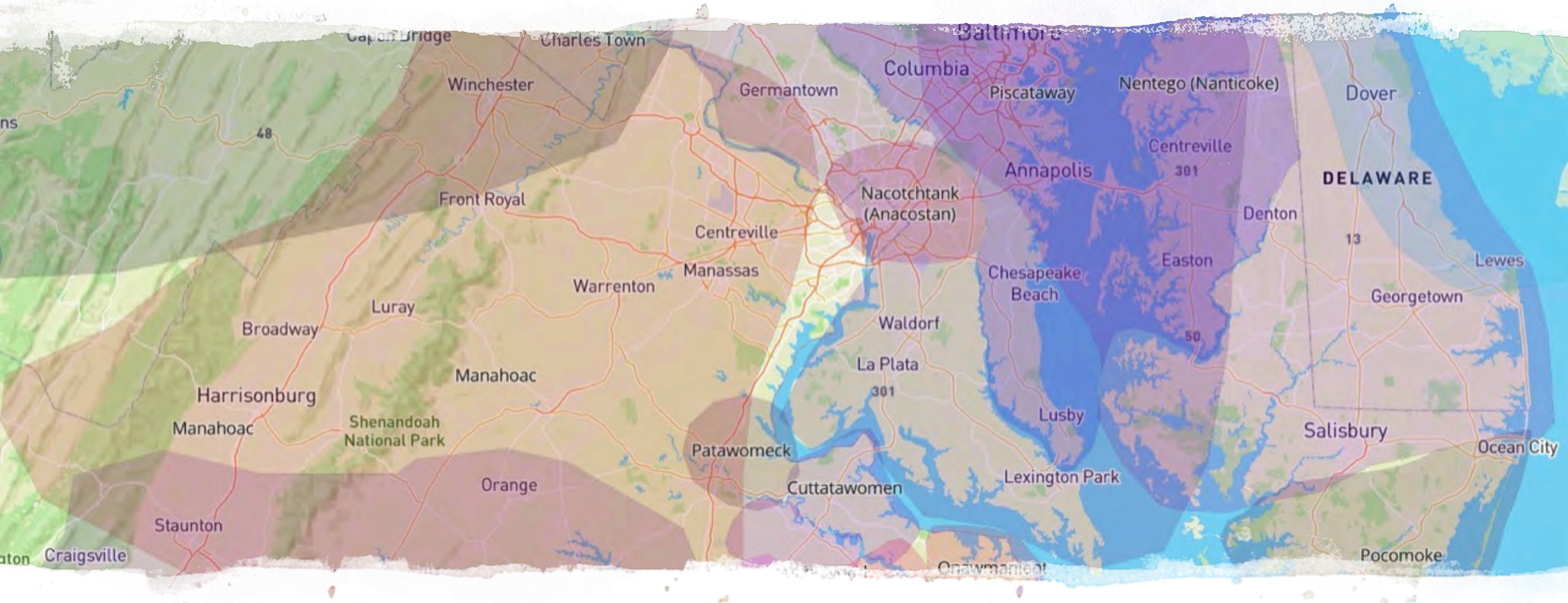
Gaithersburg Sustainability Summit

for Homeowners & Civic Associations

Thursday, January 26, 2023
Via Zoom



ENVIRONMENTAL
FINANCE CENTER



Gaithersburg's Native Land

Agenda

6:30 pm: Welcome from the City of Gaithersburg

6:40 pm: Sustainable Maryland Residential Action Framework

6:55 pm: A Green Team in Practice

7:25 pm: Stretch Break

7:30 pm: Building a Strong Network of Sustainability Champions

7:50 pm: Supporting Sustainability through Community-Driven Stormwater Action

8:10 pm: Expanding Green Teams in Gaithersburg

8:25 pm: Wrap Up/Next Steps





City of Gaithersburg

Welcome!

Council Vice President Lisa Henderson

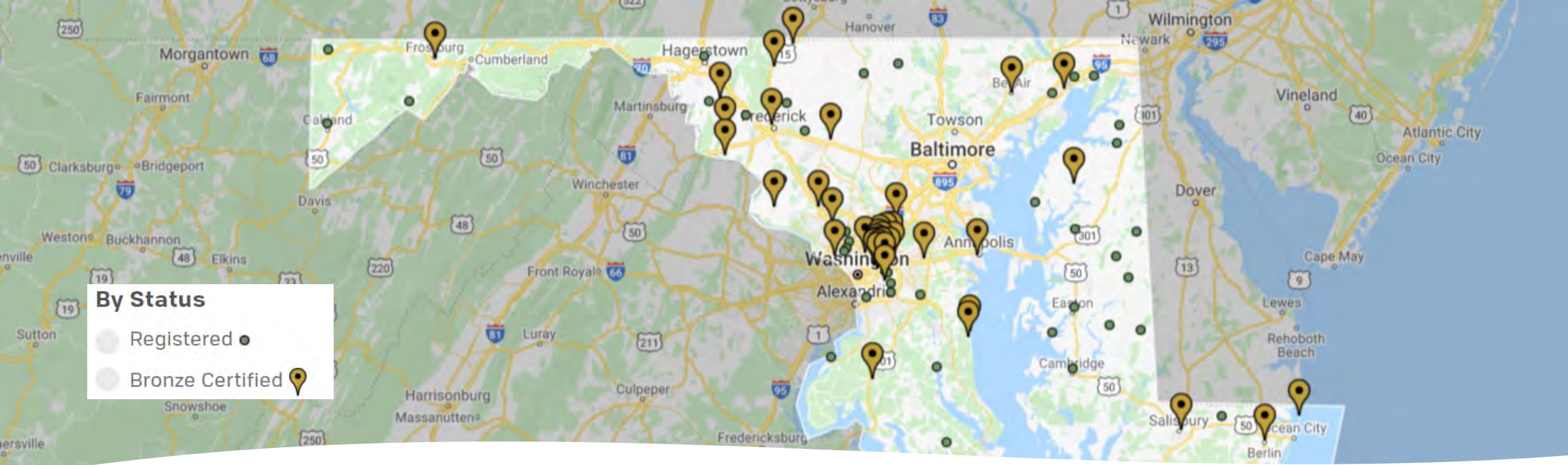
Sustainable Maryland's Residential Action Framework

ENGAGING MARYLAND'S
HOMEOWNERS AND CIVIC ASSOCIATIONS



ENVIRONMENTAL
FINANCE CENTER





- A **Free** and **Voluntary** program for communities that want to go green and save green
- We help communities:
 - Choose a direction for their sustainability efforts
 - Improve access to resources
 - Share successes with other communities
 - Track progress towards and gain recognition for achieving goals



SM Residential Action Framework

TAKING STEPS TOWARDS A MORE SUSTAINABLE FUTURE



1. Establish a Green Team

Present to the HOA

- You can have a formally adopted Green Team or an informal volunteer group

Build On Local Assets

- Engaged community members with their personal passion and/or professional expertise

Recruit Members

- Partnerships with local businesses, schools, congregations, non-profits, public health, arts

Collaborate with other jurisdictions

- Partner with local municipalities, and other neighboring communities



2. Review the SM Residential Action Menu

	A	B	C	D
16		Stormwater Management	Type	Resources
17	SM-1	Promote Stormwater Management Best Practices	Outreach	<ul style="list-style-type: none"> - Stormwater 101 Gaithersburg https://bit.ly/3gHCo14 - Stormwater Pollution Prevention Gaithersburg https://bit.ly/3Bft51z - Types of Stormwater Management Facilities Montgomery County https://bit.ly/3JIHNqF - Rainscapes Reward Program Gaithersburg https://bit.ly/3Hp6Okp
18	SM-2	Promote Stormwater Rebate Program Education and Outreach	Outreach	<ul style="list-style-type: none"> - Rainscapes Reward Program Gaithersburg https://bit.ly/3Hp6Okp
19	SM-3	Schedule Regular Community Cleanup Days	Event	<ul style="list-style-type: none"> - How to Organize & Lead Your Clean Up Alice Ferguson Foundation https://bit.ly/3HkJiEY - Community Clean Up Event Support Gaithersburg https://bit.ly/3rIWMus - City Cleanup Liability Release Form https://bit.ly/3rjhZ8m - Outreach and Restoration grant Chesapeake Bay Trust https://bit.ly/3HwaZek - Community Engagement Mini-grant Chesapeake Bay Trust https://bit.ly/3ojLvJe
20	SM-4	Storm Drain Stenciling	Event	<ul style="list-style-type: none"> - Storm Drain Stenciling Chesapeake Bay Foundation https://bit.ly/3J23WKJ - Storm Drain Art Project Gaithersburg https://bit.ly/3JcTtMD - Keep Montgomery County Beautiful Storm Drain Marking Program Montgomery County https://bit.ly/3ohqBKK - Storm Drain Stenciling Action Project MD Department of Natural Resources https://bit.ly/3okXMx9 - Outreach and Restoration grant Chesapeake Bay Trust https://bit.ly/3HwaZek - Community Engagement Mini-grant Chesapeake Bay Trust https://bit.ly/3ojLvJe
21	SM-5	Adopt-A-Stream	Project	<ul style="list-style-type: none"> - Adopt-a-Stream Alice Ferguson Foundation https://bit.ly/3ukdc8S - Adopt-a-Stream Team Leader Montgomery County Volunteer Center https://bit.ly/3L12MRo - Outreach and Restoration grant Chesapeake Bay Trust https://bit.ly/3HwaZek - Community Engagement Mini-grant Chesapeake Bay Trust https://bit.ly/3ojLvJe - Environmental Volunteer Opportunities Gaithersburg https://bit.ly/3rIWMus - City Cleanup Liability Form Gaithersburg https://bit.ly/3rjhZ8m
				<ul style="list-style-type: none"> - Rainscapes Reward Program Gaithersburg https://bit.ly/3Hp6Okp

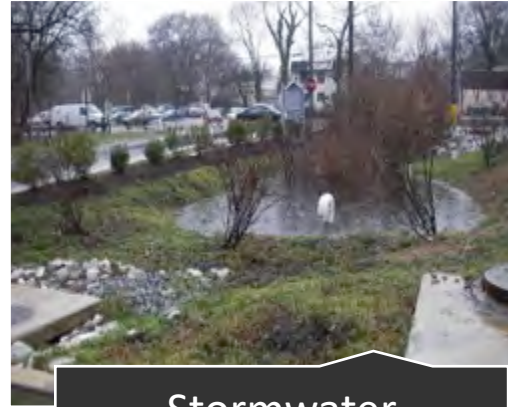
<https://sustainablemaryland.com/resources/homeowners-associations>

2. Review the SM Residential Action Menu

ACTION CATEGORIES



Community Action



Stormwater Management



Eco-Friendly Landscaping



Enhancing Wildlife Habitat



Health & Well-Being



Waste Reduction



Clean & Renewable Energy



Transportation

Community Action

Research, Planning, & Policies

- Conduct a Community Survey
- Develop a Green Team Action Plan

Outreach & Promotion

- Advertise Green Team
- Promote MD Green Schools

Projects & Programs

- Establish a Sustainability Resources Center
- Host Cultural Events
- Commit to Greening Events
- Commission a Public Art Installation

Stormwater Management

Research, Planning, & Policies

- Conduct a Flood Risk Assessment
- Develop a Stormwater Management Plan
- Adopt a Salt Reduction Plan
- Pass a Pet Waste Policy

Outreach & Promotion

- Promote Stormwater Management Best Practices
- Promote Water Conservation Practices
- Conduct Pet Waste Management Outreach
- Distribute Incentive Program Materials

Projects & Programs

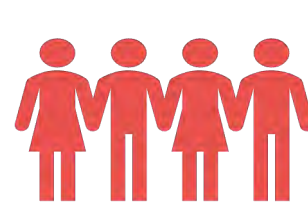
- Install Pet Waste Stations
- Adopt-A-Stream
- Storm Drain Stenciling
- Host a Stream/Community Cleanup
- Install and Maintain Green Infrastructure
- Host a Rain Barrel Workshops

3. Explore Potential Community Actions

Questions to keep in mind

1. What are our community's priorities and goals?
2. Are there any known issues?
3. What actions have already been initiated/completed?
4. Where are there areas of opportunity?
5. Who are the members of the community?
6. What do we control?
7. What local assets and resources can we build on?

Community Assets



Community
Members



Property



Policies



Outreach &
Communication



Services &
Procurement

4. Develop a Green Team Action Plan



4. Develop a Green Team Action Plan

SAMPLE ACTION PLANS

Summit Hall Reserve HOA GREEN TEAM ACTION PLAN 2022-2025

In 2021 Summit Hall Reserve HOA worked with the Environmental Finance Center (EFC) at the University of Maryland and its Sustainable Maryland (SM) program to adopt the SM Residential Action Framework. Sponsored by the Chesapeake Bay Trust with support from the City of Gaithersburg, this framework guides homeowners' and civic associations through a process that increases their awareness of natural resources and watershed protection issues, educates their residents on the importance of community-based sustainability efforts, and encourages action.

Over the course of a year, the EFC project team led community members through a process of identifying and prioritizing shared areas of need, strategies for enhancing collective action, and opportunities for developing projects culminating in a Green Team Action Plan.

The Summit Hall Reserve Green Team Action plan is a living document that establishes priority actions for the next three years and serves as a tool for Green Team members to stay organized and track progress over time.



HIGHLIGHTS

ESTABLISHED

LOCATION
Cobbler Place and Fairbanks Drive, Gaithersburg, MD

POPULATION
82 households
~175 residents

GREEN TEAM MEMBERS
Quinn Odorizzi, Property Manager
Jon Sundy, Board member
Jon Griffin, Board member

GREEN TEAM CONTACT
Quinn Odorizzi, Property Manager
QOdorizzi@smc-management.com

PARTNERS
Sustainable Maryland
Environmental Finance Center
City of Gaithersburg
Chesapeake Bay Trust



COMMUNITY ACTION

Establish a Green Team

Action Leads:
Target Year: Spring 2022
Estimated Cost and Resource Needs:
Potential Partners:
Potential Resources:

- SM Framework presentation | Sustainable Maryland
- Outreach and Restoration grant | Chesapeake Bay Trust | <https://bit.ly/3HwaZek>
- Community Engagement Mini-grant | Chesapeake Bay Trust | <https://bit.ly/3oJLVJe>

Progress and Implementation Notes:
Community participants agreed that a Green Team would be a useful addition to the community, as a sub-committee of the Board. They agreed to pass a formal designation of a Green Team, and will use the Diamond Farms resolution as a template.



Develop a Green Team Action Plan

Action Leads:
Target Year: Spring 2022
Estimated Cost and Resource Needs:
Potential Partners:
Potential Resources:

- SM Green Team Action Plan Template | Sustainable Maryland |
- Outreach and Restoration grant | Chesapeake Bay Trust | <https://bit.ly/3HwaZek>
- Community Engagement Mini-grants (for executing water-related projects) | Chesapeake Bay Trust | <https://bit.ly/3oJLVJe>
- Advocacy & Stewardship Handbook | Audubon Naturalist Society | <https://bit.ly/3sfWzZ0>
- Homeowner's Guide to Sustainability | Angi | <https://bit.ly/3H2adqg>
- Environment | Community Associations | <https://bit.ly/35szug8>

Progress and Implementation Notes:
SM will provide a draft action plan based on community meetings.





Local Environmental Groups & Green Initiatives (City of Gaithersburg, Maryland)

5. Take Action

- Coordinate with Board leadership, property managers, and local partners
- Tap into local resources
- Take a mix of easier short-term and more challenging long-term actions
- Celebrate wins big and small

Organic Lawn Care:

What the New Law Means for You and the Environment

by Daniel Dropt, Gaithersburg Sustainability Program Intern

The use of chemical pesticides and fertilizers poses a risk to environmental health. How could using these products on a small scale contribute to a large-scale problem, and why should you care?

What is the New Law?

Montgomery County's pesticide law restricts the use of "weed and feed" products and certain pesticides on private lawns, playgrounds, mulched recreation areas, and childcare facilities. The law aims to protect public health and minimize the potential pesticide hazard to people and the environment. Raising awareness and reducing pesticide use for cosmetic purposes is the goal. The law does not ban the sale of these products, which means you will still see restricted pesticides for sale. However, stores must place signage next to pesticides indicating which products are included in the ban. The law restricts most synthetic pesticides; organic pesticides are not affected. The City of Gaithersburg opted into the County's organic lawn care law effective December 2020.

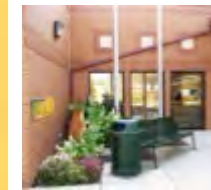
What's The Deal with Chemical Lawn Care Products?

Popular chemical lawn care products can contain ingredients harmful to both people and the environment. Glyphosate is one of those. Herbicides with glyphosate are useful for removing weeds but can have adverse side effects on our health, so much so that the World Health Organization has deemed the chemical a probable human carcinogen. Glyphosate bioaccumulates in nature, causing long-term damage to the environment. Through

bioaccumulation, man-made chemicals find their way into an organism's diet by seeping into its habitat and eventually into its food supply. Spraying glyphosate herbicide on plants will disrupt the digestive systems of bees and could contribute to the collapse of an entire honeybee colony. Rain ultimately washes the chemical down into streams and then the ocean, disrupting the reproductive cycles of fish. Thus the chemical continues to cause harm long after its usefulness is lost.

Synthetic fertilizers also pose a threat and can have long-term consequences on our environment. Developed with exactly one goal in mind, these fertilizers can grow plants quickly, and they do this job well. But despite having exactly what a plant needs to grow quickly, these fertilizer products do not always give a plant what it needs to grow healthy. Most synthetic fertilizers only contain a mixture of the limited nutrients of nitrogen, phosphorus, or potassium. As a result, soil often lacks other essential nutrients such as calcium, magnesium, and sulfur, causing plants to develop weak roots and stems.

Synthetic fertilizers also contribute to topical depletion. Like any other natural resource, topsoil is finite, meaning it will run out if not preserved. Estimates predict that at our current rate, we will



6. Connect with Peer Communities

BUILDING A STRONG NETWORK OF SUSTAINABILITY CHAMPIONS



Join Sustainable Maryland for a
Virtual Connection Hour
Thursday, March 3, 4:30-5:30pm



Dear Sustainable Maryland-ers,

Spring is on the horizon (with snow drops and daffodils and crocuses making an appearance this week), which made us realize it's been awhile since we've checked in with you.

Please join the SM Team today (Thursday, March 3), from 4:30-5:30pm, for a Virtual Connection Hour, and share what's inspiring or concerning you these days.

We want to know:

- what's on your mind?
- how we can help you?
- what you are planning in your community?

And we'll update you on the Sustainable Maryland funding bill (HB100/SB14) that is making it's way through the Maryland General Assembly this month, and how you can help make it a reality.

All are welcome - Green Team members, local elected officials, government staff, state and nonprofit representatives, and engaged citizens.



2nd Gaithersburg Homeowners/Civic Association Sustainability Summit

AGENDA

Location: Virtual - ZOOM: <https://usd.zoom.us/j/94997369475>
Date: Thursday, March 24, 2022, 6:30-8:30pm

- 6:30 - 6:40pm: **Welcome from the City of Gaithersburg**
Speaker: Mayor Jud Ashman
- 6:40 - 7:55pm: **Overview: Sustainable Maryland Residential Action Framework**
Speaker: Mike Humminghake, Sustainable Maryland
- 6:55 - 7:25pm: **Spotlight: A Green Team in Practice**
Speakers: Susan Pourian (Chair, Parkside Green - Parkside HOA, Bethesda) and Alex Stavitzky-Zeineddin (Green Team Chair, Kentlands Go Green, Kentlands Citizens Assembly)
- 7:25 - 7:30pm: **Stretch Break**
- 7:30 - 7:50pm: **Building a Strong Network of Sustainability Champions**
Breakout Rooms Discussions
- 7:50 - 8:10pm: **Supporting Sustainability through Community-Driven Stormwater Action**
Speaker: Michael Weyand, Watershed Restoration Specialist, City of Gaithersburg
- 8:10 - 8:25pm: **Moving Forward: Expanding Green Teams in Gaithersburg**
Speaker: Natalia Sanchez, Sustainable Maryland
- 8:25 - 8:30pm: **Wrap Up /Next Steps**



7. Reflect and Revisit the Process

- Track and measure progress towards Green Team Action Plan implementation
 - Communicate progress to Board leadership and community residents
- Update your Action Plan at least every three to five years
 - Survey community members to identify shifting priorities
 - Set aside time for a Green Team retreat to discuss progress and next steps
 - Adopt lessons learned from peer-to-peer community convenings
- Continue growing your Green Team
 - Recruit additional Green Team members



Taking Steps Towards a More Sustainable Future

Get Involved

Residential Associations

- Share this video with your Board and propose adopting the SM Residential Action Framework
- Download the SM Residential Action Menu
- Partner with neighboring communities
- Pursue funding and technical assistance opportunities

Counties and Cities

- Promote the SM Residential Action Framework to community associations
- Partner with Sustainable Maryland to launch a targeted outreach campaign
- Convene a Sustainability Summit for HOAs and Civic Associations

SM Residential Action Framework





Spotlight: A Green Team in Practice

Timberbrook HOA
Gateway Park HOA

Timberbrook Green Team



L to R: Bonnie Miller, David Worcester, Michael Dennis (HOA President), Michele Gunsior, Thérèse Worcester-Aubin. Absent: Amanda Pertzborn. 8 September 2021.

About Timberbrook

Address: Timberbrook Lane (private road off School Drive) 20878.

12 buildings of 14 units. 7 units each side of a central breezeway.

Location: Between Muddy Branch Road and Great Seneca Highway.

Access from Muddy Branch Road at School Drive.

Izaak Walton League National Headquarters (major conservation organization) just across Muddy Branch Stream to North.

National Institute of Standards and Technology neighbors Izaak Walton (N)

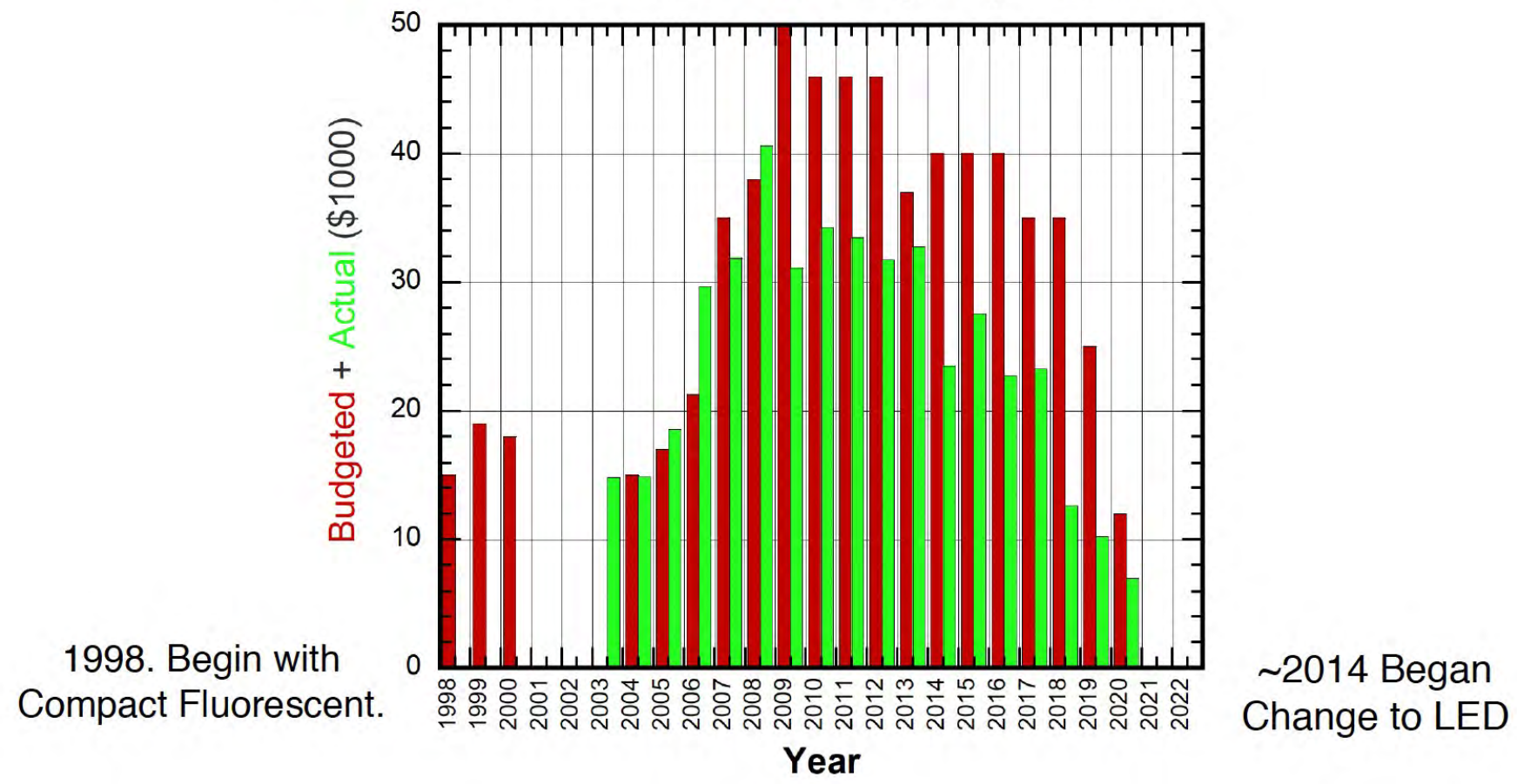
Green Team Action Projects

- 1) Clean & Renewable Energy, used Efficiently.
Electrical Usage: Breezeway & Parking area lights. Winter heating in electrical sheds.
- 2) Reduce use of Fossil Fuels (blowers, mowers).
Encourage Electrification of this equipment.
- 3) Transportation. Charging stations (in few years). Several Hybrid Cars here already. Bicycle Parking.
- 4) Encourage Energy Efficiency in 168 units. Lighting (easy but...) Gas Stoves—>Electric, Inductance
- 5) Water: WSSC water conservation. Storm Drain Water. Salt reduction.
- 6) Eco-Friendly Landscaping: Need so much mowed lawn?
- 7) Waste Reduction: Encourage unit owners. Composting.



Timberbrook Electricity Costs

1st Year of Full Occupancy to 2020.



1998. Begin with Compact Fluorescent.

~2014 Began Change to LED

Electricity is for Outside Lighting (Breezeways and Parking) and for heating electrical sheds in winter.
 Actual costs for 2021 and 2022 remained at ~\$7000.
 Further cost decrease is possible:
 Watts of LED bulbs decreasing, but nearing limit.
 Improve thermal Insulation in sheds.
 But Pepco cost per KWh is increasing.

Energy Efficiency in choice of 120V Light Bulbs.

Type of Light Bulb	Lumens per Watt	Lifetime	Efficiency	Cost
1) 40W Incandescent Bulb	12.5 to 16 Lm/W	~2,000 hours	~2%	
2) 9 to 32W Compact Fluorescent	45 to 75 Lm/W	~10,000 hrs	8 to 11.5%	
3) LED Typical 5 to 10 W Bulb	100 Lm/W	~15,000 hrs	15%	
2020 Timberbrook*: 400Lm/5W	80 Lm/W	15,000 hrs	~12%	\$1
2021 new model*	450Lm/4.3W 105 Lm/W	15,000 hrs	~16%	\$1
2022 newer yet*	450Lm/3.3W 136 Lm/W	25,000 hrs	~20%	\$1

According to 2022 Action by Federal Government, the sale of most Incandescent light bulbs will be banned by July 2023, as per Energy Independence & Security Act of 2007.

The Times are Changing.

Take Home Message: If still using Incandescent Bulbs, replace with LED Bulbs **ASAP**. Even if brand new! **Economics:** 40W bulb x 2,000 hrs life = 80 kWh. At \$0.15/kWh = \$12
Replacement now with 3.3W LED costs \$1 + 3.3 x 2 hrs x \$0.15 = \$1.99

* Data 2020 to 2022 from IKEA.

The Result:

Note: 27 bulbs
per building
= **324 bulbs.**



Green Team Action Projects

1) Clean & Renewable Energy, used Efficiently. Electrical Usage: Breezeway & Parking area lights.

Winter heating in electrical sheds.

**2) Reduce use of Fossil Fuels (blowers, mowers).
Encourage Electrification of this equipment.**

3) Transportation. Charging stations (in few years). Several Hybrid Cars here already. Bicycle Parking.

4) Encourage Energy Efficiency in 168 units.
Lighting (easy but...). Gas Stoves—>Electric, Inductance

**5) Water: WSSC water conservation. Storm Drain Water.
Salt reduction.**

6) Eco-Friendly Landscaping: Need so much mowed lawn?

7) Waste Reduction: Encourage unit owners. Composting.

Thoughts on Community Involvement

Communication. What is effective?

Members need to learn details of how things function.

Especially younger members.

Members also need to know benefits of action in units.

Many issues should not be left to contractors.

Role Models are needed.

A Most Appropriate Role Model

Basic Concepts of
what we do are
not new.

They are older than our
Nation & best exemplified
by Benjamin Franklin's
contributions at Philadelphia
from 1723. Just 300 years ago.
(A few: Invented a ventilated
street lamp & the Franklin
stove. Was against loss
of forests, waste going to
rivers and air pollution.
Founded the 1st American
Hospital, Lending Library &
Philosophical Society.
Founded the Philadelphia
Academy- which became
the University of Pennsylvania.



Thus, A Proposal for Timberbrook Communication:

The Green Timber Almanac

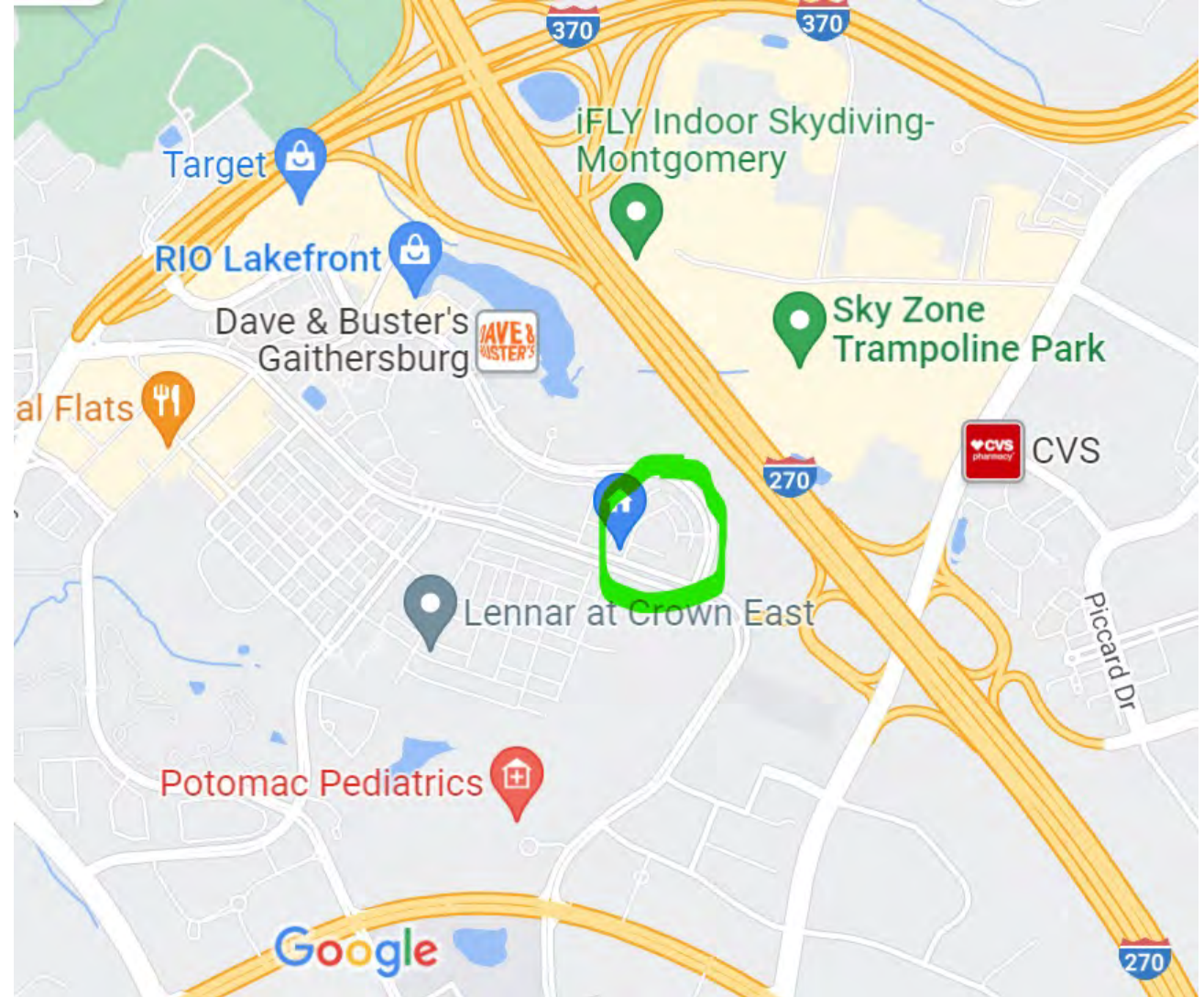
Containing useful green information & light anecdotes.

Such as:

“Ask not what your community can do for you, ask what you can do for your community.”

Gateway Park

Gateway Park is a community of 83 townhomes at the intersection of Fields Road and Washingtonian Boulevard that was established in 1998.



Goal: Greening Gateway Park

Consider greening all future maintenance and improvement projects.



Installed new LED streetlights

- Which are more efficient
- Produce a more consistent light
- Reduce up light pollution

Goal: Reduce Rainwater Run off

Reduce the amount of water going into the storm drain at the end of the slope. Address excessive mud and barren earth adjacent to the center courtyard park area.

- Install plants that will tolerate the shade and soil conditions to help slow the flow of water and increase water absorption.
- Consider installing rain barrels to capture roof runoff and slowly release the water.



Goal: Establish a Sustainability Resource Center

Develop website for the HOA to improve two-way communication between residents and board and provide sustainability resources. Potential projects:

- Recycling Outreach and Collection
- Litter Prevention and Outreach
- Salt use reduction
- Pet waste management outreach
- Coordinate with Neighboring HOAs
- Storm Drain Stenciling
- Host a rain barrel Workshop
- Monitor and remove invasive plant species.
- Tree Canopy Inventory and Maintenance plan.
- Encourage consumption of fresh produce
- Promote local farmers markets

Welcome to the website of the Gateway Park Homeowners' Association

Gateway Park is a community of 83 Townhouses in Gaithersburg, Maryland. It is part of the Washingtonian Cener Association which includes the RIO/Washingtonian development.

The Gateway Park HOA is responsible for the oversight of community amenities and services such as street lights, landscaping, trash removal, recycling collection, the tot-lot, paying dues to Washingtonian HOA, and maintaining community standards.

Board members volunteer their time in service of the community.

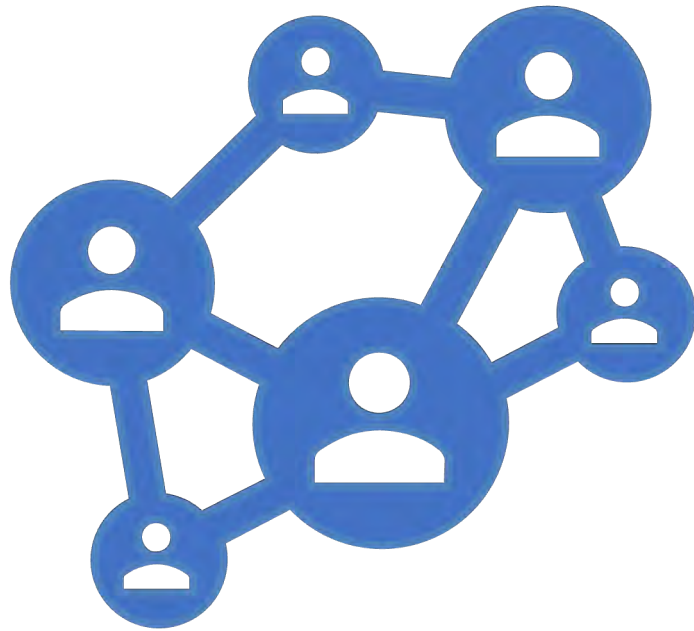
Owners are encouraged to participate in HOA meetings and otherwise work to enhance our community.



5-minute Break



Building a Strong Network of Sustainability Champions



Breakout Sessions

1. What are your goals for making your community more sustainable?
2. What training or resources do you need to achieve those goals?



G-PARC

Gaithersburg Parks, Arts and Recreation Corporation



Gaithersburg Sustainability Summit 2023



Dr. Michael G. Weyand (he/him/his)
Michael.Weyand@GaithersburgMD.gov
Stormwater Management Program
1/26/2023

What I Do.....

Michael.Weyand@GaithersburgMD.gov



Latest Stormwater & Environmental News



Green-In-Gaithersburg Newsletter

<https://www.gaithersburgmd.gov/government/enewsletters>

Environmental Services Website

<https://www.gaithersburgmd.gov/services/environmental-services>

Recycle Coach

<https://www.gaithersburgmd.gov/services/recycle-coach>

Projects in the City

<https://www.gaithersburgmd.gov/government/projects-in-the-city>



Email: Michael.Weyand@GaithersburgMD.gov



Local Environmental Groups & Green Initiatives (City of Gaithersburg, Maryland)

This list provides opportunities to build a better and more sustainable future for us all. Participating in environmental groups and other green initiatives helps address the global challenges we face, including clean water, inequality, climate change, environmental degradation, peace, and environmental justice. Learn about, contribute to, advocate for, and invest in local solutions that improve not only Gaithersburg, but our entire planet.

Climate Action & Affordable and Clean Energy

(Resilience Groups, Climate Planning, Energy Reduction, Carbon Footprint Mapping, Sustainable Solutions)

- [Gaithersburg Green Drinks](#)
- [My Green Montgomery](#)
- [Solar United Neighbors](#)

Life Below Water

(Stream Monitoring, Trash Cleanup Events, Invasive Species Removal, Tree Plantings)

- [Muddy Branch Alliance](#)
- [Seneca Creek Watershed Partners](#)
- [Watts Branch Watershed Alliance](#)
- [Interfaith Partners of the Chesapeake](#)
- [Alice Ferguson Foundation](#)
- [Izaak Walton League of America](#)
- [Defensores de la Cuenca](#)

Sustainable Cities & Communities

(Green Policy, Environmental Advocacy, Friends of Park Groups, Biking Paths, and Hiking Trails)

- [Gaithersburg Environmental Affairs Committee](#)
- [Gaithersburg Transportation Committee](#)
- [Gaithersburg Parks, Arts and Recreation Corp.](#)
- [Sierra Club](#)
- [Audubon Naturalist Society](#)
- [Friends of Seneca Creek State Park](#)
- [Citizen Climate Lobby](#)

Life on Land

(Heathy Soils, Native Plants, Pollinators, Composting, Organic Lawncare)

- [Bee City Committee](#)
- [Gaithersburg's Rainscapes Rewards Program](#)
- [Izaak Walton League of America](#)
- [Master Gardener Program U of MD Extension](#)
- [Montgomery County Soil Conservation District](#)
- [Institute for Local Reliance](#)
- [Friends of Seneca Creek State Park](#)

Quality Education

- [Educational Enrichment Committee](#)
- [SciTech2U](#)

Zero Hunger

- [Community Advisory Committee](#)
- [Montgomery County Food Council](#)
- [Manna Food Center](#)
- [Gaithersburg HELP](#)

Gender Equality & Reduced Inequalities

- [Montgomery County League of Women Voters](#)

No Poverty, Decent Work and Economic Growth

- [Community Advisory Committee](#)
- [Economic & Business Development Committee](#)

Local Green Neighborhood Groups & Partnerships for the Goals

- [Montgomery County Community Foundation](#)
- [Montgomery County Volunteer Center](#)
- Kentland's Go Green
- Saybrooke Green Team
- Diamond Farms/Hidden Creek Green Team
- St. Rosa Lima Green Team
- East Gaithersburg United



Do you know of other local organizations or environmental initiatives that should be on this list?

Please e-mail environment@gaithersburgmd.gov.

301-258-6370



gaithersburgmd.gov

Local Partnership Opportunities

<https://www.gaithersburgmd.gov/home/showpublisheddocument/8916/637539948539300000>



Host A Trash Cleanup

You, or anyone from the Gaithersburg community, can host a trash clean-up event anytime. To request supplies, just complete the online [Community Clean-Up](#) form. We provide gloves, bags, and trash grabbers for the event. We can also help with the collection of trash upon request. Feel free to have a cleanup at any of Gaithersburg's parks or neighborhoods. Use the [Park Finder Map](#) to find a location convenient for your group.

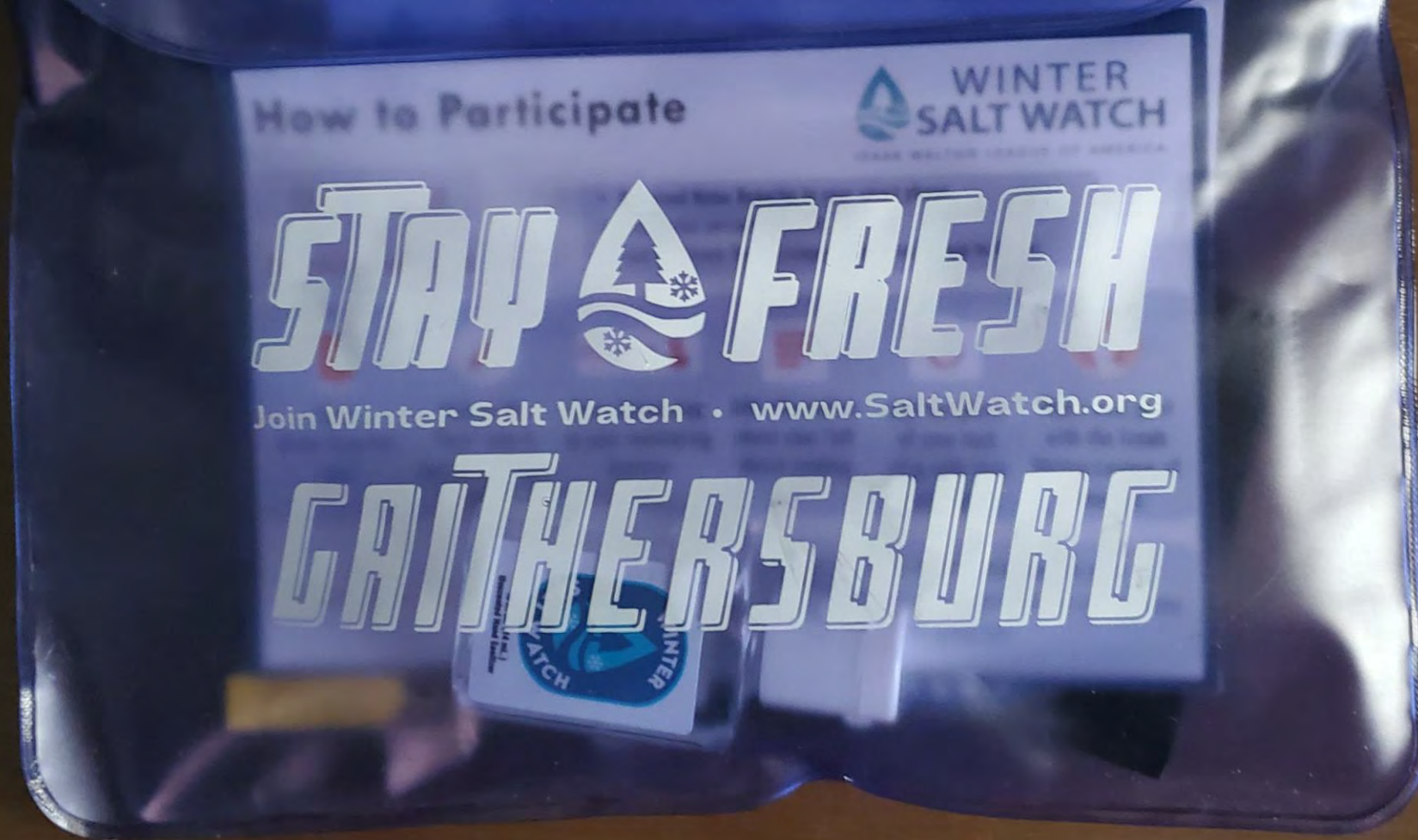
Please spread the word, and don't hesitate to email Environment@gaithersburgmd.gov with any questions.



Art of Trash Grabbing

<https://www.gaithersburgmd.gov/government/boards-committees-commissions/gaithersburg-parks-arts-and-recreation-corporation>





Salt Watch – Izaak Walton League

[HTTPS://WWW.IWLA.ORG/WATER/STREAM-MONITORING/SALT-WATCH/SALTWATCHGAITHERSBURG](https://www.iwla.org/water/stream-monitoring/salt-watch/saltwatchgaithersburg)

Frederick J. Felton Neighborhood Matching Grant Program

This program helps neighborhood associations make improvements in their communities by providing dollar-for-dollar matching grants.

Up to \$5,000

Open: April 1 -- mid-May

New projects such as lighting, installation of landscaping, tot lots, entrance features, other physical improvements, or neighborhood events.

<https://www.gaithersburgmd.gov/government/city-manager/frederick-j-felton-neighborhood-matching-grant-program>

Frederick J . Felton Neighborhood Matching Grant Resource Guide

This resource guide provides answers to many frequently asked questions that arise during the application, evaluation and post-award phases of the process.

Please keep this resource guide in a safe place as you will want to refer to it frequently.

What is the Frederick J. Felton Neighborhood Matching Grant and how do I apply?

Open to all homeowner associations, condominium associations, citizen associations or any group that represents a majority of residents in any given neighborhood, the dollar-for-dollar matching grant:

- Provides grants for new projects such as lighting, installation of landscaping, tot lots, entrance features and other physical improvements, or neighborhood events
- Applications are accepted annually
- Maximum grant(s) may not exceed a combined total of \$5,000 per fiscal year
- To apply, complete the application on the City's website - www.gaithersburgmd.gov, along with all required documents

What is the criteria on which my application evaluated?

- Provides clear program description, including detailed plans and itemized cost estimates
- Addresses identified challenge/opportunity
- Enhances public safety
- Has not received a cumulative total of \$10,000 in Matching Grants in last two fiscal years
- Application fully completed and received by deadline
- Meets purpose of grant program
- Proposed project/program budget provides reasonable and realistic costs
- Applicant is capable of providing 50% of funding
- Proposed project/program serves an impactful number of City residents

How do I request my funds when my project is complete?

- Submit itemized invoices/receipts that clearly match scope of work as described in application
- Provide proof of payment as grant is provided on a reimbursement basis

When does my grant expire?

The performance period is July 1 to May 31. All grant related work must start and end within this time frame. All receipts/invoices must be submitted by June 10, following the end of the performance period.

What expenses are considered ineligible?

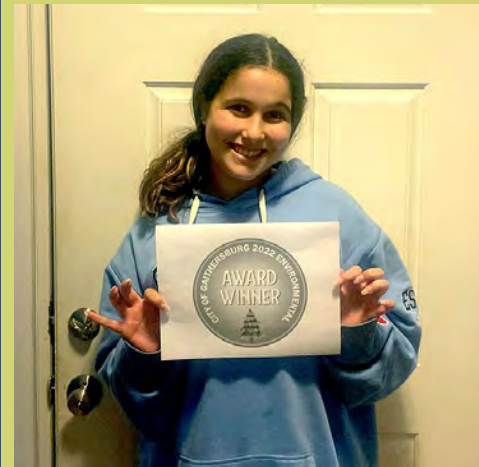
- Projects implemented and/or expenses incurred prior to the start of the performance period (July 1—May 31)
- Annuals (plants/flowers/shrubs)
- Watering of plants
- Tree removal, pruning, and/or stump grinding
- Routine maintenance and/or repair work
- Replacement of existing features (exceptions: community identification signs and fencing)
- Events, activities, programs, and/or services usually included in the organization's regular budget
- Operating expenses, including salaries and stipends

Do I need to submit a W-9?

✓ If your homeowners association is incorporated and has a tax id number, you need to submit a W-9.

Nominate Someone for Environmental Awards

<https://www.gaithersburgmd.gov/services/environmental-services/environmental-awards>





Frog Watch...

Frogs and toads are pollution sensitive organisms and are indicators of environmental health. Frogs and toads are both predators and prey, serving an important role in aquatic food webs. As predators, tadpoles help clean waterways by feeding on algae and adult frogs and toads feed on insects that can be pests and transmit diseases, such as mosquitoes. They also serve as a food source for many other organisms.

FrogWatch USA is a nation-wide volunteer frog and toad monitoring program. Montgomery County is a **local chapter** of the nationwide FrogWatch USA program. Volunteers are trained to identify frog and toad calls at a wetland site and to report their observations online. Data is compiled and analyzed to develop conservation strategies for frog and toad species and their habitat. Volunteers listened for these little buggers at 18 locations in 2022, with one of those locations being Malcolm King Park in Gaithersburg.

Check out the results here **[Montgomery County's 2022 FrogWatch story map.](#)**

Also, check out **[Call Descriptions for Frog & Toad Species in Montgomery County, Maryland.](#)**



potomac
conservancy

Seed Collection

Volunteers of all ages and backgrounds participate in Growing Native by collecting acorns and other native tree seeds across the region.



GROWING NATIVE

<https://potomac.org/growing-native>

Contact Director of Tree and Seed Programs Alexis Dickerson at 301-608-1188 x215 or dickerson@potomac.org.



Interfaith Partners for the CHESAPEAKE

Faithful Green Leaders
Training Program

https://www.interfaithchesapeake.org/faithful_green_leaders_training_program

Rainscapes Rewards

City of Gaithersburg Soil Test Rebate Application

Application for Single Family / Residential Townhouse

Healthy soil slows down runoff and reduces the amount of stormwater entering local streams. Collecting and storing rainwater where it falls on soil provides many benefits, including reduced water usage for irrigation and reduced chemical and nutrient pollution entering our waterways via runoff.

Rebate Terms

Program participants who follow the application guidelines are eligible to receive a **rebate of up to \$20 per soil test, with a maximum of two rebates per year for up to \$40 per property**. Program participants will be required to provide documentation showing the completion of their soil test before receiving a rebate.

Eligibility

- To participate, the subject property must be located within the jurisdictional boundaries of the City of Gaithersburg. If you are unsure about the location of your property, check the address lookup map [here](#) or call Environmental Services at 301-258-6330.
- Projects are not eligible if they are associated with permit approval requirements for new building construction, additions, or renovations.

Application Process and Requirements

1. Submit an application.
2. Receive City approval before purchasing the soil test.
3. Purchase soil test kit and complete the soil test.
4. Submit a reimbursement form along with soil test receipts and results.
5. Receive reimbursement check in the mail.

Please submit the completed application and required documentation to the following by mail or email. Contact Gaithersburg Environmental Services with any questions.

City of Gaithersburg – Environmental Services
Soil Testing Rebate
800 Rabbitt Road
Gaithersburg, MD 20878

environment@gaitersburgmd.gov



Rainscapes Rewards Program



Conservation Landscaping

\$1 per square foot rebate.

(250sqft Plant Bed = \$250 Rebate)



Rainwater Collection

\$1 per gallon of rain collected

(e.g. 50-gallon Rain Barrel = \$50 Rebate)



Soil Test Rebate

Up to \$20 rebate per test

(Max \$40 Per Household)





G-PARC

Gaithersburg Parks, Arts and Recreation Corporation

The Art of Clean Water



Storm Drain Art

STORM DRAIN ART CONTEST 2021

ENGLISH
 Artist: Kylie Wilbur
 Category: Save the Creatures of the Bay
 Title: Pollution Makes Me Crabby

This painting is based off the Maryland blue crab. The rainwater in Montgomery County eventually flows into the Chesapeake Bay. My storm drain would educate the public about the importance of not polluting because our storm drains impact the creatures of the Bay.

SPANISH
 Artista: Kylie Wilbur
 Categoría: Salva a las criaturas de la bahía
 Título: La contaminación me pone de mal humor

Esta pintura está basada en el cangrejo azul de Maryland. El agua de lluvia en el condado de Montgomery eventualmente fluye hacia la bahía de Chesapeake. Mi desagüe pluvial educará al público sobre la importancia de no contaminar porque nuestros desagües pluviales impactan a las criaturas de la Bahía.

FRENCH
 Artiste: Kylie Wilbur
 Catégorie: Sauvez les créatures de la baie
 Titre: La pollution me rend désagréable

Cette peinture est basée sur le crabe bleu du Maryland. L'eau de pluie du comté de Montgomery s'écoule finalement dans la baie de Chesapeake. Mon égout pluvial informerait le public sur l'importance de ne pas polluer parce que nos égouts pluviaux ont un impact sur les créatures de la baie.

KOREAN
 작가: 카일리 윌버 (16세) - 제이브 에코투성공회 학교
 문구: 댄 (Bay) 에 서식 생물을 구하기
 제목: 환경오염은 나를 괴롭게 해.

이 그림은 메릴랜드 꽃게를 모티브로 한 것입니다. 상고메리키운터의 빗물은 결국 체시피크 만에 흘러갑니다. 빗물 배수관 댄(Bay) 에 서식하는 생명체에게 영향을 주기 때문에 빗물 배수관을 오염시키지 않도록 사람들을 교육하는 것은 매우 중요합니다.

City of Gaithersburg
 The Gaithersburg Parks, Arts and Recreation Corporation (G-PARC) Arts & Culture Alliance
 City of Gaithersburg Stormwater Management and Cultural Events and Services Divisions

Adopt a Park

Become a Friends of Group for City Parks

Parks Alliance

Contact: Tracy Rouleau
(tracyrouleau@gmail.com) or
GPARC@gaitHERsburgmd.gov



Parks Finder Map

<https://maps.gaithersburgmd.gov/ParkFinder/>



Storm Drain T-shirt Printing



<https://www.gaithersburgmd.gov/government/boards-committees-commissions/gaithersburg-parks-arts-and-recreation-corporation>

GPARC@gaitersburgmd.gov





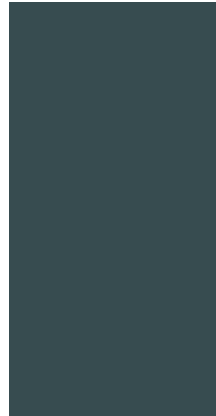
Mindful Salting

Using the right amount of salt to melt snow and ice for keeping the community safe and water clean.

Guiding Principles

- ❖ Critical to Public Safety
- ❖ Too Much of a Good Thing
- ❖ Timely & Accurate

[HTTPS://WWW.IWLA.ORG/WATER/STREAM-MONITORING/SALT-WATCH/SALTWATCHGAITHERSBU
RG](https://www.iwla.org/water/stream-monitoring/salt-watch/saltwatchgaitthersburg)



Nature Play Space

Urban Ecosystem Restorations

Lakelands Community Association (LCA)

<https://www.urbanecosystemrestorations.org/short-street-nature-play>



Open May 1st – August 10th

<https://cbtrust.org/grants/outreach-and-restoration/>

Track 1: Outreach: Raise public awareness and engagement in the challenges and solutions to restoring Gaithersburg's natural resources: local green spaces, parks, streams, rivers, and bays. (**Funding up to \$30,000**)

Track 2: Restoration: Engage people in on-the-ground community-based projects that reduce polluted runoff and benefit communities. (**Up to \$50,000**)

Track 3: Outreach and Restoration: Combine the goals for both tracks above to achieve increased outcomes. (**Up to \$75,000**)

Contact Information

Environmental Affairs Committee

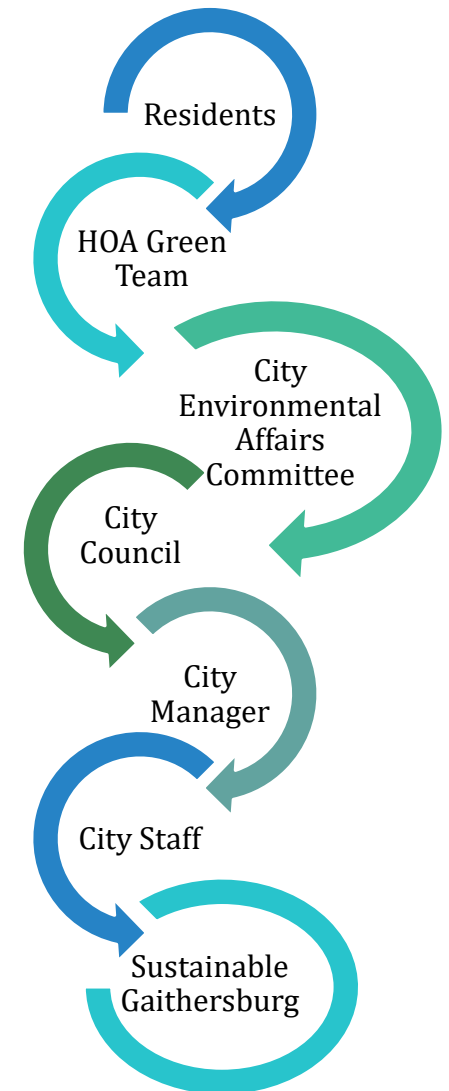
Meets: Monthly; 2nd Tuesday, except April @ 7pm

Watch Online: <https://www.gaithersburgmd.gov/government/public-meeting-information>

•Environmental Services

- 301-258-6370
- environment@gaithersburgmd.gov
- Public Works
800 Rabbitt Road
Gaithersburg, MD 20878
- Monday – Friday, 8 AM – 5 PM

Dr. Michael G. Weyand (he/him/his)
Michael.Weyand@GaithersburgMD.gov
Stormwater Management Program



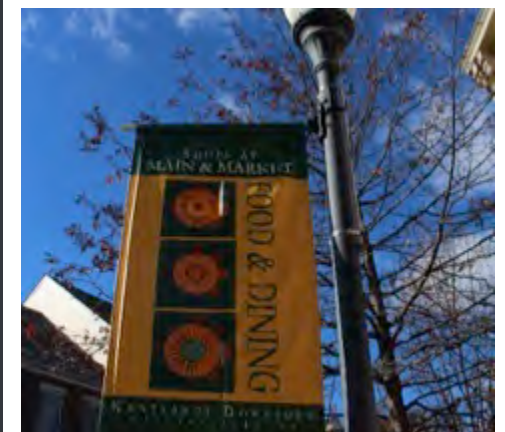
Expanding Green Teams in Gaithersburg



- Sustainable Maryland has been funded for Phase 4.0 (2023-2024), including 3 new communities

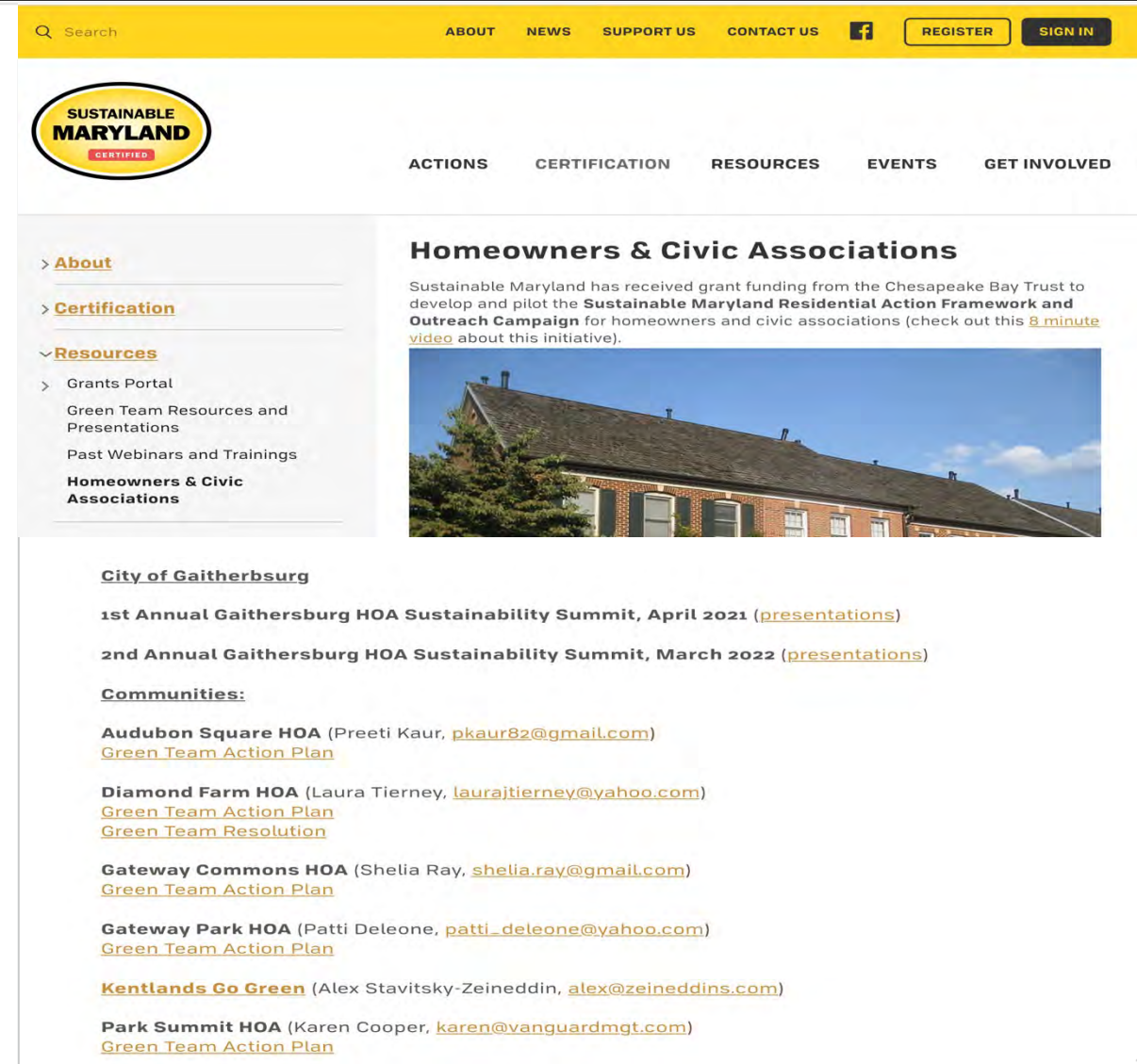
Goals:

- Expand the number of Green Teams in the City each year
- Help HOAs get funding for on-the-ground projects
- Foster regional clusters and partnerships
- Target projects and activities in sub-watersheds
- Hold Annual Sustainability Summit for HOAs and Civic Associations (peer to peer connections and learning)



SM HOA Resource Page & Video

- Check out the HOA Sustainability Resource Page on the SM website
 - Names of HOA Green Teams, with contact details in Gaithersburg and Prince George's County
 - Copies of Sustainability Action Plans
 - Copies of Residential Action Framework template (Action Menu)
 - <https://sustainablemaryland.com/resources/homeowners-associations>



The screenshot shows the Sustainable Maryland website. The top navigation bar is yellow with a search icon and links for ABOUT, NEWS, SUPPORT US, CONTACT US, a Facebook icon, REGISTER, and SIGN IN. Below the navigation bar is the Sustainable Maryland logo, which is a yellow circle with a black border containing the text "SUSTAINABLE MARYLAND" and "CERTIFIED" below it. To the right of the logo are navigation links for ACTIONS, CERTIFICATION, RESOURCES, EVENTS, and GET INVOLVED. The main content area is divided into two columns. The left column has a sidebar with expandable sections: About, Certification, Resources (with sub-links for Grants Portal, Green Team Resources and Presentations, Past Webinars and Trainings, and Homeowners & Civic Associations), and Homeowners & Civic Associations. The right column features a heading "Homeowners & Civic Associations" followed by a paragraph of text and a photograph of a brick house. The text states: "Sustainable Maryland has received grant funding from the Chesapeake Bay Trust to develop and pilot the Sustainable Maryland Residential Action Framework and Outreach Campaign for homeowners and civic associations (check out this 8 minute video about this initiative)." Below the photograph, there is a section titled "City of Gaithersburg" with two sub-sections: "1st Annual Gaithersburg HOA Sustainability Summit, April 2021 (presentations)" and "2nd Annual Gaithersburg HOA Sustainability Summit, March 2022 (presentations)". Underneath is a "Communities:" section listing several HOAs with their contact information and links to their Green Team Action Plans: Audubon Square HOA (Preeti Kaur, pkaur82@gmail.com), Diamond Farm HOA (Laura Tierney, laurajtierney@yahoo.com), Gateway Commons HOA (Shelia Ray, shelia.ray@gmail.com), Gateway Park HOA (Patti Deleone, patti-deleone@yahoo.com), Kentlands Go Green (Alex Stavitsky-Zeineddin, alex@zeineddins.com), and Park Summit HOA (Karen Cooper, karen@vanguardmgt.com).

SM HOA Resource Page & Video

- **Check out the HOA Residential Action Framework Video**

- An 8-minute overview of the HOA Green Team/Action Plan Framework
- An excellent introduction for Board members and property managers

The image shows a YouTube video player interface. At the top left is the YouTube logo, and at the top right is a search bar. The video player itself features a background of yellow flowers. The main title is "Sustainable Maryland's Residential Action Framework" in large, bold, black text. Below the title is the subtitle "ENGAGING MARYLAND'S HOMEOWNERS AND CIVIC ASSOCIATIONS". The video player controls are visible at the bottom, including a play button, a progress bar showing 0:00 / 8:05, and a volume icon. The channel name "Sustainable Maryland" is displayed below the video player, along with a "Subscribe" button and a notification of 6 subscribers. To the right of the channel name are icons for likes (2), dislikes, share, and a menu icon.

SM HOA Green Team Trainings

- **What Training or Resources Does Your Green Team Need to Move Your Priorities Forward?**
 - Sustainable Maryland will be surveying the City's HOA Green Teams and Boards for input
 - Trainings on several topics, in-person and online, will be scheduled in late 2023
 - City staff, local nonprofits, UMD and others will play a role, and support projects that result



Sustainable Maryland Next Steps

- Slides and resources from today's presentation will be shared in the coming days
- SM will continue to work with the City to engage HOAs and Civic Associations to listen, learn, and provide support
- We look forward to getting in touch with you throughout the year!



Stay Connected



ENVIRONMENTAL
FINANCE CENTER

- Contact:
 - Mike Hunninghake
mikeh75@umd.edu
(301) 405-7956
 - Natalia Sanchez
nsanchez@umd.edu
(301) 405-5421
- Visit the Sustainable Maryland Website
 - <https://sustainablemaryland.com/>
- Join the Sustainable Maryland [Mailing List](#)

