

# National Wildlife Federation Community Wildlife Habitat

Empowering communities to create healthy, sustainable, and wildlife-friendly places

June 9, 2021



ENVIRONMENTAL  
FINANCE CENTER



# Presenters



**Emily Preziotti**

Community Wildlife Manager  
National Wildlife Federation



# Agenda

- Why is the **Community Wildlife Habitat** Program Important?
- Taking Action/Getting Started/Getting It Done
- Submission Requirements
- Community Spotlight
- Resources and Tools



# Why is the Community Wildlife Habitat Program Important?

The program empowers communities to take action for wildlife in their own communities by providing a framework to restore wildlife habitat and educate and engage community members while working to attain the esteemed certification as a wildlife-friendly community.



# Why is the Community Wildlife Habitat Program Important?

This action aims to support municipalities in their efforts to protect and enhance wildlife habitat that will ultimately yield

- **Environmental**
- **Economic**
- **Social equity**

benefits for entire communities.



Ann Litrel



# Taking Action/Getting Started/Getting It Done

## Steps to Certify:

1. Register online at [www.nwf.org/community](http://www.nwf.org/community)
2. Set up your community's online profile
3. Earn points! (Certification Points & Education and Outreach Points)
4. Apply for and receive Community Wildlife Habitat certification.
5. Continue to educate and engage the community and certify habitats by meeting modest annual re-certification goals.



# Taking Action/Getting Started/Getting It Done

## Making Your Team:

- ✓ A team leader (municipal staff, green team members, or other community representatives)
- ✓ Additional 2-5 team members

Engage with residents throughout your community through the project!



Mary Langenau



# Taking Action/Getting Started/Getting It Done

## Timeframe, Project Costs, and Resource Needs:

- On average, it takes roughly 2 years to certify
- One-time program fee (\$99)
- Property certification fee (usually paid for by individual property owners - \$20)
- Other initial project costs may include:
  - Staff and committee time to conduct outreach to residents and property owners.
  - Hiring a consultant for grant writing and planning
  - Construction and maintenance of wildlife





# Taking Action/Getting Started/Getting It Done

## Additional Guidance/Tips:

- Ensure you have a supportive team
- Engage with partner or like-minded organizations (e.g., garden groups, master naturalists, schools and clubs)
- Utilize well-visited places and popular media to get your message out
- Garner support from city officials



# Submission Requirements - STEPS

- ✓ Register in the Community Wildlife Habitat program
- ✓ Take action to earn certification and track progress on NWF website
- ✓ Certify and maintain your certification each year
- ✓ Clearly demonstrate how the municipality is actively supporting these efforts. Municipalities can actively support this action by doing one or more of the following:
  - Designate a budget or on-going funding
  - Coordinate events
  - Promote events and program
  - Provide office or meeting space
  - Implement a wildlife habitat project on municipal property



# Submission Requirements - DOCUMENTATION

**1. Description of implementation:** In the text box, please provide a short narrative (300 word max) that describes the action. You should include the following information: a brief history of how and when the project was started and implemented, key actors and partners, the benefits and challenges, and what direct support the municipality provided.



# Submission Requirements - DOCUMENTATION

## 2. **Supporting documentation:** Upload the following documents:

- Community Wildlife Habitat Application
- A copy of your certification certificate
- Photos of municipal habitat projects
- A link to your town's Community Wildlife Habitat customized home page.
- **At least TWO** of any of the following promotional materials:
  - Newspaper articles and municipal newsletters that promote the program
  - Website or social media screenshots
  - Outreach materials
  - Educational program materials



# Community Spotlights



**Bowie, MD**  
Certified since 2017

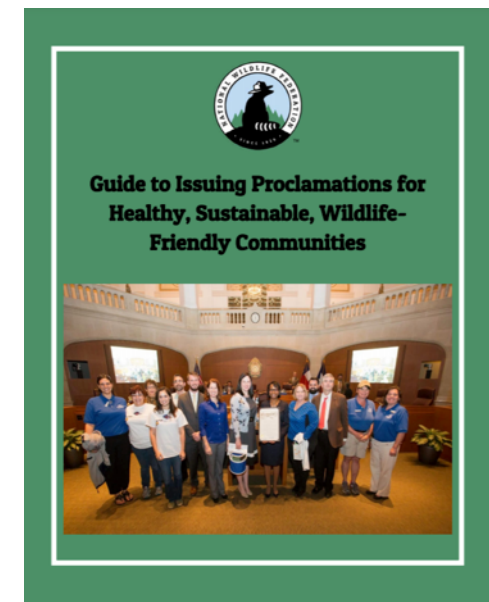
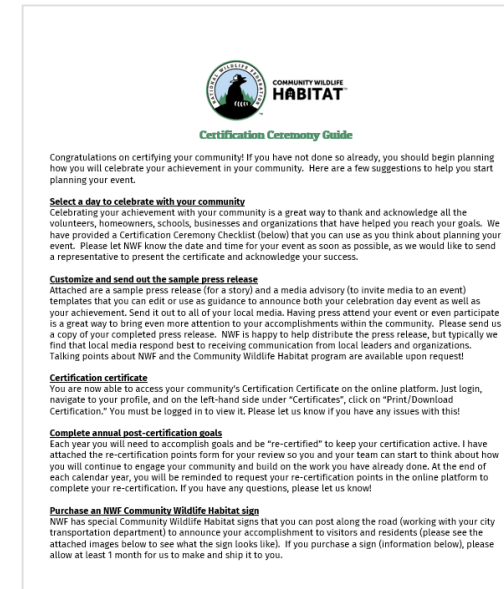
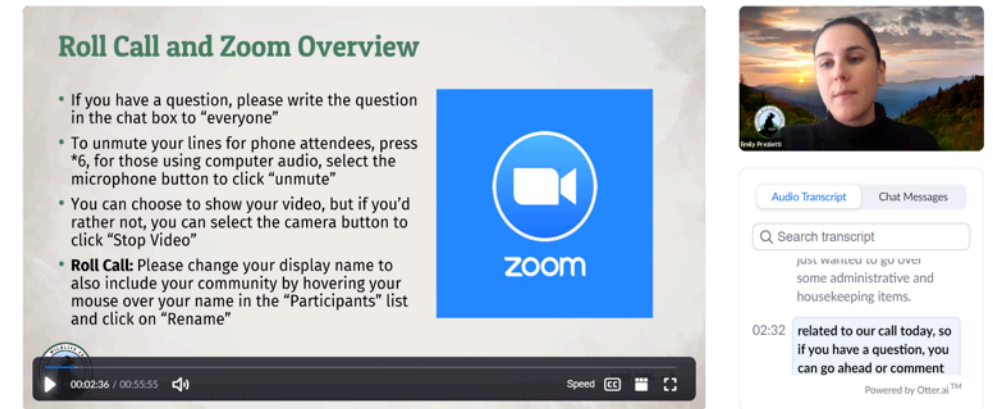


**Baltimore, MD**  
Certified since 2018



# Resources and Tools

- Visit our website!  
<https://www.nwf.org/CommunityWildlifeHabitat/>
- Once registered, NWF provides support by:
  - Hosting and facilitating network-wide webinars to share tips and best practices
  - Providing access to useful resources (e.g., case studies, templates, how-to guides)
  - Supplying communities with tip sheets and educational materials
  - Connecting your community with resources, technical experts, and other communities



# Questions?

Emily Preziotti, Community Wildlife  
Manager

[community@nwf.org](mailto:community@nwf.org)

202-797-6618

